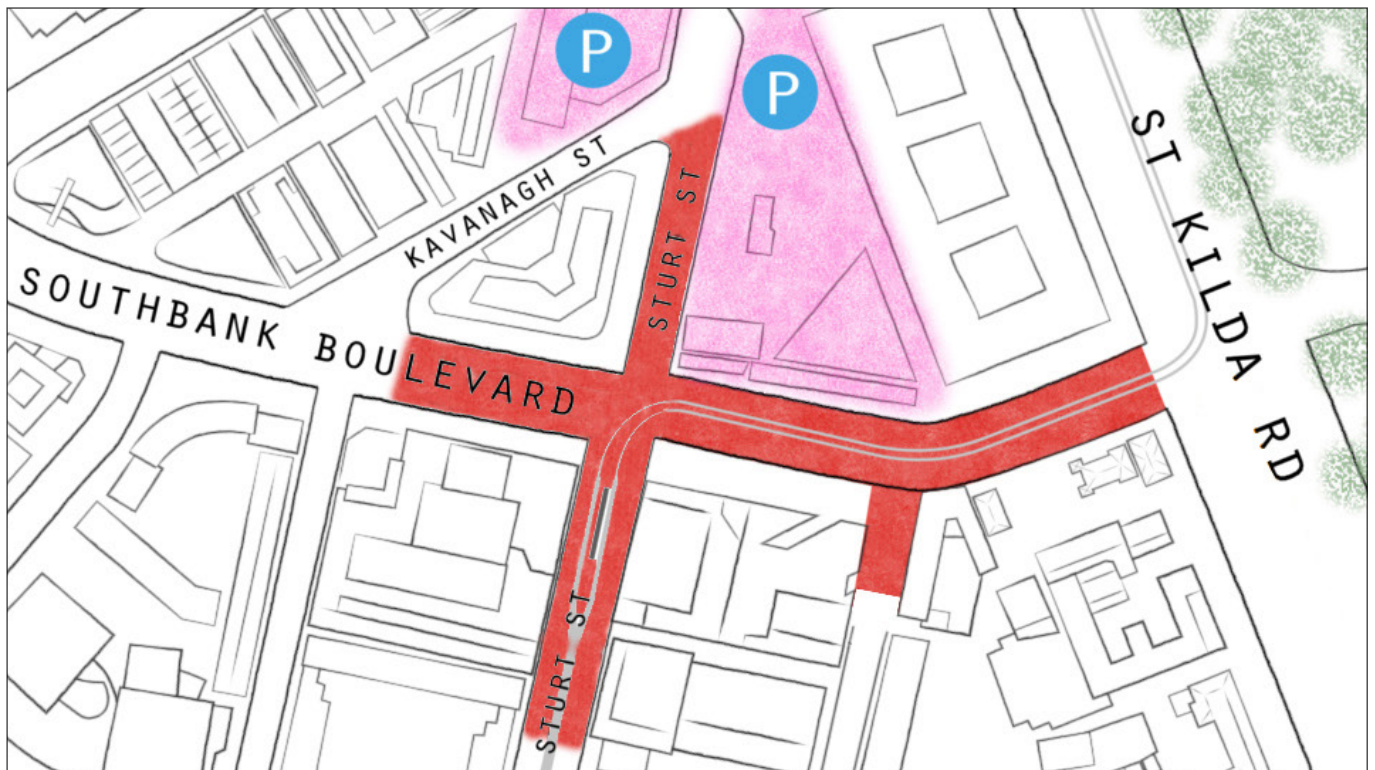


# TRANSFORMING SOUTHBANK BOULEVARD AND DODDS STREET

## CONSTRUCTION BULLETIN 5 - ADVISORY

### MAJOR TRAM WORKS & ROAD CLOSURES



### ROAD CLOSURES

15-22 September

On September 15, Sturt Street, between Grant Street and Kavanagh Street, will be closed to all traffic in preparation for major tram works.

Sturt Street will be re-opened to traffic on 1 October 2018. The Route 1 tram will continue to operate during this period.

22-30 September

Major tram works will commence early in the morning on 22 September 2018. The Route 1 Tram will be diverted during this period. Replacement buses will operate in this section of Southbank Boulevard and Sturt Street.

To plan your journey, please visit [www.ptv.vic.gov.au/journey](http://www.ptv.vic.gov.au/journey)

### PEDESTRIAN ACCESS

Pedestrian access will be significantly affected during this period. Please review the pedestrian plan on the next page for detailed information and walk-arounds.

### Upcoming works



#### FOOTPATH & TRAFFIC LANE CLOSURES

Further footpath and lane closures on Southbank Boulevard and Sturt Street to allow for tram works to commence.



#### INITIAL STURT STREET CLOSURE

Commencing 15 September, Sturt Street will be closed between the Melbourne Recital Centre and Kavanagh Street.



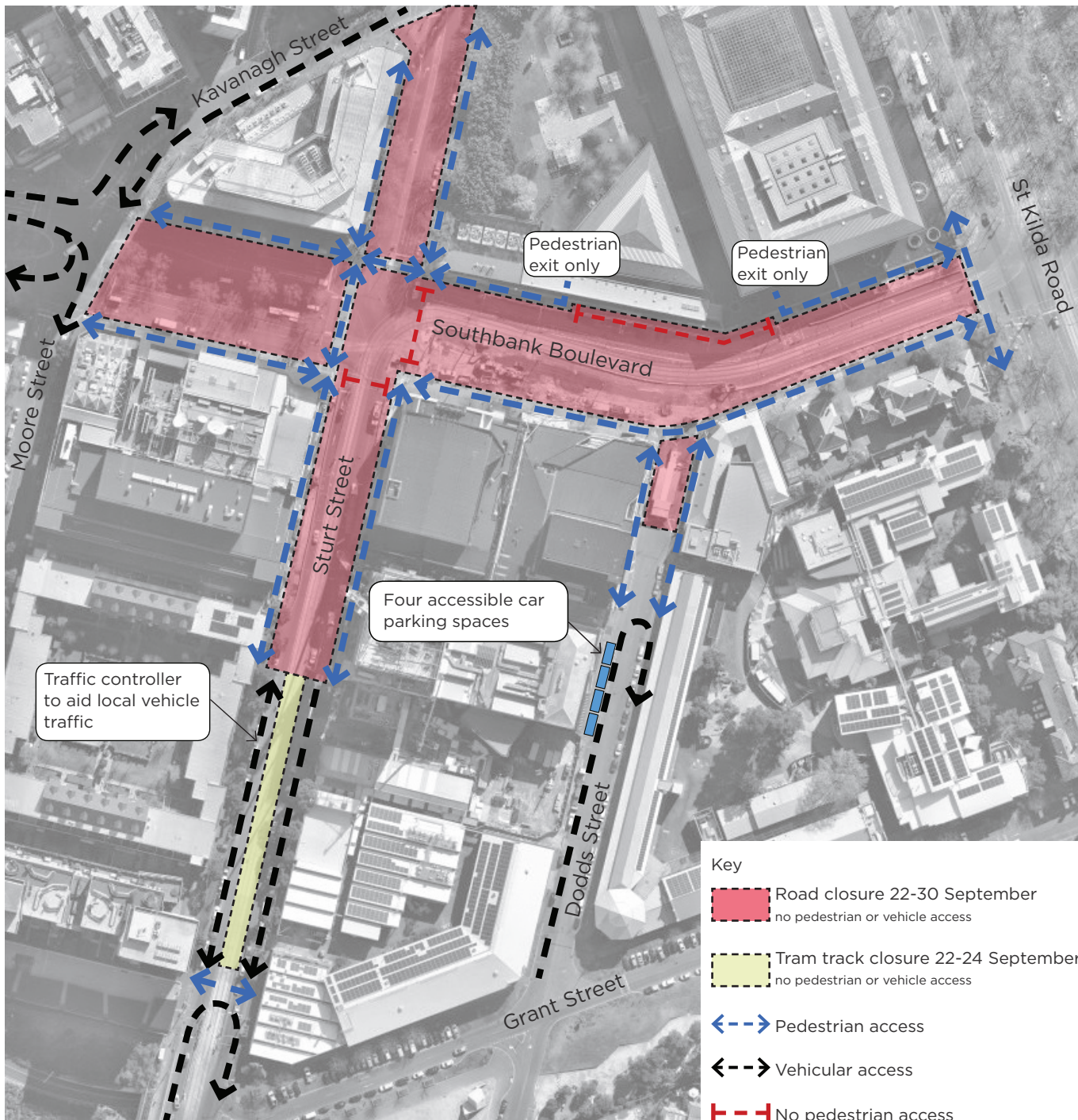
#### MAJOR TRAM WORKS PERIOD

Full road closure, demolition of existing tram infrastructure, construction and recommissioning of new tram line and tram stop on Sturt Street.



# TRANSFORMING SOUTHBANK BOULEVARD AND DODDS STREET

## PEDESTRIAN ACCESS



## Thank you for your patience

These works will cause disruption. We apologise for the inconvenience and thank you for your patience. To find out more, please contact **9658 9658**, or view our construction animation at [youtu.be/8Is7n6rcbK0](https://youtu.be/8Is7n6rcbK0)

email [southbankboulevard@melbourne.vic.gov.au](mailto:southbankboulevard@melbourne.vic.gov.au),

[melbourne.vic.gov.au/southbankboulevard](https://melbourne.vic.gov.au/southbankboulevard)

