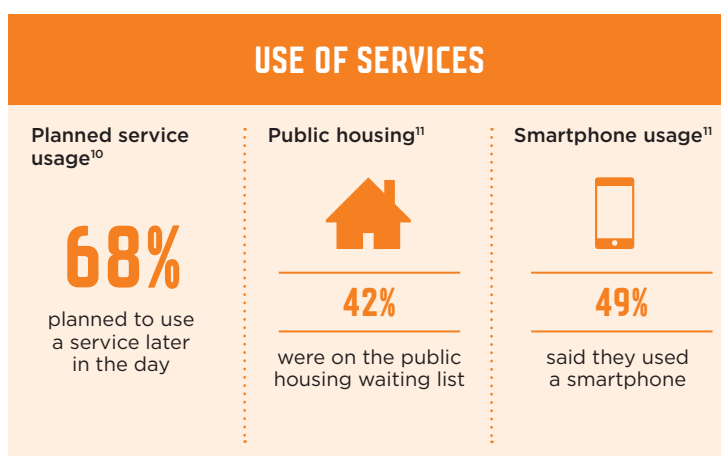
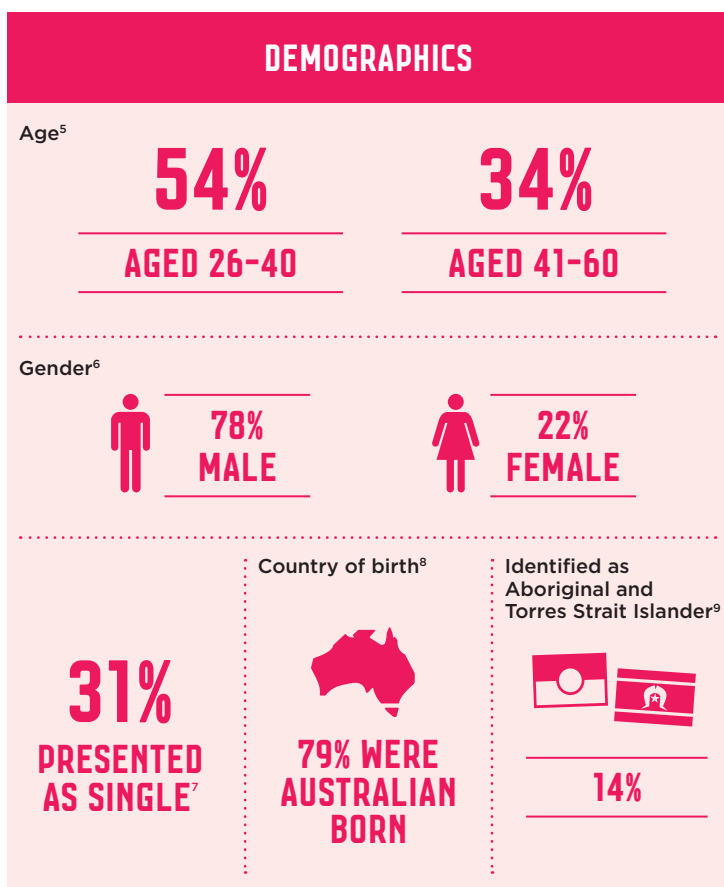
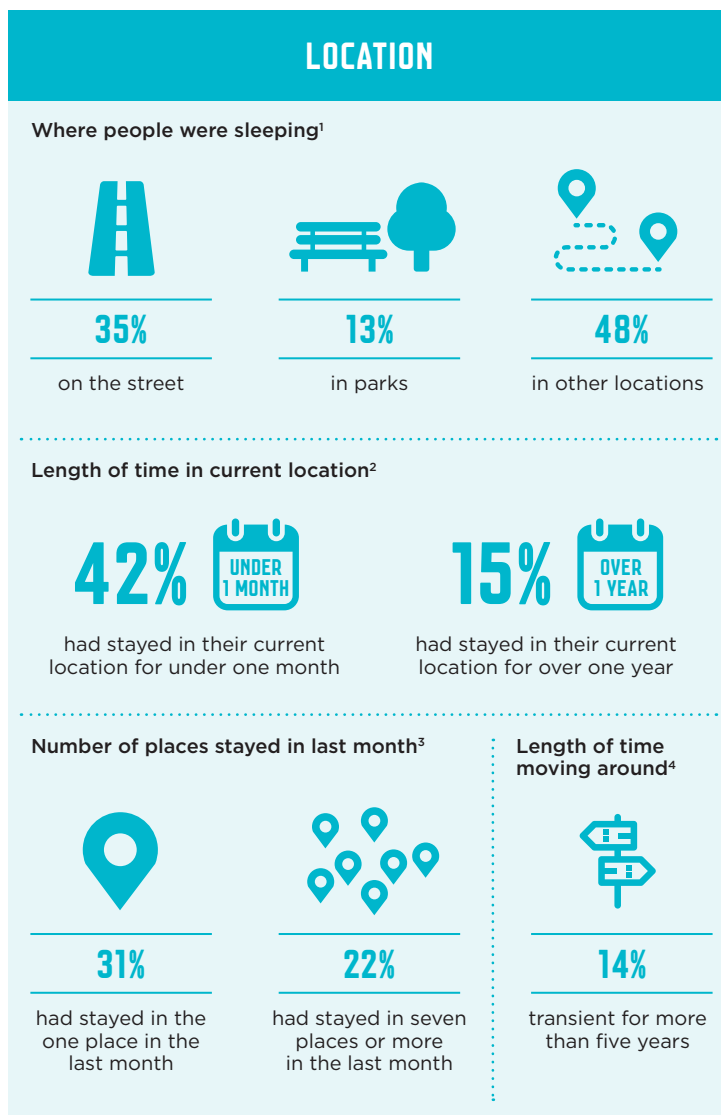
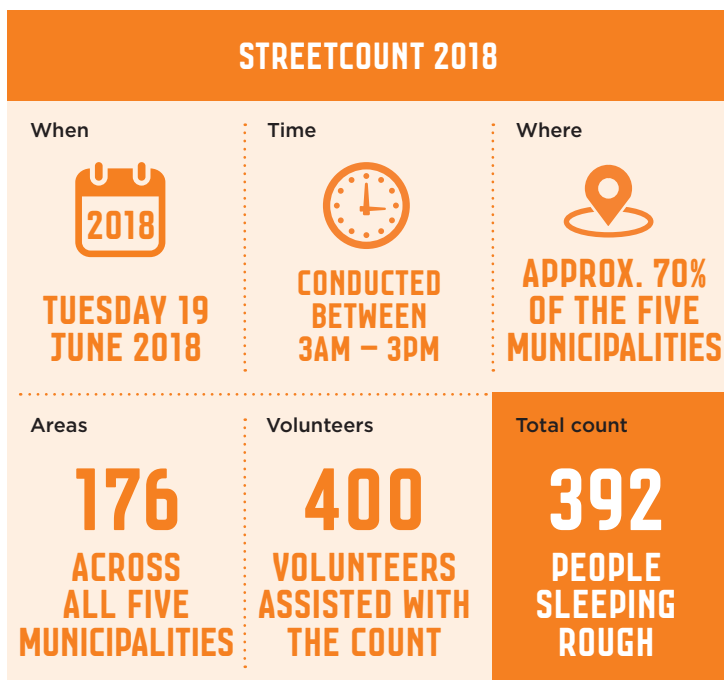


# STREETCOUNT 2018: A SNAPSHOT OF PEOPLE LIVING ROUGH

Five Inner Melbourne  
Municipalities

StreetCount 2018 aims to continue to develop an understanding of rough sleeping in Melbourne. This was the first joint count of people sleeping rough in the Cities of Melbourne, Maribyrnong, Yarra, Stonnington and Port Phillip. Thank you to the many volunteers and partner organisations who assisted in StreetCount 2018.



Inner Melbourne Action Plan  
Making Melbourne More Liveable



Population numbers varied to each survey question. Population sizes for reference numbers: <sup>1</sup>(392), <sup>2</sup>(109), <sup>3</sup>(100), <sup>4</sup>(101), <sup>5</sup>(283), <sup>6</sup>(301), <sup>7</sup>(374), <sup>8</sup>(113), <sup>9</sup>(112), <sup>10</sup>(112), <sup>11</sup>(109).