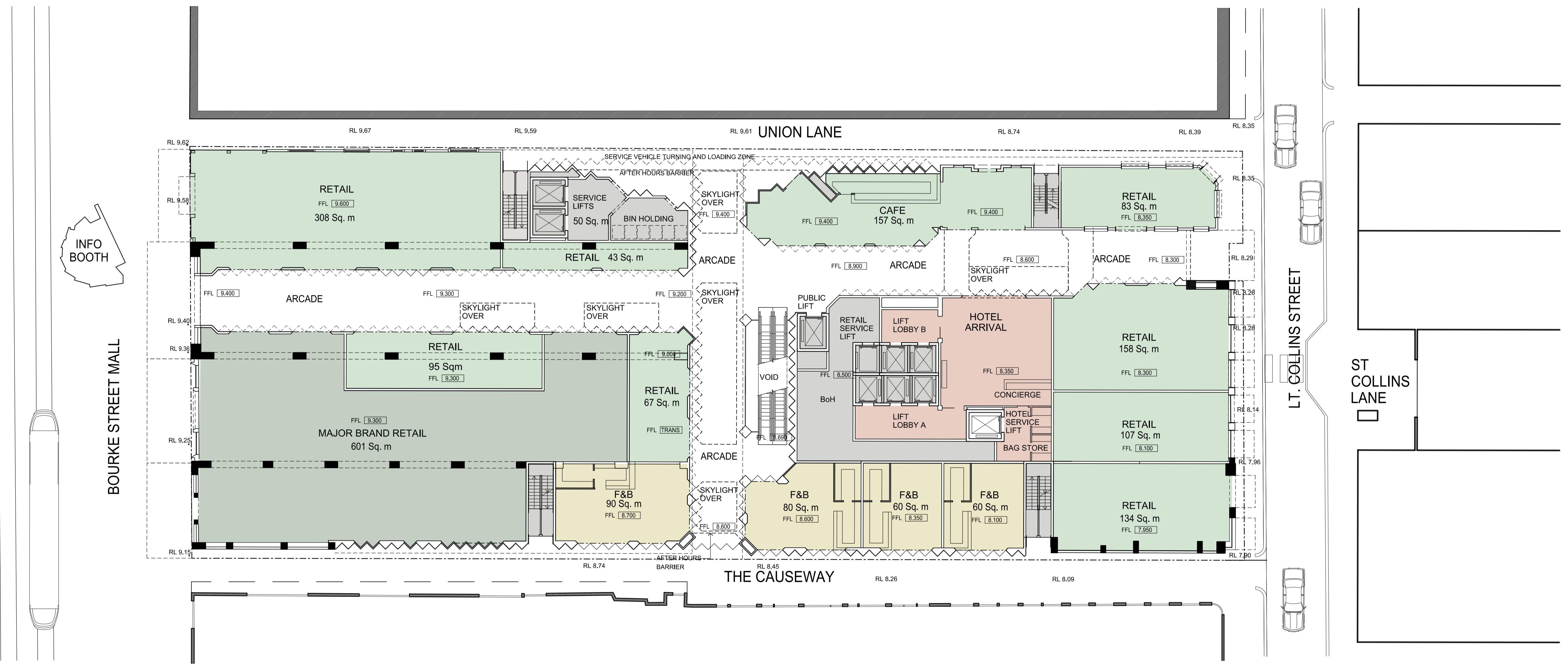
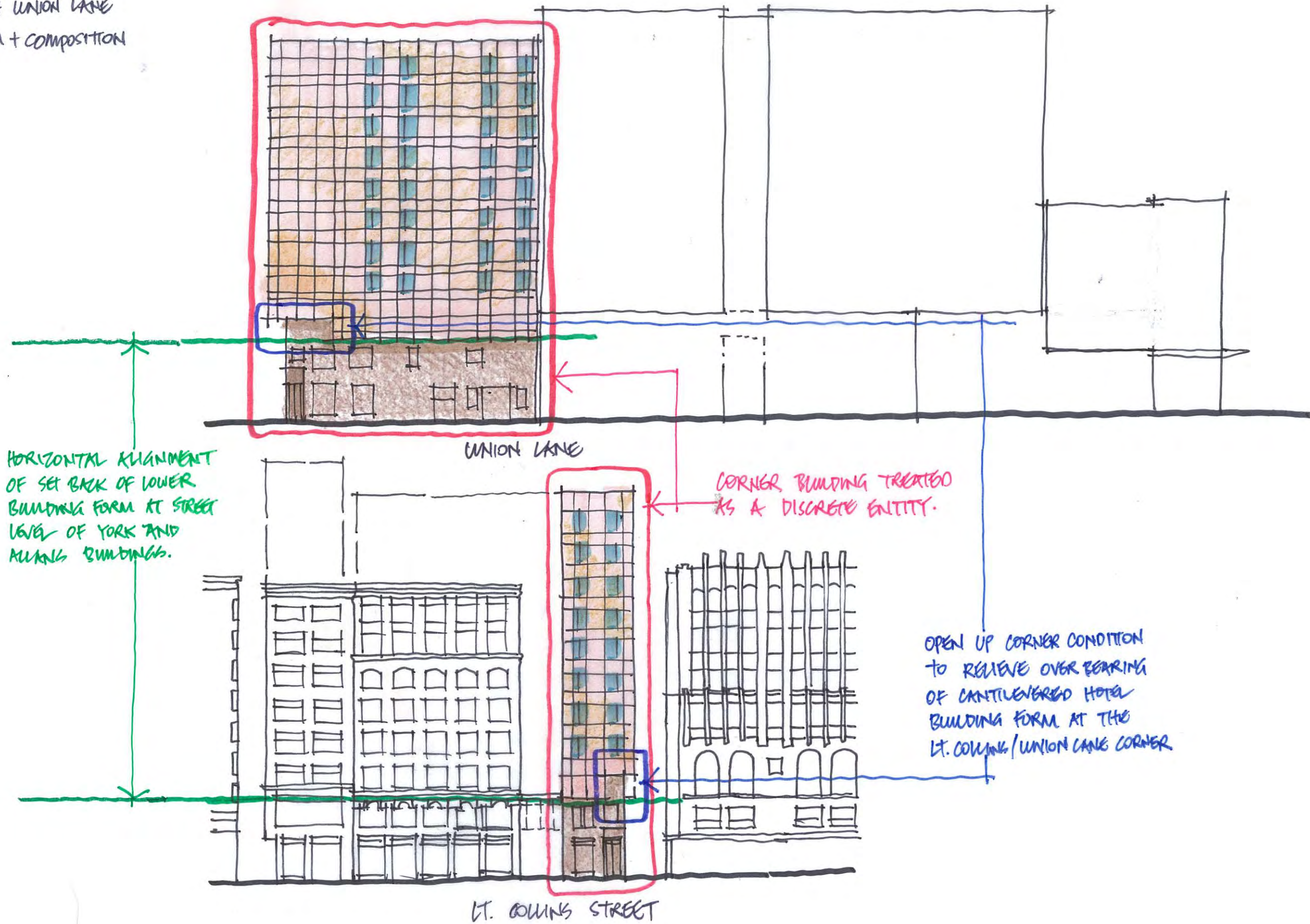
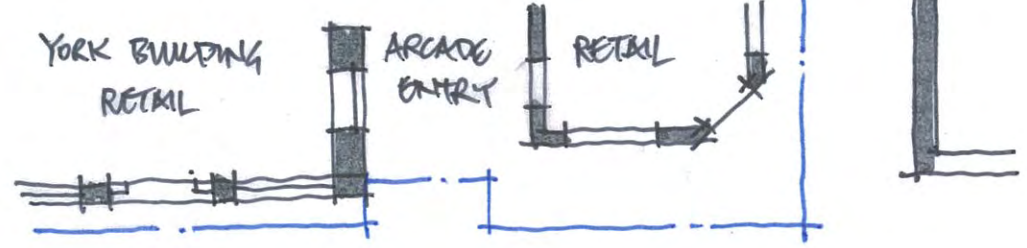
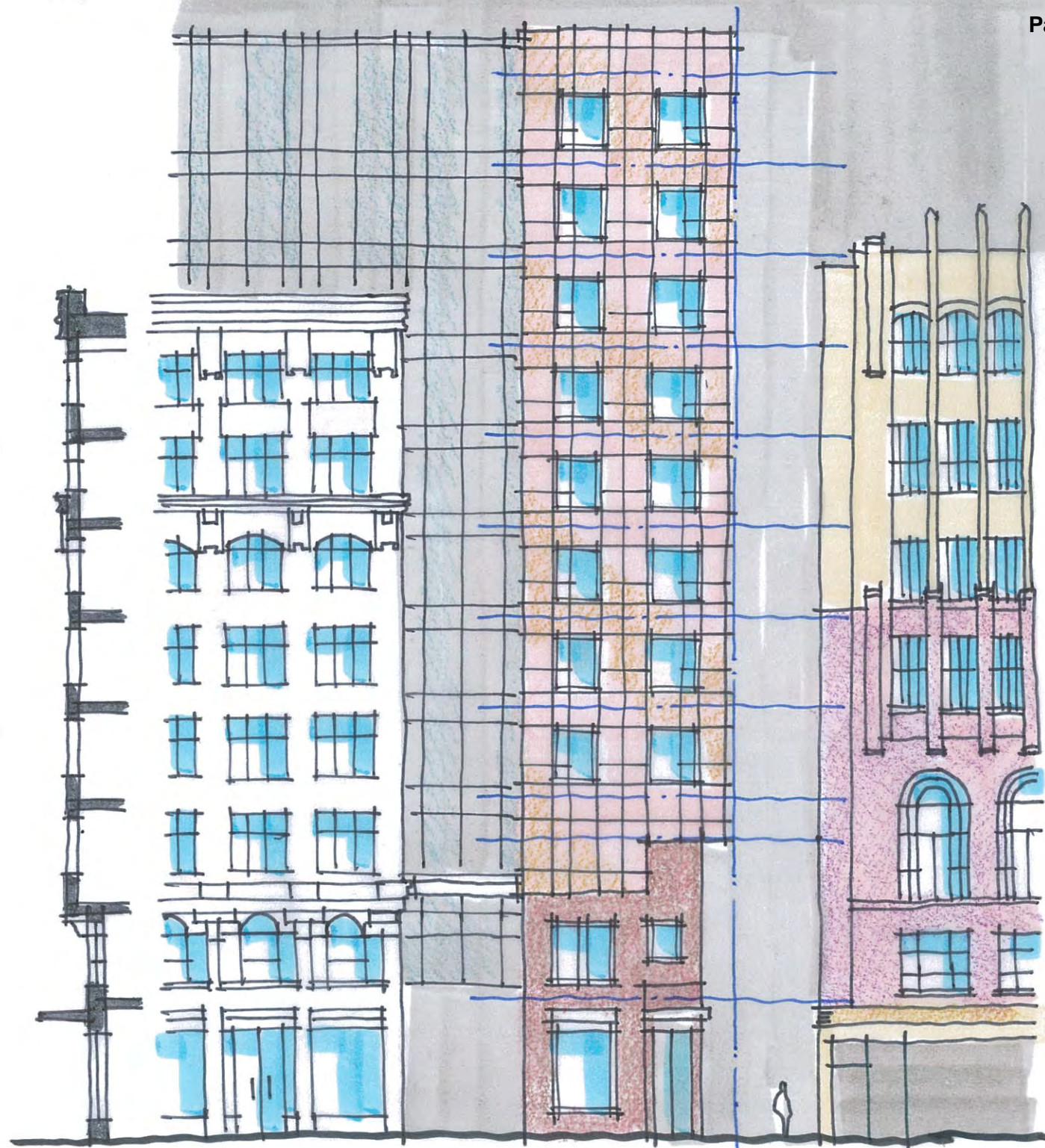


# Discussion Sketches (August 2018)

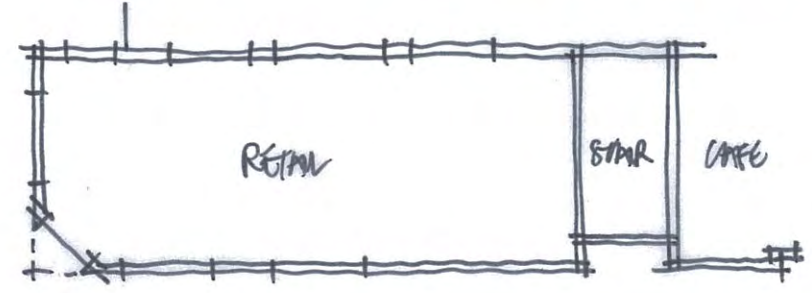
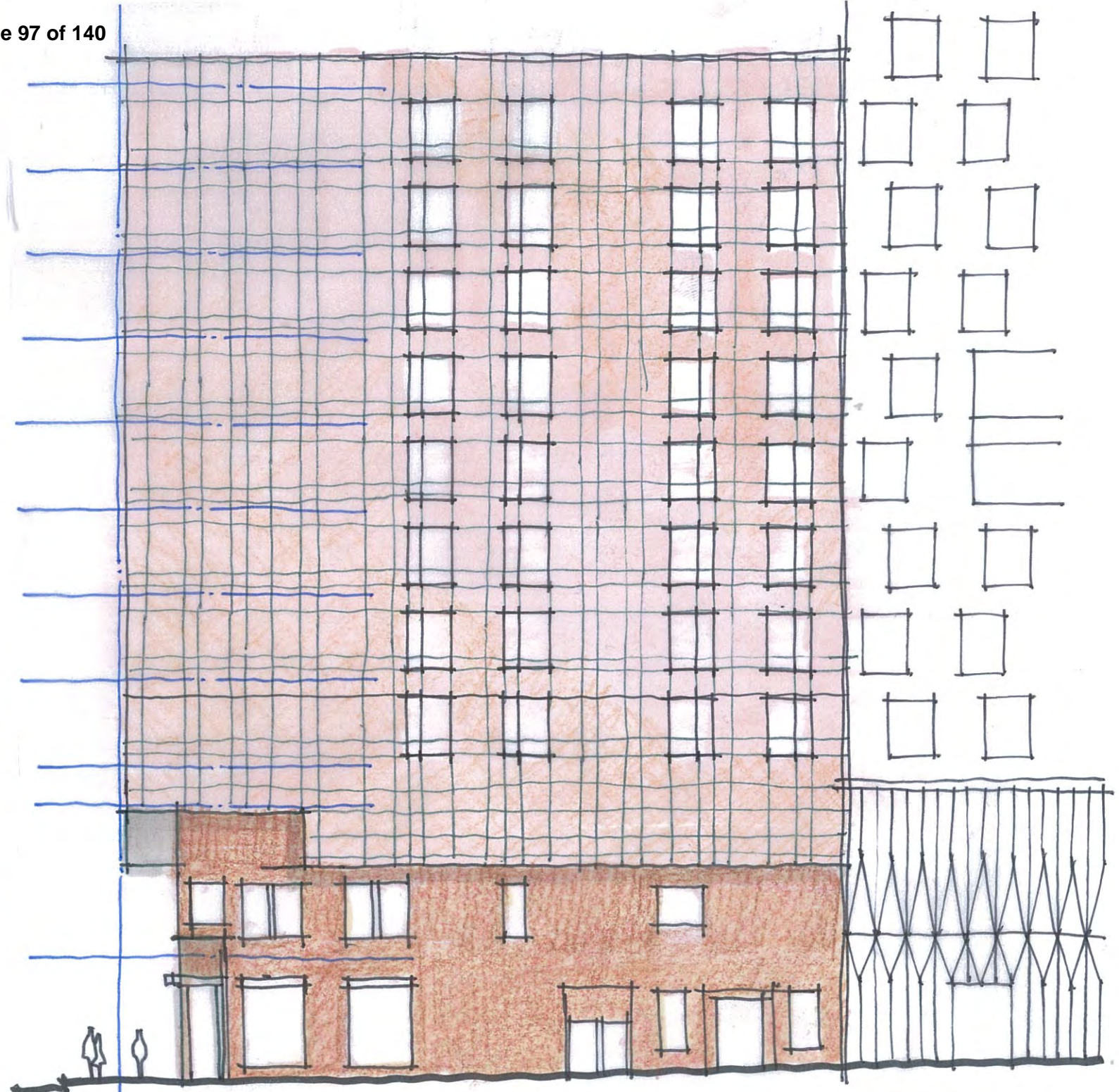


CORNER BUILDING  
LT. COLLINS ST + UNION LANE  
BUILDING FORM + COMPOSITION





LT. COLLINS ST. ELEVATION

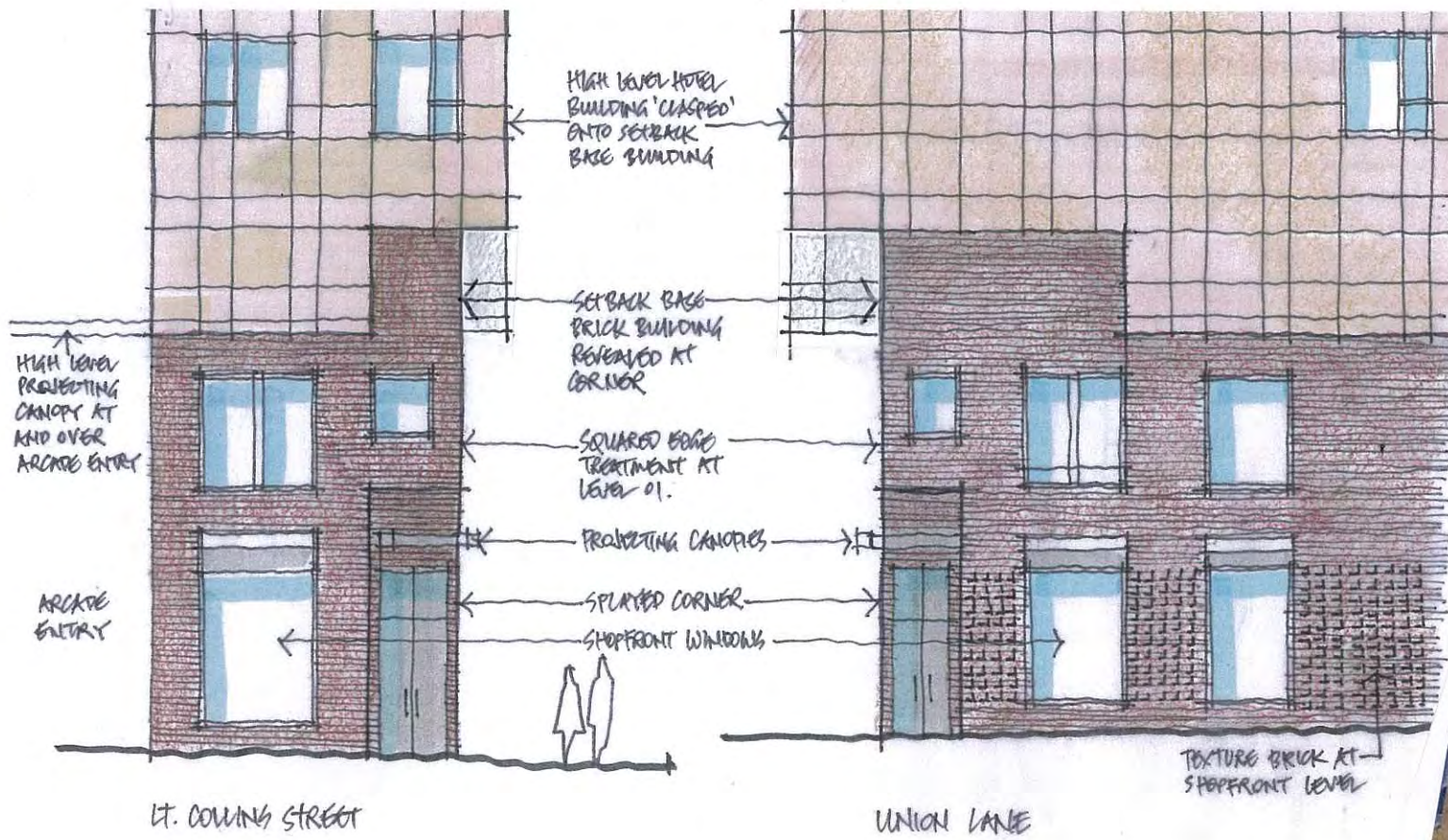


UNION ELEVATION

CORNER BUILDING  
COMPOSITION

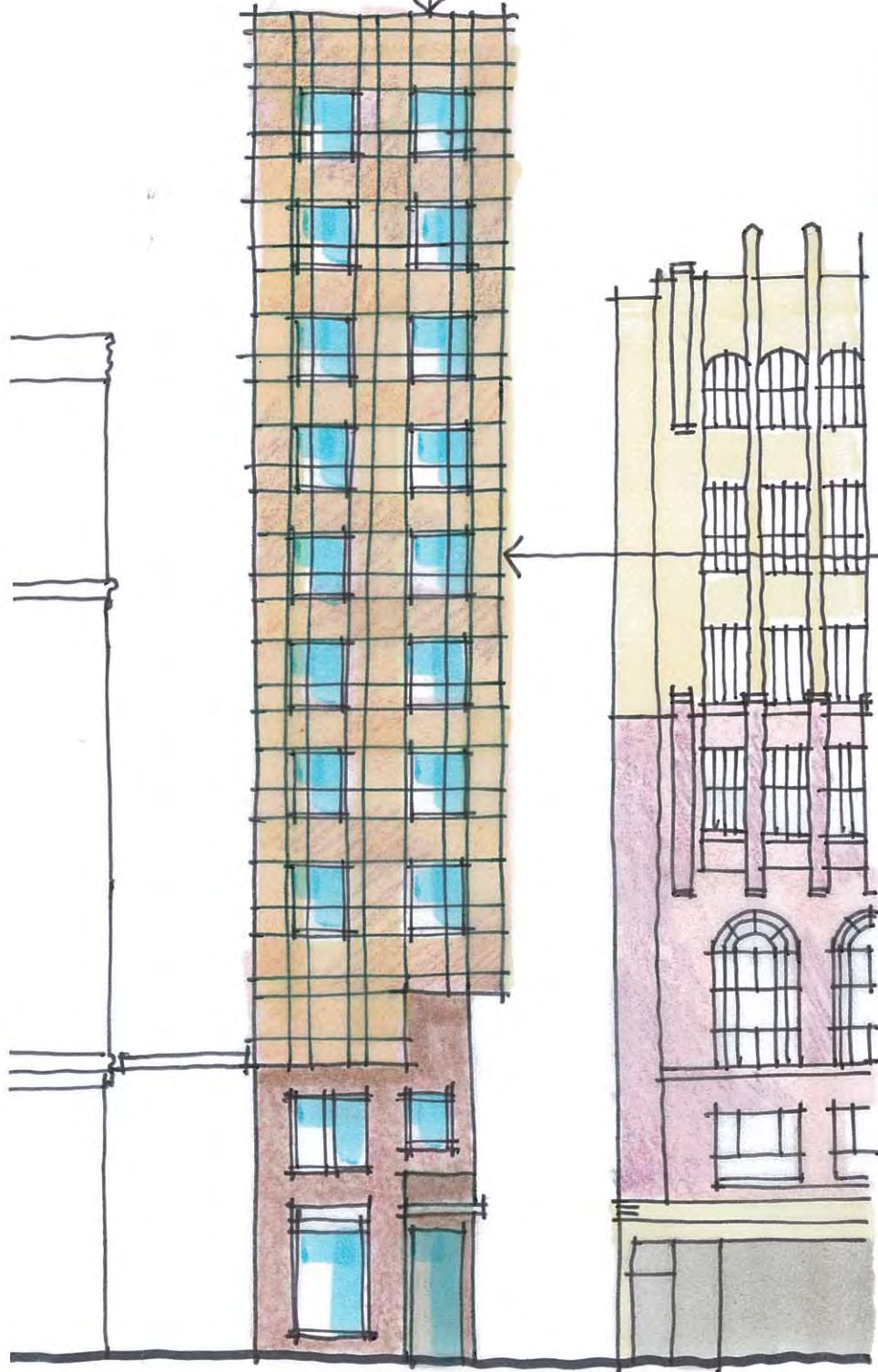
REFERENCE IMAGE Page 98 of 140  
PORTER HOUSE N.Y.  
SHOP ARCHITECTS.

NEW BUILDING FORM 'CLASPED'  
ONTO EXISTING BRICK STRUCTURE.  
CLADDING OF NEW BUILDING  
CONSISTENT TO ALL FACADES AND  
SOFFIT REINFORCING IDEA OF  
NEW ATTACHING ITSELF TO OLD.



HOTEL TOWER CLADDING + FACADE

COPPER/BRONZE PANELLED  
FACADE CLADDING



UPPER LEVELS BUILDING FORM  
COMPOSED AS A PLAIN FORM  
CLAD IN PINK/BRONZE COPPER  
COLOURED METALLIC PANELLING,  
SYMPATHETIC TO AND COMPLEMENTING  
THE DISTINCTIVE PURPLE/PINK  
TERRAZZOTA TILED FACADE OF THE  
ADJACENT DAVID JONES (FORMER  
COLES) BUILDING.



LT. COLLINS STREET DAVID JONES STORE (FORMER COLES BUILDING) FACADE

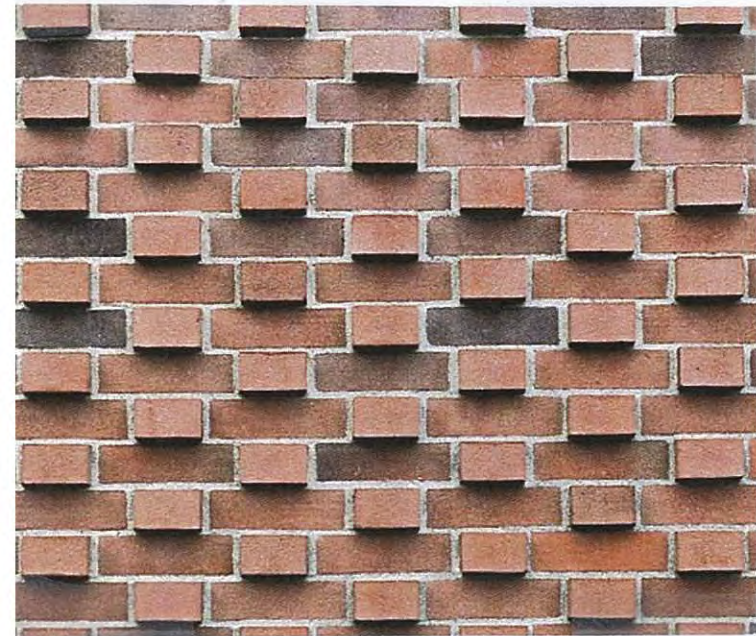


STREET LEVEL BASE BUILDING



Page 100 of 140

SHOPFRONTS AND UPPER LEVEL WINDOWS EXPRESSED AS INSERTIONS IN BRICK WALL WITH STRONGLY EXPRESSED FRAMES.



RETAINED RED BRICK TO STREET LEVEL BUILDING REFERENCING EXISTING BOOK BUILDING 'TEXTURED' BRICK PATTERN AT LOWER LEVEL WALL

LOWER SECTION OF BOOK BUILDING EXISTING CONDITION.

