

Context plan



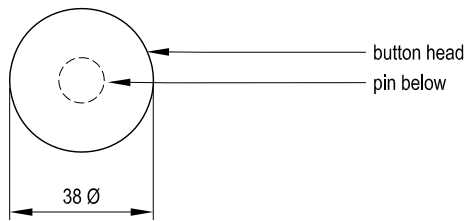
Skate deterrent buttons are used along the edges of low walls, seat walls and some kerbs to deter skate activity. They are used in areas where passive skate deterrent measures such as roughened surface treatments have not been implemented.

Skate buttons are generally installed in rows or in a single line and are positioned at a maximum of 750mm centres.

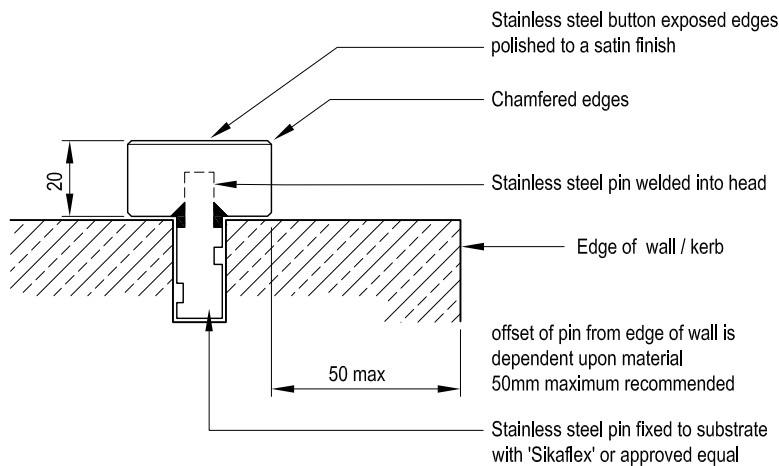
Care should be taken in determining the appropriate off-set of the skate deterrent button from the edge of the seat or wall to prevent cracking or damage of the substrate material during installation.

The skate deterrent button is fabricated from 316 grade satin polished stainless steel.

For fabrication & installation drawings, refer to City of Melbourne, City Design drawings; Project No: 900999_F06-button-Stainless Steel skate stops



Plan



Section