

RENEWABLE ENERGY FOR MELBOURNE



CITY OF MELBOURNE

ZERO NET EMISSIONS

We're boosting renewable energy to decarbonise Melbourne's electricity supply.

OUR 2018 TARGET:

25% OF MELBOURNE'S
ELECTRICITY FROM
RENEWABLE ENERGY.

KEY NUMBERS

2012-13



3,799,663 MWH

of electricity consumed
in Melbourne each year.

2018

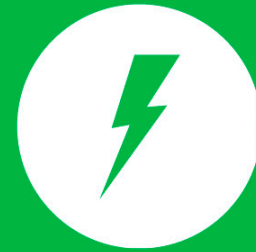


5,200,000 MWH

predicted electricity
consumed in Melbourne
each year.

BY 2018

25%
RENEWABLE
ENERGY



1,300,000 MWH

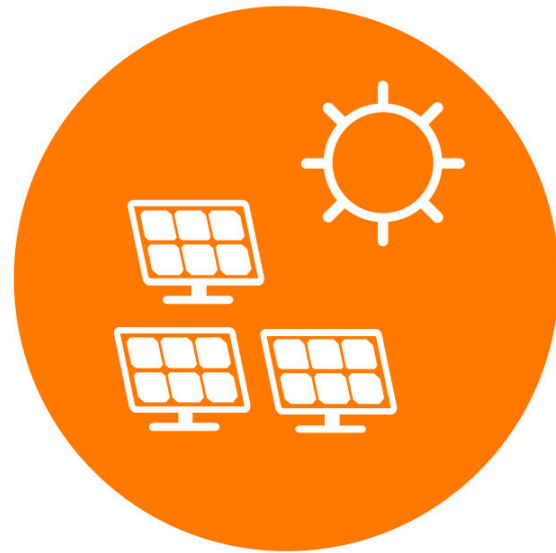
worth of renewable energy
generating capacity will
need to be installed by 2018.

HOW MUCH IS THAT?



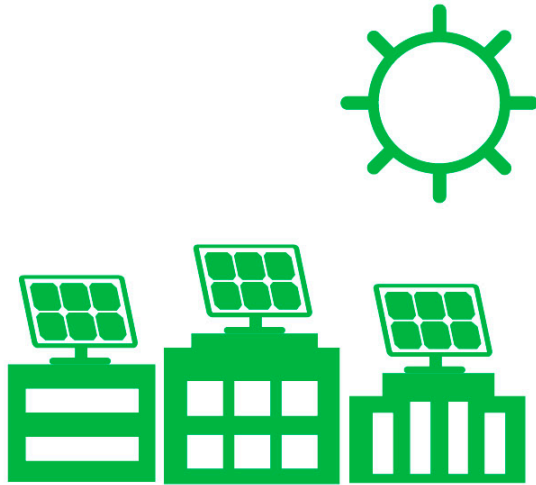
1,300,000 MWH

=



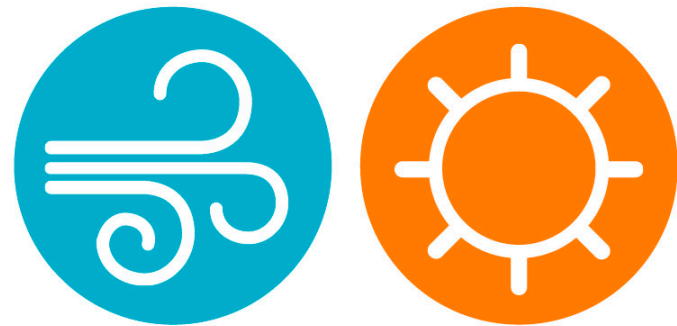
720 MW OF SOLAR PV

CAN WE DO IT ON OUR ROOFTOPS?



20 MW OF RENEWABLE ENERGY

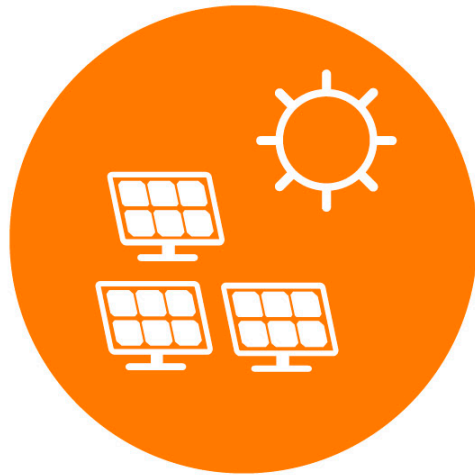
generating capacity could be installed
on Melbourne's commercial rooftops.



BUT THIS IS A SMALL FRACTION OF WHAT'S REQUIRED

most of our renewable energy will need
to come from large-scale wind, or solar
installations upstream.

OUTSIDE OF MELBOURNE



700 MW OF SOLAR PV

7 x AGL's Broken Hill
100 MW Solar Farms.

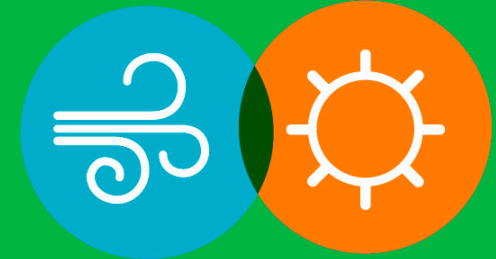
OR



520 MW OF WIND TURBINES

1.25 x MacArthur Windfarms.

MIXED GENERATION



390 MW

180 MW

390 MW of wind and 180 MW of solar will achieve this target and provide a more even generation profile with potential production peaks during the morning, midday, and afternoon - better matching demand.

IT'S ACHIEVABLE

34%

OF GOOGLE'S ENERGY
IN 2013 WAS FROM
RENEWABLE SOURCES.

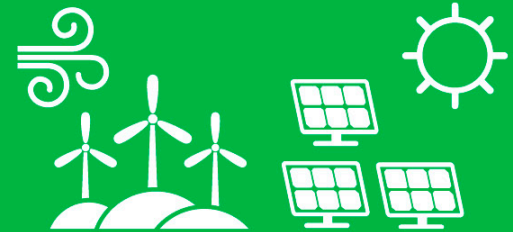


Google consumed more than 2 million MWh in 2010, roughly equivalent to ½ Melbourne's usage.

IF A COMPANY
LIKE GOOGLE
CAN ACHIEVE IT,
SO CAN
MELBOURNE

25%

RENEWABLE ENERGY
TARGET.



Melbourne is a global sustainability leader with the support of a forward looking and innovative business community.

BENEFITS OF GOING SOLAR

- Combat rising electricity costs and bill shock. Create long term electricity price certainty
- Meet environmental expectations with renewable energy
- Differentiate your business and enhance your reputation.
 - **Be a Solar Leader**
- Tell your solar story with City of Melbourne's support



Victorian Electricity Annual Charges



*Essential Services Commission, Electricity Standing Offer, Jemena – small business single rate, annual charges (original \$) 2006-2013

Victorian Electricity Tariff Charges



*Essential Services Commission, Electricity Standing Offer, Jemena – small business single rate, retail tariff, peak tariff (c/kWh) Block 1, 2006-2013

COMMERCIAL SOLAR REBATES

City of Melbourne Objective

- Collect information to better understand, beyond our current knowledge, drivers and barriers for commercial solar and to help further refine the Commercial Solar Service Delivery Model
- Increase the uptake of commercial solar power in the City of Melbourne to meet our 25% Renewable Energy Target



COMMERCIAL SOLAR REBATES

The Offer

System Size	Quantity	Rebate amount	Spend
30 kW+	4	\$4,000	\$16,000
20 – 29.99 kW	6	\$3,000	\$18,000
10 - 19.99 kW	8	\$2,000	\$16,000
Total	18		\$50,000



Example: Program Partner Solar PV Assessment

Building Summary

- + Single storey
- + Commercial office with warehouse

Solar PV

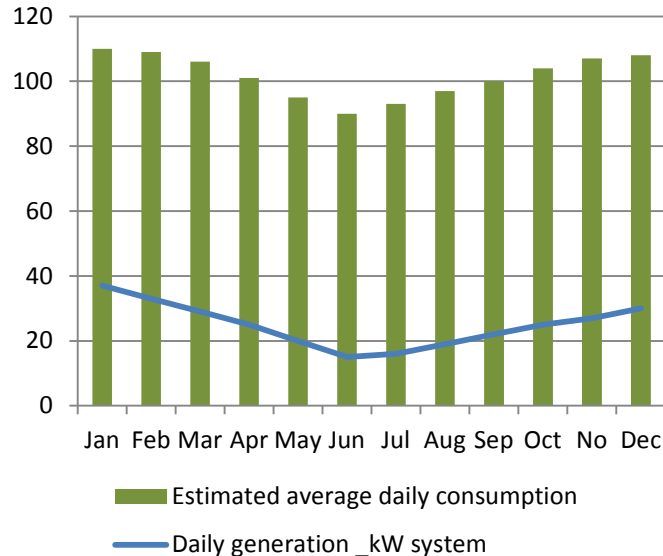
System Size	__ kW system - __ x 250W panels
Annual system output	7986 kWh's per annum
System Cost	\$ X
Estimated Cost Savings p/a	\$ X

System Performance Estimate

JAN	FEB	MAR	APR	MAY	JUN	JUL	AUG	SEP	OCT	NOV	DEC
37	33	29	25	20	15	16	19	22	25	27	30

* Measured in kWh's

Electricity Consumption & Solar Generation



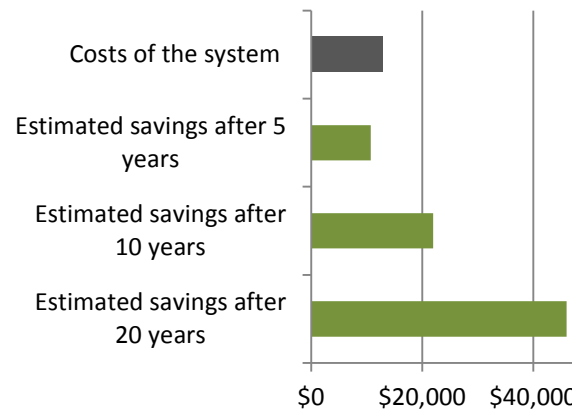
Estimated Payback Period

It is estimated that that a solar __kW system installed at this address will pay itself back in __ years. Estimated savings are \$_____ after 10 years.

Placement

Orientation	North - 345 degrees
Tilt	Pitch 20-30 degrees

Financial Savings



HOW TO APPLY

APPLY NOW

1. Contact the City of Melbourne to register your interest and arrange the initial meeting

Contact person: Russell French

Email: solar@melbourne.vic.gov.au

Phone: 9658 7317

2. Work with the City of Melbourne to identify what solar system makes sense for your building
3. Secure a quote from a reputable solar retailer
4. Select and arrange payment for your chosen system – we can help you identify the best deal
5. Complete the City of Melbourne solar rebate application form
– Rebate expires 31st August 2015 so get in quick!



ADDITIONAL INCENTIVES



Accelerated depreciation – Federal Government

- All small businesses will get an immediate tax deduction for any individual assets they buy costing less than \$20,000. (Currently, the threshold sits at \$1,000)*.

Tax discount for unincorporated businesses – Federal Government

- The Government will also provide a 5 per cent tax discount to unincorporated businesses with annual turnover less than \$2 million from 1 July 2015*.

Small-scale Renewable Energy Scheme – Federal Government

- Eligible small-scale renewable energy systems are entitled to a number of small-scale technology certificates (STCs).
 - A 10kW solar system is entitled to a \$6726 rebate at today's trading rate per STC*

*Conditions apply. Refer to government, clean energy regulator web sites for more information and speak to your accountant for professional advice.



**CITY OF
MELBOURNE**

Now Is The Time To Go Solar. City of Melbourne Your Expert Solar Partner

Contact us to find out how you can improve your businesses position by going solar.

Russell French - solar@melbourne.vic.gov.au

9658 7317

Use **#SolarMelb** on Facebook or Twitter to share info and stories.

Twitter @Ecocityforum 

Facebook @Ecocityforum 

www.melbourne.vic.gov.au/solar

