

Report to the Future Melbourne Committee

Agenda item 6.2

Community Grants and Partnerships Framework 2022-25

6 September 2022

Presenter: Rushda Halith, Director Community Development

Purpose and background

1. The purpose of this report is to seek Council endorsement of the Community Grants and Partnerships Framework 2022-25 (refer Attachment 2).
2. In September 2018, Council endorsed the Community Grants and Partnerships Framework (the Framework), which outlines how Council provides grants to not-for-profit organisations or social enterprises whose work delivers social outcomes in line with Council goals.
3. A review of the grants program was completed in early 2022 to ensure alignment with the Council Plan 2021-25, Inclusive Melbourne Strategy and Neighbourhood Model.
4. The review identified opportunities for the grants program to create greater impact for community. Recommendations included streamlining funding allocations, improving the applicant experience and encouraging greater diversity of applicants, and being more flexible and responsive to community needs.

Key issues

5. The 2022-25 Framework has been developed to reflect the findings from the review. Key changes (see Attachment 3 for details) include:
 - 5.1. placement of the grants program in Council's strategic context, including clear alignment of program outcomes with the Inclusive Melbourne Strategy and the Neighbourhood Model, to support more effective outcome measurement
 - 5.2. realignment of funds under the Framework to support the new Connected Neighbourhood Grants (\$100,000, as endorsed by Council alongside the Neighbourhood Planning Framework at the Future Melbourne Committee on 14 June 2022) and Community Events Grants (\$50,000 received annually from the Event Partnership Program funding stream due to its recently-confirmed focus on larger, more commercial events)
 - 5.3. combined budget line of \$1.35 million annually for Operational Support Grants (grants up to \$2,000 per year for two years), Community Inclusion Grants (grants up to \$20,000) and Social Investment Partnerships (grants \$25,000-80,000 per year for two years) to provide flexibility to align full portfolio with opportunities for greatest impact
 - 5.4. increased frequency of grant rounds in multiple funding streams to provide greater flexibility to applicants
 - 5.5. simplified assessment and communication processes for smaller grants, proportionate with their scale, to improve responsiveness to applicants, including for:
 - 5.5.1. Operational Support Grants (up to \$2,000 per year), delegation for funding approval from Council to General Manager, in line with other small community grant streams
 - 5.5.2. Community Inclusion Grants (up to \$20,000), assessment by three-person external panel instead of six-person panel prior to Council approval
 - 5.5.3. grants approved by General Manager, decisions shared with applicants at the same time as Councillors are informed via briefing paper, reducing response time to applicants by three weeks.

Recommendation from management

6. That the Future Melbourne Committee:
 - 6.1. endorses the Community Grants and Partnerships Framework 2022-25 to enable it to take effect ahead of the next round of Social Investment Partnerships at the end of 2022 and all other funding streams at the start of the 2023-24 financial year
 - 6.2. authorises the General Manager Community and City Services to make any further minor editorial changes to the Community Grants and Partnerships Framework 2022-25

Attachments:

1. Supporting Attachment (Page 3 of 22)
2. Community Grants and Partnerships Framework 2022-25 (Page 5 of 22)
3. Community Grants and Partnerships Framework 2022-25 – Summary of Changes (Page 16 of 22)

Supporting Attachment

Legal

1. No direct legal issues arise from the recommendation from management.

Finance

2. The 2022-25 Framework increases the funding situated under the Community Grants and Partnerships program by \$150,000, representing a reallocation of funds from other existing sources:
 - 2.1. The new Connected Neighbourhoods Grants funding stream of \$100,000 each year is included within the current operational budget; and
 - 2.2. The new Community Events Grants funding stream of \$50,000 each year has been transferred to the Community Grants and Partnerships program from the Event Partnership Program, due to the latter program's revised focus on larger, more commercial events.
3. No overall increase in Council funding is requested as part of the Framework.

Conflict of interest

4. No member of Council staff, or other person engaged under a contract, involved in advising on or preparing this report has declared a material or general conflict of interest in relation to the matter of the report.

Health and Safety

5. Initiatives and activities funded through the Community Grants and Partnerships program across the municipality seek to improve the health, safety and wellbeing of the diverse members of the community.
6. All initiatives and events supported under the Framework must adhere to Council policies and requirements to ensure that they are delivered safely.

Stakeholder consultation

7. The 2022-25 Framework was informed by a review of the existing 2018 Framework, undertaken by external consultants in early 2022.
8. The review built on community feedback through grant cycles in recent years, desktop research on best practice, and involved targeted engagement with 31 stakeholders via interviews and focus groups, including grant recipients, Community Grants Assessment Panel members and grant managers in local government and philanthropy.
9. Recommendations on the Community Grants and Partnerships program's strengths and opportunities for improvement from the review have been incorporated into the 2022-25 Framework and will also guide changes to operational activities outside the scope of the Framework.

Relation to Council policy

10. The Framework is designed to directly align with and support the Inclusive Melbourne Strategy and the Neighbourhood Model and, by extension, the 10-year Community Vision and Council Plan 2021-25.
11. Monitoring and evaluation will take place on an annual basis to demonstrate how initiatives funded under the Framework contribute to priorities and outcomes articulated in the Inclusive Melbourne Strategy and the Neighbourhood Model

12. The Framework will be reviewed again in 2025 to ensure alignment with the next Council Plan, and will be adjusted as necessary to support new Council priorities.

Environmental sustainability

13. Initiatives and activities funded through the Community Grants and Partnerships program across the municipality contribute to both social and environmental sustainability.

Community Grants and Partnerships Framework 2022-25

Acknowledgement of Traditional Owners

The City of Melbourne respectfully acknowledges the Traditional Owners of the land we govern, the Wurundjeri Woi Wurrung and Bunurong Boon Wurrung peoples of the Eastern Kulin, and pays respect to their Elders past, present and emerging.

We acknowledge and honour the unbroken spiritual, cultural and political connection the Wurundjeri, Bunurong, Dja Dja Wurrung, Taungurung and Wadawurrung peoples of the Eastern Kulin have to this unique place for more than 2000 generations.

We are committed to our reconciliation journey, because at its heart, reconciliation is about strengthening relationships between Aboriginal and non-Aboriginal peoples, for the benefit of all Victorians.

Foreword

Insert short foreword from Cr Ball and Lord Mayor

Introduction

Melbourne is a city of neighbourhoods that takes pride in being a gathering place for diverse communities. Our vision is for Melbourne to be a city where people of all cultures, backgrounds, genders, sexualities, ages and abilities are welcomed, celebrated and protected.

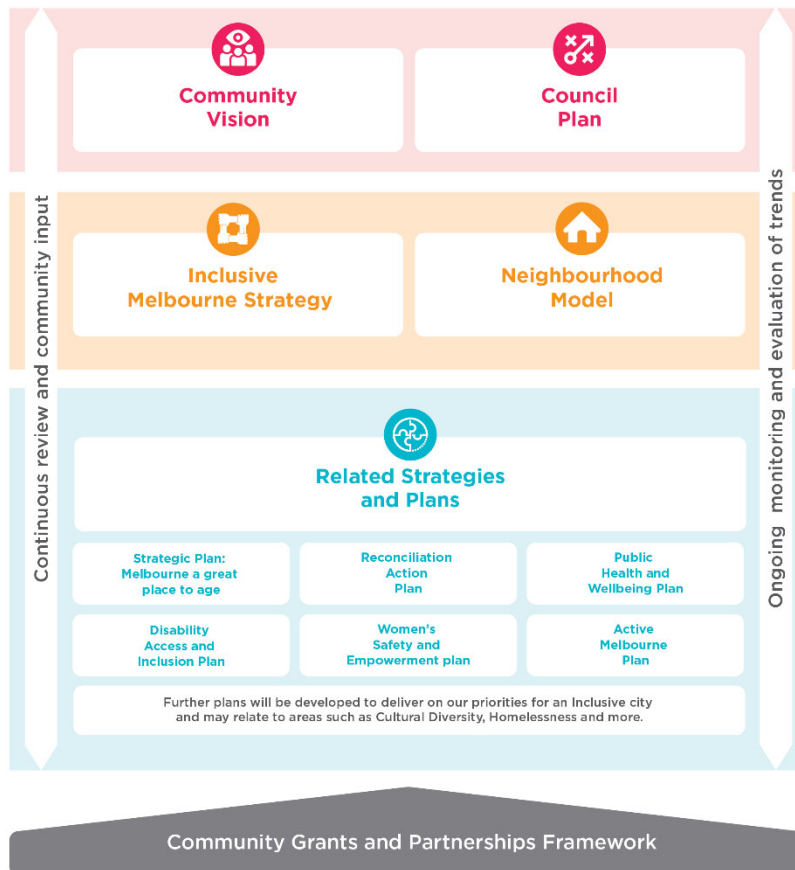
We recognise that we are all better off when everyone can thrive and contribute to the wellbeing of our neighbourhoods and the municipality as a whole. As part of this, the City of Melbourne is committed to empowering community groups and individuals to take action and respond to needs and opportunities where they live.

The Community Grants and Partnerships program supports this commitment by providing funding for community initiatives and events led by individuals, volunteer groups, not-for-profits and purpose-oriented for-profit organisations. The set of funding streams within the program is designed to enable a range of initiatives and activities that facilitate social inclusion, connection and community empowerment across Melbourne’s neighbourhoods.

The Community Grants and Partnerships Framework 2022-25 outlines our approach to delivering this funding to meet community goals in line with Council strategies and objectives.

Strategic Context

The Community Grants and Partnerships Framework 2022–25 aligns with key strategic documents that inform City of Melbourne priorities.



The 10-year Community Vision, “City of Possibility,” describes the long-term aspirations that the community has for Melbourne.

Council Plan 2021–25 is the City of Melbourne’s response to the Community Vision. It outlines the Council’s four-year priorities for achieving this and incorporates the Municipal Health and Wellbeing Plan. It is organised under six strategic objectives:



The **Inclusive Melbourne Strategy 2022-32** will help realise our vision of a truly inclusive Melbourne over the next 10 years. It outlines how the City of Melbourne will embrace the diversity of cultures, ages, genders, sexualities, backgrounds, religions and abilities of the people who live, work, study and visit the city.

The **Neighbourhood Model** has been developed to drive more meaningful connection with, and a better understanding of, our local communities so that shared priorities are realised in neighbourhoods across the municipality.

Related Strategies and Plans fall under the umbrella of the Inclusive Melbourne Strategy and inform work happening across our neighbourhoods. They include documents that reflect the City of Melbourne’s commitment to specific communities within our municipality and respond to legislative requirements in relation to certain cohorts.

The **Community Grants and Partnerships Framework 2022–25** translates the strategic direction and ambition of the above strategies and plans into operational detail required for everyday decision making and action. It demonstrates how the Community Grants and Partnerships program supports delivery of Council’s strategic objectives.

An Inclusive Melbourne and a City of Neighbourhoods – the framing for Community Grants and Partnerships

Within the City of Melbourne strategic context, the Community Grants and Partnerships program is designed to directly support the objectives of the Inclusive Melbourne Strategy and the Neighbourhood Model.

Inclusive Melbourne Strategy 2022-32

The ten-year Inclusive Melbourne Strategy recognises that groups of people within the community experience persistent barriers to equal participation. This strategy amplifies the voices of Aboriginal peoples, LGBTIQ+ communities, children and young people, older people, women, people with a disability, culturally and linguistically diverse people, international students and people experiencing poverty and homelessness. As a Major Initiative in the Council Plan 2021-25, it responds to Council Plan objectives (particularly Safety and Wellbeing) and provides a framework for the City of Melbourne that progresses inclusion for our city.

The Inclusive Melbourne Strategy has three priorities that speak to how the City of Melbourne’s own operations support our diverse communities:

1. **Organisation, services, programs and places for all** - A diverse and inclusive workforce underpins our delivery of services, programs and places that are accessible and meet the needs of our diverse communities.
2. **Sustainable and fair recovery** - The city’s recovery and regeneration from COVID-19 provides an opportunity to build back better for all. A diverse and resilient community is at the centre of a liveable city.
3. **Empowered, participatory communities** - We want to encourage participation from all community members, ensuring that people feel heard, and their needs are addressed.

The Neighbourhood Model

Implementing the Neighbourhood Model is a Major Initiative in the Council Plan 2021-25 under the Access and Affordability strategic objective.

The Neighbourhood Model focuses on developing a deeper understanding of community needs, strengths and aspirations, enabling community-led action, and guides how the City of Melbourne connects with, understands and responds to its diverse communities. The model aligns strongly with the Inclusive Melbourne Strategy’s ambition to deliver more inclusive and sustainable outcomes for our city through shared problem-solving, open dialogue and meaningful participation.

A neighbourhood approach to how we work with and for our communities

- We deeply understand community strengths and needs to drive our work, investment and advocacy
- We work in a place based way with communities to build a vision for their locality
- We activate communities to lead their own change
- We ensure participation and visibility for diverse voices, views and people
- We create safe spaces for community to connect and get support when needed
- We identify the connections between neighbourhood needs and city wide responses

In community – place based

Scope of Framework

The City of Melbourne invests \$2.35 million every year into community-led initiatives and events and community capacity-building through a range of grants streams, funded partnerships and related programs. This framework covers all these activities.

The 2022-25 framework replaces the existing Community Grants and Partnerships Framework, which was endorsed in 2018. It sets out a clear purpose and principles to guide our investment in community initiatives in Melbourne up to 2025. It will be reviewed and refreshed in 2025, and every four years after that, to align with each new Council Plan.

Our Role

The City of Melbourne plays a critical role in making our diverse residential neighbourhoods, and the city as a whole, a great place to live. We are not a philanthropy or funding agency, but we provide grant funding to collaborate with community members and groups to achieve our shared vision for the city.

What is the role we play?	We empower our communities to identify and respond to local areas of need. We activate community participation and connection. We partner with community organisations to deliver shared outcomes. We build capacity within the community sector.
----------------------------------	--

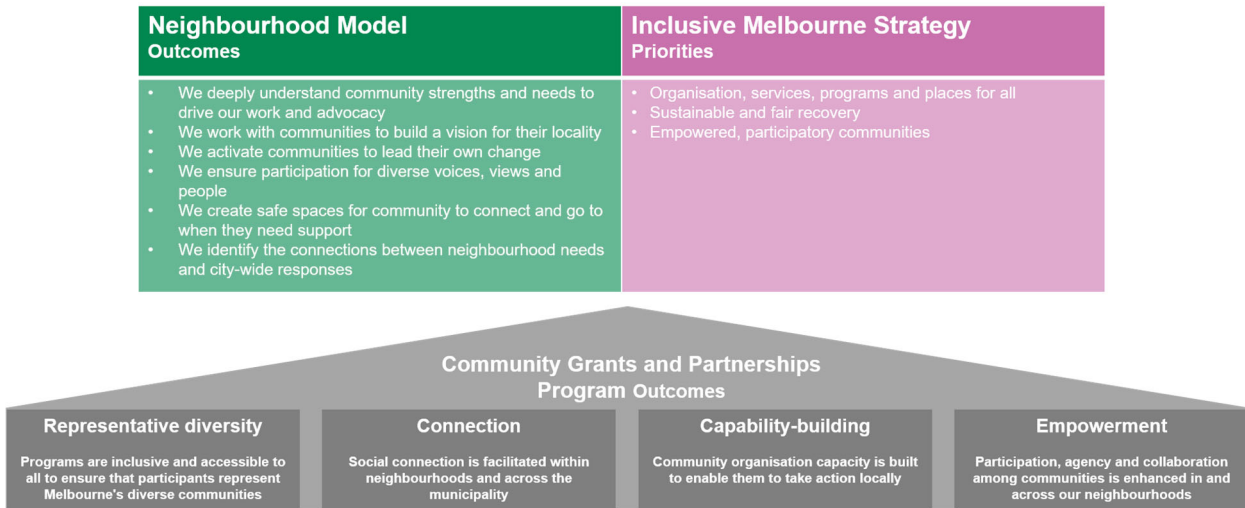
Our Purpose and Objectives

The purpose of the City of Melbourne’s funding of Community Grants and Partnerships is:

To support and empower diverse people and communities to become engaged, to connect and to take local action

Outcomes We Want to Achieve

Our Community Grants and Partnerships program supports the strategic priorities in the Inclusive Melbourne Strategy and the Neighbourhood Model. The outcomes for the program represent the City of Melbourne’s objectives for both how we deliver grants and partnerships in an inclusive way, and what program funding can achieve for the communities we serve.



Key Deliverables

Our program outcomes and funding stream deliverables make clear where the City of Melbourne wants to target its community funding to make the greatest impact in line with our strategic priorities. The principles and outcomes will be reflected in all of the City of Melbourne’s Community Grants and Partnerships funding. The funding stream deliverables provide a high-level purpose for what we aim to facilitate through specific components of the program.

Community Grants and Partnerships Program Outcomes



Funding Stream Deliverables



Principles

We will use our principles to guide the strategic choices we need to make about who and what we fund.

Principles	
1	Impact – We take a purposeful and strategic approach to funding projects that deliver meaningful social impact in line with municipal priorities.
2	Partnership – We know we can't solve tough problems alone. We use our funding to establish partnerships with organisations and individuals who share our ambitions for our communities.
3	Innovation – We discover new solutions to changing community needs and foster innovative approaches to addressing our social challenges.
4	Transparency – We are transparent in our funding priorities, processes and decisions.
5	Responsiveness – We listen to our communities and adapt our funding focus areas and processes to be relevant, timely and proportionate.

Framework Implementation

The framework seeks to align funding streams with community needs and council priorities. It also includes two new funding streams: Neighbourhood Grants is a new stream to support neighbourhood-specific initiatives led by individuals or local organisations; Community Events combines previous Community Grants and Partnerships funding for events with City of Melbourne's broader events funding for events up to 5,000 people.

Program streams

Funding Streams	Annual Budget Target	Value and Duration	Application Cycle	Focus area
Inclusive Community Grants Grants to support community connection, social inclusion, access and participation				
Operational Support Grants	\$1.35M	Up to \$2,000 per year for two years	Every six months	Grants to support general operations and core activities of volunteer-run groups.
Community Inclusion Grants		Up to \$20,000 for one year	Every six months	Grants to support not-for-profit and volunteer-run community initiatives aligned with Council priorities.
Social Investment Partnerships		\$25,000 - \$80,000 per year for two years	Every two years	Partnership-based funding to tackle City of Melbourne's inclusion priorities and facilitate sustained social change. Guidelines may specify themes for each round. Eligibility extends to social enterprises and B Corporations.

Funding Streams	Annual Budget Target	Value and Duration	Application Cycle	Focus area
Connected Neighbourhood Grants	\$100,000	Up to \$2,000 for one year	Monthly	Grants to support individuals and organisations to facilitate social connection and take action at a neighbourhood level, in line with priorities emerging from the Neighbourhood Model.
Aboriginal Melbourne Grants	\$40,000	Up to \$10,000 for one year	Monthly	Grants to support and empower Aboriginal and Torres Strait Islander individuals and organisations to engage, connect and take local action within the City of Melbourne.
Community Meals Subsidy	\$161,650	Up to \$10,000 for use in one year	Annual	Funding for groups and organisations based in the City of Melbourne that provide social connection through meals for older people. Funding is based on a per-person subsidy of \$5.00 for up to 175 people over the age of 55, for up to 12 sessions per year.
Inclusive Sport and Recreation Grants Grants to increase diverse participation in local, national and international sports and recreation activities				
Inclusion Support Grants	\$20,000	Up to \$500 for use in one year	Monthly	Support for children and young people who reside in the City of Melbourne to participate in community sport.
Individual Participation Grants		\$300 for individual for national competition \$500 for team for national competition \$500 for individual for international competition \$700 for team for international competition	Monthly	Support for promising individuals and teams to achieve their sporting goals.
Inclusive Events Grants Grants to celebrate diversity and facilitate community connection through large and small events				

Funding Streams	Annual Budget Target	Value and Duration	Application Cycle	Focus area
Community Events Grants	\$50,000	Up to \$10,000 per event	Every six months	Grants to facilitate delivery of community events of up to 5,000 people.
Community Use of Town Hall Scheme (CUTHS)	\$200,000	Up to \$7,000 per event	Monthly	Grants to enable community groups to affordably access civic spaces to run events.
Community Funding Agreements Collaborative partnerships with Neighbourhood Houses to deliver community development outcomes				
Neighbourhood House Agreements	\$400,000	\$100,000	Every four years	Long-term collaborative partnerships to support the delivery of community development outcomes at a neighbourhood level. Individual agreements are negotiated with each Neighbourhood House to align funded activities with Council priorities.
Community Capacity Building and Education Resources to provide community organisations with opportunities to build skills and knowledge to enhance community outcomes				
Capability Building and Community Education	\$30,000	Upon application	Monthly	Support for community groups to build capacity through education and professional development.
Total annual budget \$2.35M				

Funding by frequency

The Community Grants and Partnerships Framework seeks to ensure that funding streams are flexible and responsive to community needs. This includes aligning frequency of funding rounds for each funding stream with its purpose to enable groups and individuals to apply for grants as opportunities or needs arise. A summary of grant funding streams by application cycle is below.

Community Grants and Partnerships Funding Stream	Value and duration
Monthly	
Connected Neighbourhood Grants	Up to \$2,000 for one year
Aboriginal Melbourne Grants	Up to \$10,000 for one year
Individual Sport and Recreation Grants	\$300 for individual for national competition \$500 for individual for international competition \$500 for team for national competition \$700 for team for international competition
Inclusion Sport and Recreation Support Grants	Up to \$500 for one year
Community Use of Town Hall Scheme (CUTHS)	Up to \$7,000
Capability Building and Community Education	Determined on application
Every six months	
Operational Support Grants	Up to \$2,000 per year for up to two years
Community Inclusion Grants	Up to \$20,000 for one year
Community Events Grants	Up to \$10,000
Annual	
Community Meals Subsidy	Up to \$10,000 for one year
Every two years	
Social Investment Program	\$25,000 - \$80,000 per year for up to two years
Every four years	
Neighbourhood House Agreements	\$100,000 per year for four years

Eligibility

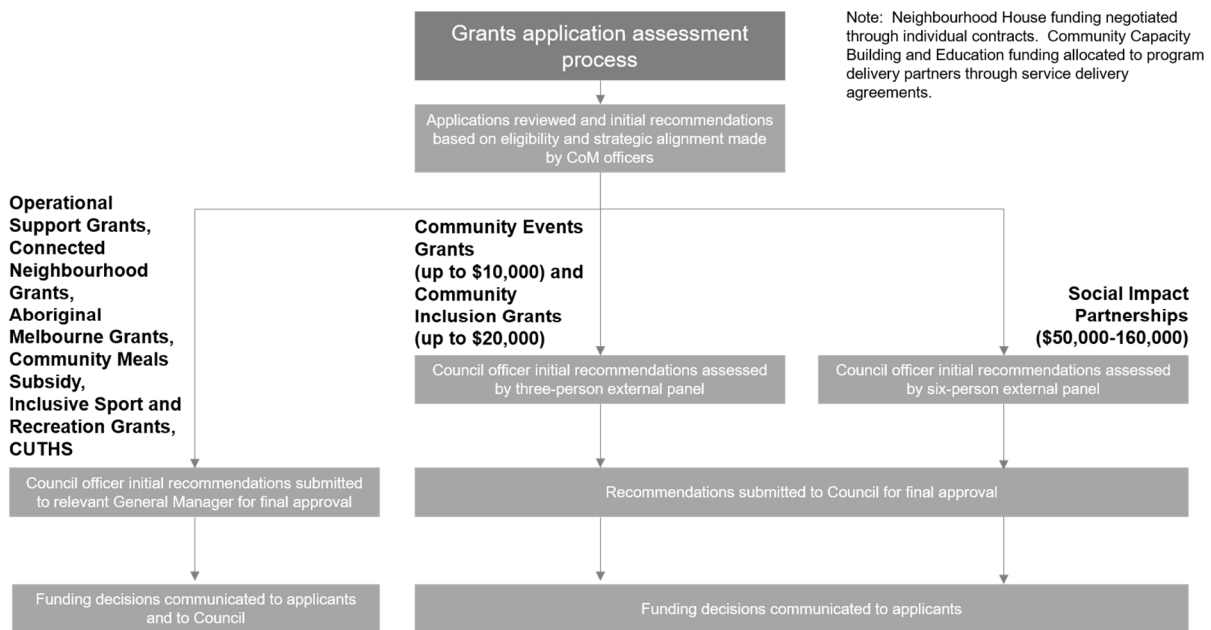
All funded projects, events and initiatives, with the exception of the Inclusive Sport and Recreation Grants, must result in a public outcome within City of Melbourne boundaries. Applicants from outside of City of Melbourne may be eligible, but funded activities must benefit communities within the municipality.

More specific eligibility and assessment criteria are provided in the guidelines for each program stream.

Decision tree for funding

Each application will go through a decision-making process that supports proportionate and timely assessment relative to the scale of funding. Applications will be assessed based on eligibility and strategic alignment with Council goals.

Applications for larger grants will be reviewed by an external Assessment Panel of independent community members. The purpose of the Assessment Panel is to review, assess and provide objective, independent recommendations to Council in relation to funding for grants and sponsorship programs, and to ensure that guidelines and assessment criteria endorsed by Council have been applied consistently and equitably for all applications. Panel members are identified through an Expression of Interest process, with selection criteria focused on merit, skills and expertise, taking into account diversity principles. Details on the role of the Assessment Panel can be found on the [Grants and sponsorships page on the City of Melbourne Website](#).



Understanding Success

We want to measure the direct impact of Community Grants and Partnerships on the outcomes and deliverables we have set for ourselves, in line with Council's strategic priorities.

How we will measure success

The measures outlined here are not funding criteria, but will help us to understand whether our principles and outcomes are being met. This includes identifying opportunities for us to improve our delivery of the Community Grants and Partnerships program.

Additional success measures for each funding stream, as well as funding criteria, are outlined in each stream's specific guidelines.

Community Grants and Partnerships Program outcomes

What we will measure

<p>Representative diversity Programs are inclusive and accessible to all to ensure that participants represent Melbourne's diverse communities</p>	<ul style="list-style-type: none"> • Grants applicants and recipients are representative of our diverse communities within and across neighbourhoods • Participants in funded initiatives represent our diverse communities within and across neighbourhoods • Diverse applicants report positive experiences in accessing information and navigating the application and acquittal processes • Feedback from diverse community members informs updates or changes to program operations • Information is presented in line with the latest accessibility and universal design standards
<p>Connection Social connection is facilitated with neighbourhoods and across the municipality</p>	<ul style="list-style-type: none"> • Participants in funded activities report positive experiences that contribute to a stronger sense of connection to their neighbourhood and / or community
<p>Empowerment Participation, agency and collaboration among communities is enhanced in and across our neighbourhoods</p>	<ul style="list-style-type: none"> • Groups and individuals apply for funding to run community-led initiatives to enable delivery of priorities identified through the Neighbourhood Planning Portals • Funded initiatives demonstrate collaborative approaches to achieving outcomes aligned with Council and community-identified priorities
<p>Capability-building Community organisation capacity is built to enable them to take action locally</p>	<ul style="list-style-type: none"> • Community groups participating in capacity-building activities report improvements in skills and knowledge in line with activities' focus areas and objectives • Small organisations increasingly participate in capacity-building activities • Grant recipients effectively make use of funding provided to deliver programs within agreed timelines and parameters

Reporting on progress

Data will be collected for all program-wide and funding stream-specific measures each year. This will enable program outcomes to be measured and evaluated in relation to the priorities of the Inclusive Melbourne Strategy and the Neighbourhood Model.

We will report publicly on what and who we fund and how our grants and partnerships are benefiting our communities and contributing to City of Melbourne's strategic ambitions.

Community Grants and Partnerships Framework 2022-25 – Summary of changes

The tables below summarise the changes from the Community Grants and Partnerships Framework 2018 to the Community Grants and Partnerships Framework 2022-25. The first table notes changes to the overall structure and inclusions in the document, and the second table specifies changes to individual funding streams, including funding amounts and decision-making processes.

The majority of these changes have been informed by a review of the Community Grants and Partnerships program undertaken in early 2022, which recommended updates to the program under five themes:

1. **Strategic alignment** - Need to increase strategic alignment of Community Grants outcomes with Council priorities
2. **Whole-of-organisation approach** - Opportunity for CoM to take a whole-of-council approach to grants policies, resourcing and administration
3. **Partnerships** - Opportunity for formal and informal granting partnerships to better reach the community and increase program value and impact
4. **Updated service model** - Value from more focus on the pre-application process to strengthen applicants' navigation of process and improve program outcomes
5. **Proportionate and timely processes** - Need to provide proportionate and timely processes for granting to respond to the changing nature and needs of the community and enable better outcomes

Not all recommendations from the review apply to the framework, with many being used to inform changes to underpinning processes, but those that do have been incorporated in this new version.

Table 1: Framework purpose, structure and inclusions

Framework section	Previous (2018 Framework)	Replacement (2022-25 Framework)	Rationale for change
Overall framework structure	<ul style="list-style-type: none"> • Follows a basic format, not designed as a CoM branded document • Provides limited information about some overarching aspects of the Community Grants and Partnerships program 	<ul style="list-style-type: none"> • Structured and designed to align with the Creative Funding Framework and other public-facing policy documents • Provides additional detail about key program elements (outlined below) 	<ul style="list-style-type: none"> • Aligns with the Creative Funding Framework and adheres to Council branding to support a 'whole-of-council' approach to granting • Offers a robust public resource
Strategic Context / An Inclusive Melbourne and a City of Neighbourhoods	<ul style="list-style-type: none"> • Does not reference Council strategies supported by / guiding the Framework • Places granting in general context of benefits of community-led initiatives 	<ul style="list-style-type: none"> • Illustrates Framework in context of key Council strategies and plans, particularly the Inclusive Melbourne Strategy and Neighbourhood Model 	<ul style="list-style-type: none"> • Clarifies strategic purpose and alignment for Community Grants and Partnerships program

Framework section	Previous (2018 Framework)	Replacement (2022-25 Framework)	Rationale for change
Scope of Framework	<ul style="list-style-type: none"> Does not specify an end date or review date for the framework 	<ul style="list-style-type: none"> Specifies that the framework will be reviewed every four years to align with the Council Plan 	<ul style="list-style-type: none"> Ensures that the framework's strategic positioning, funding allocations and decision-making support current Council and community priorities
Our Role	<ul style="list-style-type: none"> Outlines Council's role in granting 	<ul style="list-style-type: none"> No change 	<ul style="list-style-type: none"> N/A
Our Purpose and Objectives	<ul style="list-style-type: none"> Outlines a general purpose for funding community-led action 	<ul style="list-style-type: none"> Specifies a purpose statement, outcomes derived from Council's strategic priorities and deliverables directly linked to funding streams 	<ul style="list-style-type: none"> Reinforces alignment with key strategies Sets up approach for monitoring and evaluation of program value for communities and CoM
Principles	<ul style="list-style-type: none"> Includes principles of: Impact, Inclusion, Connection, Partnership, Innovation and Transparency 	<ul style="list-style-type: none"> Removes 'Inclusion' and 'Connection' and introduces a new principle of 'Responsiveness' 	<ul style="list-style-type: none"> Identifies 'Inclusion' and 'Connection' as part of program outcomes Acknowledges 'Responsiveness' to community (e.g., timeliness in communicating funding decision) in response to review findings
Framework Implementation	<ul style="list-style-type: none"> Specifies individual budget lines and descriptions for each funding stream Does not include funding by frequency Does not include information on grant application assessment 	<ul style="list-style-type: none"> Outlines funding streams by program and by frequency Illustrates decision-making process for grant application assessment Includes total budget increase of \$150,000 per year (potential additional budget increases to be considered as part of FY2023-24 planning) No changes to duration of funding for each grant stream <i>See Table 2 for specific changes by funding stream</i> 	<ul style="list-style-type: none"> Increases accessibility and transparency of information for communication to public Budget increase under the framework a result of reallocated operational funds to support new Connected Neighbourhoods Grants (\$100,000 existing operational funding reallocated to align more strategically with the Neighbourhood Planning Framework, as endorsed by Council on 14 June 2022) and Community Events grant streams (\$50,000 existing events funding reallocated from the Event Partnership Program due to its recently revised focus on larger, more commercial events)

Framework section	Previous (2018 Framework)	Replacement (2022-25 Framework)	Rationale for change
			<ul style="list-style-type: none"> Any other potential increases to overall budget will require review as part of FY2023-24 budget
Understanding Success	<ul style="list-style-type: none"> Does not include information on program measurement Program monitoring and evaluation fairly limited and aligned to broad community indicators 	<ul style="list-style-type: none"> Includes specific indicators for measuring program-wide progress and success, aligned with the Inclusive Melbourne Strategy and the Neighbourhood Model 	<ul style="list-style-type: none"> Reinforces alignment with key strategies Sets up approach for monitoring and evaluation of program value for communities and CoM

Table 2: Funding streams

Funding program	Previous stream structures (2018 Framework)	Replacement stream structures (2022-25 Framework) Changes highlighted in bold	Rationale for change
<p>Inclusive Community Grants (previously Connected Community Grants/ Annual Grants)</p> <p>Total \$1.68M per year for all Inclusive Community Grants streams</p> <p>\$1.35M per year combined for Operational Support Grants, Community Inclusion Grants and Social Investment Partnerships (this is an increase of \$105,000 for these three streams, with \$100,000 reallocated from CUTHS and \$5,000 from Community Capacity Building and Education; the three stream-specific line-</p>	<p><u>Connected Communities Small Grants</u></p> <ul style="list-style-type: none"> Up to \$1,550 per year for two years (as per framework - was informally increased to \$2,000 per year in FY2022-23) Annual Funding approved by Council based on eligibility Decisions communicated to applicants following Council approval 	<p><u>Operational Support Grants</u></p> <ul style="list-style-type: none"> Up to \$2,000 per year for up to two years Every six months Funding approved by relevant General Manager (GM) based on eligibility Decisions communicated to Council and applicants simultaneously 	<ul style="list-style-type: none"> Increased amount per grant in response to rising operational costs Increased frequency to be more flexible and responsive to community needs Earlier communication to applicants to improve responsiveness in proportion with small size of grants
	<p><u>Connected Communities Impact Grants</u></p> <ul style="list-style-type: none"> \$1,551-20,000 for one year Annual Funding recommended by six-person external panel and approved by Council Decisions communicated to applicants following Council approval 	<p><u>Community Inclusion Grants</u></p> <ul style="list-style-type: none"> Up to \$20,000 for one year Every six months Funding recommended by three-person external panel and approved by Council Decisions communicated to applicants following Council approval 	<ul style="list-style-type: none"> Increased frequency to be more flexible and responsive to community needs External panel review streamlined to align process to be commensurate with scale of grants
	<p><u>Social Investment Partnerships</u></p> <ul style="list-style-type: none"> \$15,000-80,000 per year for up to two years Every two years Funding recommended by six-person external panel and approved by Council 	<p><u>Social Investment Partnerships</u></p> <ul style="list-style-type: none"> \$25,000-80,000 per year for up to two years Every two years Funding recommended by six-person external panel and approved by Council 	<ul style="list-style-type: none"> Increased minimum funding to recognise scale of initiatives aligned with Council strategic priorities expected to be supported through this stream
	<p><u>N/A – new funding stream</u></p>	<p><u>Connected Neighbourhood Grants</u></p> <ul style="list-style-type: none"> Up to \$2,000 for one year Total budget \$100,000 per year Monthly 	<ul style="list-style-type: none"> New program introduced to support community-led initiatives in line with Neighbourhood Model priorities

Funding program	Previous stream structures (2018 Framework)	Replacement stream structures (2022-25 Framework) Changes highlighted in bold	Rationale for change
items have also been combined)		<ul style="list-style-type: none"> • Funding approved by relevant GM based on eligibility / strategic alignment • Decisions communicated to Council and applicants simultaneously 	<ul style="list-style-type: none"> • Funding sourced from existing operational funds that have been aggregated to establish a more strategic use in line with the Neighbourhood Planning Framework
	<u>Aboriginal Melbourne Grants</u> <ul style="list-style-type: none"> • Up to \$10,000 for one year • Total budget \$40,000 per year • Monthly • Funding approved by relevant GM based on eligibility / strategic alignment • Decisions communicated to Council first, then to applicants 	<u>Aboriginal Melbourne Grants</u> <ul style="list-style-type: none"> • Up to \$10,000 for one year • Total budget \$40,000 per year • Monthly • Funding approved by relevant GM based on eligibility / strategic alignment • Decisions communicated to Council and applicants simultaneously 	<ul style="list-style-type: none"> • Earlier communication to applicants to improve responsiveness
	<u>Community Meals Subsidy</u> <ul style="list-style-type: none"> • Up to \$10,000 for one year, \$4.50/person for up to 200 people for up to 12 events • Total budget \$152,692 per year • Annual • Funding approved by relevant GM based on eligibility • Decisions communicated to Council first, then to applicants 	<u>Community Meals Subsidy</u> <ul style="list-style-type: none"> • Up to \$10,000 for one year, \$5.00/person for up to 175 people for up to 12 events • Total budget \$161,650 per year (CPI increase) • Annual • Funding approved by relevant GM based on eligibility • Decisions communicated to Council and applicants simultaneously 	<ul style="list-style-type: none"> • Earlier communication to applicants to improve responsiveness
Inclusive Sport and Recreation Grants Total \$20,000 per year	<u>Inclusion Support Grants</u> <ul style="list-style-type: none"> • Up to \$500 • Quarterly • Funding approved by relevant GM based on eligibility 	<u>Inclusion Support Grants</u> <ul style="list-style-type: none"> • Up to \$500 • Monthly • Funding approved by relevant GM based on eligibility 	<ul style="list-style-type: none"> • Increased frequency to be more flexible and responsive to community needs • Earlier communication to applicants to improve responsiveness

Funding program	Previous stream structures (2018 Framework)	Replacement stream structures (2022-25 Framework) Changes highlighted in bold	Rationale for change
	<ul style="list-style-type: none"> Decisions communicated to Council first, then to applicants 	<ul style="list-style-type: none"> Decisions communicated to Council and applicants simultaneously 	
<p>Inclusive Events Grants</p> <p>Total \$250,000 per year</p>	<p><u>N/A – new funding stream</u></p>	<p><u>Community Events Grants</u></p> <ul style="list-style-type: none"> Up to \$10,000 per event Total budget \$50,000 per year (transferred from Event Partnership Program) Every six months Funding recommended by three-person external panel and approved by Council Decisions communicated to applicants following Council approval 	<ul style="list-style-type: none"> New stream created to accommodate community events up to 5,000 people no longer supported by Event Partnership Program funding due to its reorientation to focus on larger, more commercial events \$50,000 to be transferred annually from Events (for events up to 5,000 people that were previously supported by Event Partnership Program)
	<p><u>Community Use of Town Halls (CUTHS)</u></p> <ul style="list-style-type: none"> Up to \$7,000 Total budget \$300,000 per year Monthly 	<p><u>Community Use of Town Halls (CUTHS)</u></p> <ul style="list-style-type: none"> Up to \$7,000 Total budget \$200,000 per year Monthly 	<ul style="list-style-type: none"> Total budget reduced and reallocated to Inclusive Community Grants based on demand and relative benefit of each funding stream Earlier communication to applicants to improve responsiveness

Funding program	Previous stream structures (2018 Framework)	Replacement stream structures (2022-25 Framework) Changes highlighted in bold	Rationale for change
	<ul style="list-style-type: none"> • Funding approved by relevant GM based on eligibility • Decisions communicated to Council first, then to applicants 	<ul style="list-style-type: none"> • Funding approved by relevant GM based on eligibility • Decisions communicated to Council and applicants simultaneously 	
Community Funding Agreements \$400,000 per year	<u>Neighbourhood House Agreements</u> <ul style="list-style-type: none"> • \$100,000 per Neighbourhood House per year • Negotiated through individual agreements 	<u>Neighbourhood House Agreements</u> <ul style="list-style-type: none"> • \$100,000 per Neighbourhood House per year • Negotiated through individual agreements 	<ul style="list-style-type: none"> • No changes
Community Capacity Building and Education \$30,000	<u>Community Education and Professional Development</u> <ul style="list-style-type: none"> • Amount upon application • Total budget \$30,000 • Monthly • Negotiated through individual agreements 	<u>Community Education and Professional Development</u> <ul style="list-style-type: none"> • Amount upon application • Total budget \$30,000 • Monthly • Negotiated through individual agreements 	<ul style="list-style-type: none"> • No changes
	<u>City of Melbourne Networking and Learning Events</u> <ul style="list-style-type: none"> • Total budget \$5,000 • Annual event hosted by CoM 	<u>N/A – funding stream discontinued</u> <ul style="list-style-type: none"> • Funding reallocated to Inclusive Community Grants 	<ul style="list-style-type: none"> • Budget reallocated to Inclusive Community Grants based on demand and relative benefit of each funding stream