

Rev No.	Date	Reason for Issue	Issued by	Rev No.	Date	Reason for Issue	Issued by	Rev No.	Date	Reason for Issue	Issued by	Rev No.	Date	Reason for Issue	Issued by
Rev A	23.11.2020	NOT ISSUED		Rev B	23.11.2020	ISSUED FOR INFORMATION		Rev C	23.01.2021	ISSUED FOR INFORMATION		Rev D	12.02.2021	ISSUED FOR INFORMATION	
Rev E	06.04.2021	ISSUED FOR TOWN PLANNING (CONSOLIDATED SITE)													

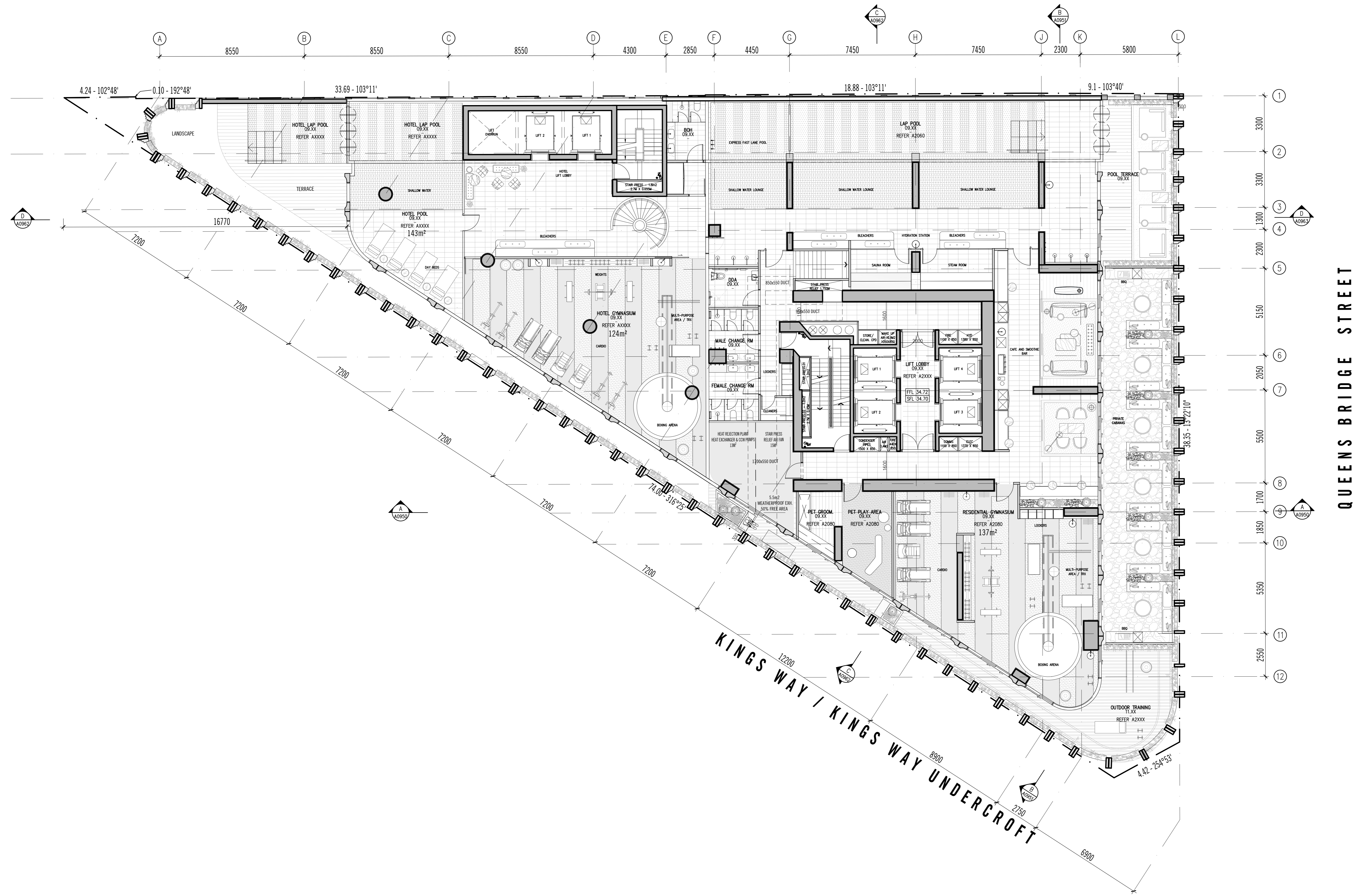
Qualities of use
 1. The design shall be in accordance with the requirements of the Building Regulations and the relevant codes of practice.
 2. The design shall be in accordance with the requirements of the relevant codes of practice and the relevant codes of practice.
 3. The design shall be in accordance with the requirements of the relevant codes of practice and the relevant codes of practice.
 4. The design shall be in accordance with the requirements of the relevant codes of practice and the relevant codes of practice.
 5. The design shall be in accordance with the requirements of the relevant codes of practice and the relevant codes of practice.

1:100
 SCALE @ A0
PRELIMINARY
NOT FOR CONSTRUCTION
 Report any discrepancies to the Architect before proceeding with the work.

ELENBERG FRASER
 LEVEL 1, 160 QUEEN STREET
 MELBOURNE VICTORIA 3000 AUSTRALIA
 TEL: 461 9600 2260
 EMAIL: MAIL@ELENBERGFRASER.COM
 WWW.ELENBERGFRASER.COM
 ABB 17 148 176

Project Title
NO. 15-23 KINGS WAY & 84-90 QUEENS BRIDGE ST, SOUTHBANK
TIME & PLACE

Drawing Title
GENERAL ARRANGEMENT PLAN LEVEL 08 FLOOR PLAN
 Project Number
20032
 Drawing Number
A0108
 Revision
J
 Apr 06, 2021 - 9:58am



QUEENS BRIDGE STREET

KINGS WAY / KINGS WAY UNDERCROFT

Rev No.	Date	Reason for Issue	Issued by	Rev No.	Date	Reason for Issue	Issued by	Rev No.	Date	Reason for Issue	Issued by	Rev No.	Date	Reason for Issue	Issued by
Rev A	21.12.2020	NOT ISSUED		Rev B	21.12.2020	ISSUED FOR INFORMATION	TR	Rev C	22.01.2021	ISSUED FOR INFORMATION	TR	Rev D	12.03.2021	ISSUED FOR INFORMATION	TR
Rev E	06.04.2021	ISSUED FOR TOWN PLANNING (CONSOLIDATED SITE)													

Qualities of use
 1. This document is to be used in accordance with the terms of the Conditions of Sale set out in the contract and subject to the terms of the Conditions of Sale set out in the contract.
 2. This document is not to be used for any other purpose without the prior written consent of the Architect.
 3. This document is not to be used for any other purpose without the prior written consent of the Architect.
 4. This document is not to be used for any other purpose without the prior written consent of the Architect.
 5. This document is not to be used for any other purpose without the prior written consent of the Architect.
 6. This document is not to be used for any other purpose without the prior written consent of the Architect.
 7. This document is not to be used for any other purpose without the prior written consent of the Architect.
 8. This document is not to be used for any other purpose without the prior written consent of the Architect.
 9. This document is not to be used for any other purpose without the prior written consent of the Architect.
 10. This document is not to be used for any other purpose without the prior written consent of the Architect.

1:100
 SCALE@A0
PRELIMINARY
NOT FOR CONSTRUCTION

ELENBERG FRASER
 LEVEL 1, 150 QUEEN STREET
 MELBOURNE VICTORIA 3000 AUSTRALIA
 TEL 461 3 9600 2290
 EMAIL MAIL@ELENBERGFRASER.COM
 WWW.ELENBERGFRASER.COM
 ABA 17 148 148 174

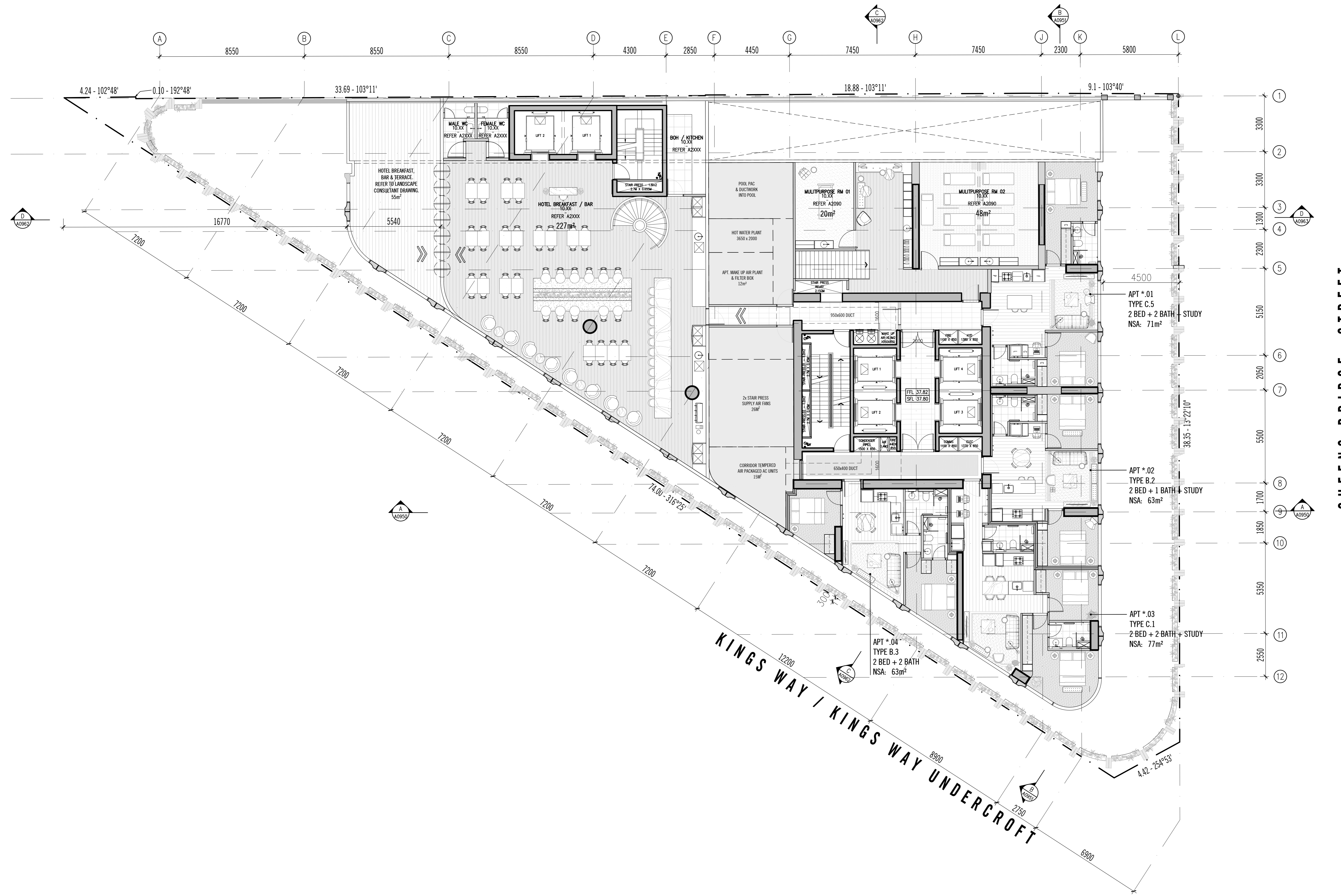
Project Title
NO. 15-23 KINGS WAY & 84-90 QUEENS BRIDGE ST, SOUTHBANK
 TIME & PLACE

Project Number
20032

Drawing Number
A0109

Revision
 J

Apr 06, 2021 - 10:09am



QUEENS BRIDGE STREET

KINGS WAY / KINGS WAY UNDERCROFT

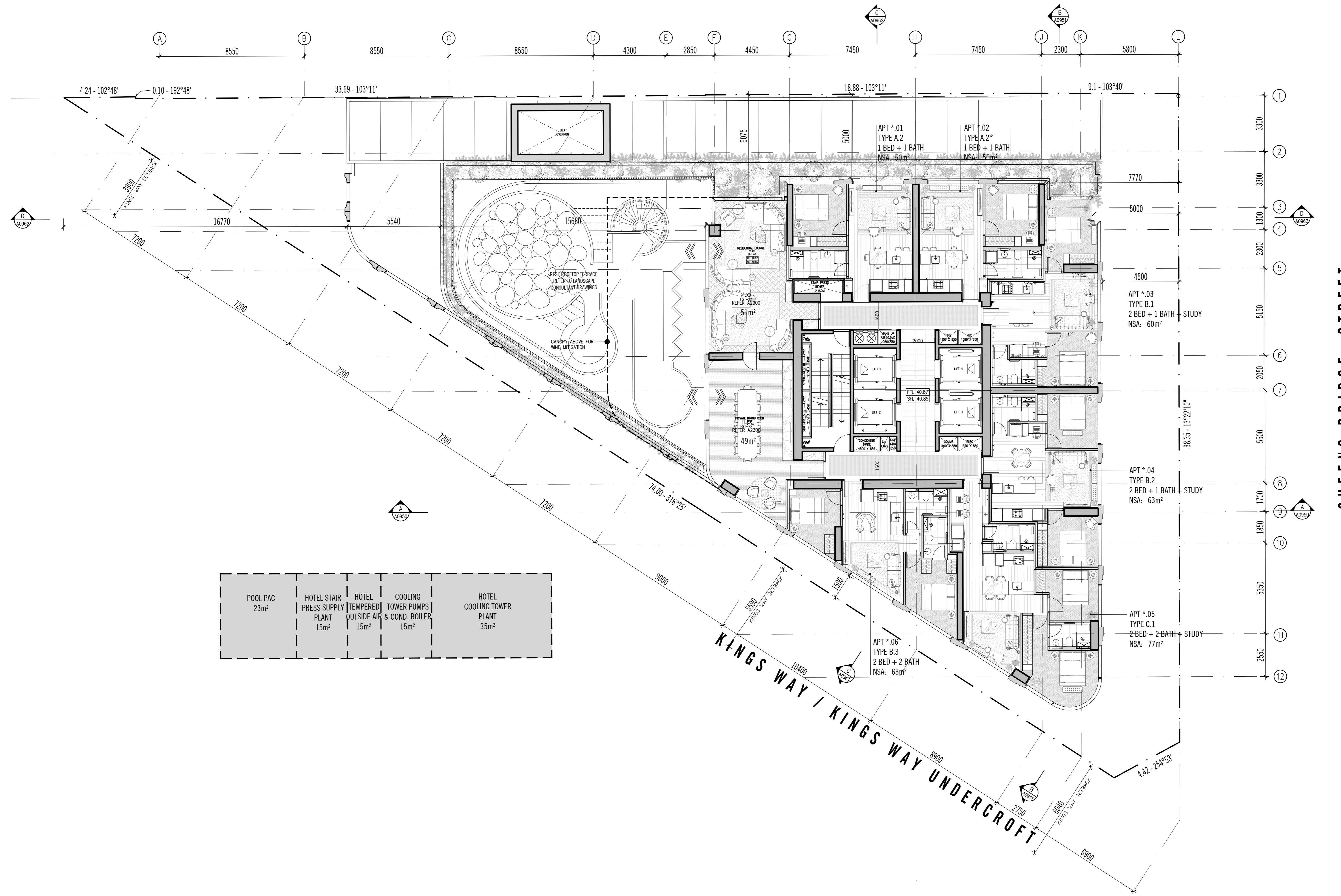
Rev No.	Date	Reason for Issue	Issued by	Rev No.	Date	Reason for Issue	Issued by	Rev No.	Date	Reason for Issue	Issued by	Rev No.	Date	Reason for Issue	Issued by
Rev 1	15.02.2020	ISSUED FOR INFORMATION	CC	Rev 2	15.02.2020	ISSUED FOR INFORMATION	CC	Rev 3	15.02.2020	ISSUED FOR INFORMATION	CC	Rev 4	15.02.2020	ISSUED FOR INFORMATION	CC
Rev 5	15.02.2020	ISSUED FOR INFORMATION	CC	Rev 6	15.02.2020	ISSUED FOR INFORMATION	CC	Rev 7	15.02.2020	ISSUED FOR INFORMATION	CC	Rev 8	15.02.2020	ISSUED FOR INFORMATION	CC
Rev 9	15.02.2020	ISSUED FOR INFORMATION	CC	Rev 10	15.02.2020	ISSUED FOR INFORMATION	CC	Rev 11	15.02.2020	ISSUED FOR INFORMATION	CC	Rev 12	15.02.2020	ISSUED FOR INFORMATION	CC
Rev 13	15.02.2020	ISSUED FOR INFORMATION	CC	Rev 14	15.02.2020	ISSUED FOR INFORMATION	CC	Rev 15	15.02.2020	ISSUED FOR INFORMATION	CC	Rev 16	15.02.2020	ISSUED FOR INFORMATION	CC
Rev 17	15.02.2020	ISSUED FOR INFORMATION	CC	Rev 18	15.02.2020	ISSUED FOR INFORMATION	CC	Rev 19	15.02.2020	ISSUED FOR INFORMATION	CC	Rev 20	15.02.2020	ISSUED FOR INFORMATION	CC
Rev 21	15.02.2020	ISSUED FOR INFORMATION	CC	Rev 22	15.02.2020	ISSUED FOR INFORMATION	CC	Rev 23	15.02.2020	ISSUED FOR INFORMATION	CC	Rev 24	15.02.2020	ISSUED FOR INFORMATION	CC
Rev 25	15.02.2020	ISSUED FOR INFORMATION	CC	Rev 26	15.02.2020	ISSUED FOR INFORMATION	CC	Rev 27	15.02.2020	ISSUED FOR INFORMATION	CC	Rev 28	15.02.2020	ISSUED FOR INFORMATION	CC
Rev 29	15.02.2020	ISSUED FOR INFORMATION	CC	Rev 30	15.02.2020	ISSUED FOR INFORMATION	CC	Rev 31	15.02.2020	ISSUED FOR INFORMATION	CC	Rev 32	15.02.2020	ISSUED FOR INFORMATION	CC
Rev 33	15.02.2020	ISSUED FOR INFORMATION	CC	Rev 34	15.02.2020	ISSUED FOR INFORMATION	CC	Rev 35	15.02.2020	ISSUED FOR INFORMATION	CC	Rev 36	15.02.2020	ISSUED FOR INFORMATION	CC
Rev 37	15.02.2020	ISSUED FOR INFORMATION	CC	Rev 38	15.02.2020	ISSUED FOR INFORMATION	CC	Rev 39	15.02.2020	ISSUED FOR INFORMATION	CC	Rev 40	15.02.2020	ISSUED FOR INFORMATION	CC
Rev 41	15.02.2020	ISSUED FOR INFORMATION	CC	Rev 42	15.02.2020	ISSUED FOR INFORMATION	CC	Rev 43	15.02.2020	ISSUED FOR INFORMATION	CC	Rev 44	15.02.2020	ISSUED FOR INFORMATION	CC
Rev 45	15.02.2020	ISSUED FOR INFORMATION	CC	Rev 46	15.02.2020	ISSUED FOR INFORMATION	CC	Rev 47	15.02.2020	ISSUED FOR INFORMATION	CC	Rev 48	15.02.2020	ISSUED FOR INFORMATION	CC
Rev 49	15.02.2020	ISSUED FOR INFORMATION	CC	Rev 50	15.02.2020	ISSUED FOR INFORMATION	CC	Rev 51	15.02.2020	ISSUED FOR INFORMATION	CC	Rev 52	15.02.2020	ISSUED FOR INFORMATION	CC
Rev 53	15.02.2020	ISSUED FOR INFORMATION	CC	Rev 54	15.02.2020	ISSUED FOR INFORMATION	CC	Rev 55	15.02.2020	ISSUED FOR INFORMATION	CC	Rev 56	15.02.2020	ISSUED FOR INFORMATION	CC
Rev 57	15.02.2020	ISSUED FOR INFORMATION	CC	Rev 58	15.02.2020	ISSUED FOR INFORMATION	CC	Rev 59	15.02.2020	ISSUED FOR INFORMATION	CC	Rev 60	15.02.2020	ISSUED FOR INFORMATION	CC
Rev 61	15.02.2020	ISSUED FOR INFORMATION	CC	Rev 62	15.02.2020	ISSUED FOR INFORMATION	CC	Rev 63	15.02.2020	ISSUED FOR INFORMATION	CC	Rev 64	15.02.2020	ISSUED FOR INFORMATION	CC
Rev 65	15.02.2020	ISSUED FOR INFORMATION	CC	Rev 66	15.02.2020	ISSUED FOR INFORMATION	CC	Rev 67	15.02.2020	ISSUED FOR INFORMATION	CC	Rev 68	15.02.2020	ISSUED FOR INFORMATION	CC
Rev 69	15.02.2020	ISSUED FOR INFORMATION	CC	Rev 70	15.02.2020	ISSUED FOR INFORMATION	CC	Rev 71	15.02.2020	ISSUED FOR INFORMATION	CC	Rev 72	15.02.2020	ISSUED FOR INFORMATION	CC
Rev 73	15.02.2020	ISSUED FOR INFORMATION	CC	Rev 74	15.02.2020	ISSUED FOR INFORMATION	CC	Rev 75	15.02.2020	ISSUED FOR INFORMATION	CC	Rev 76	15.02.2020	ISSUED FOR INFORMATION	CC
Rev 77	15.02.2020	ISSUED FOR INFORMATION	CC	Rev 78	15.02.2020	ISSUED FOR INFORMATION	CC	Rev 79	15.02.2020	ISSUED FOR INFORMATION	CC	Rev 80	15.02.2020	ISSUED FOR INFORMATION	CC
Rev 81	15.02.2020	ISSUED FOR INFORMATION	CC	Rev 82	15.02.2020	ISSUED FOR INFORMATION	CC	Rev 83	15.02.2020	ISSUED FOR INFORMATION	CC	Rev 84	15.02.2020	ISSUED FOR INFORMATION	CC
Rev 85	15.02.2020	ISSUED FOR INFORMATION	CC	Rev 86	15.02.2020	ISSUED FOR INFORMATION	CC	Rev 87	15.02.2020	ISSUED FOR INFORMATION	CC	Rev 88	15.02.2020	ISSUED FOR INFORMATION	CC
Rev 89	15.02.2020	ISSUED FOR INFORMATION	CC	Rev 90	15.02.2020	ISSUED FOR INFORMATION	CC	Rev 91	15.02.2020	ISSUED FOR INFORMATION	CC	Rev 92	15.02.2020	ISSUED FOR INFORMATION	CC
Rev 93	15.02.2020	ISSUED FOR INFORMATION	CC	Rev 94	15.02.2020	ISSUED FOR INFORMATION	CC	Rev 95	15.02.2020	ISSUED FOR INFORMATION	CC	Rev 96	15.02.2020	ISSUED FOR INFORMATION	CC
Rev 97	15.02.2020	ISSUED FOR INFORMATION	CC	Rev 98	15.02.2020	ISSUED FOR INFORMATION	CC	Rev 99	15.02.2020	ISSUED FOR INFORMATION	CC	Rev 100	15.02.2020	ISSUED FOR INFORMATION	CC

1:100 SCALE @ A0
PRELIMINARY
NOT FOR CONSTRUCTION

ELENBERG FRASER
 LEVEL 1, 160 QUEEN STREET
 MELBOURNE VICTORIA 3000 AUSTRALIA
 TEL 461 3 9600 2260
 EMAIL MAIL@ELENBERGFRASER.COM
 WWW.ELENBERGFRASER.COM
 4884 17 100 100 024

NO. 15-23 KINGS WAY & 84-90 QUEENS BRIDGE ST, SOUTHBANK
TIME & PLACE

GENERAL ARRANGEMENT PLAN
LEVEL TO FLOOR PLAN
 Project Number: **20032**
 Drawing Number: **A0110**
 Revision: **J**
 TP



QUEENS BRIDGE STREET

KINGS WAY / KINGS WAY UNDERCROFT

POOL PAC 23m ²	HOTEL STAIR PRESS SUPPLY PLANT 15m ²	HOTEL TEMPERED OUTSIDE AIR 15m ²	COOLING TOWER PUMPS & COND. BOILER 15m ²	HOTEL COOLING TOWER PLANT 35m ²
------------------------------	--	---	--	---

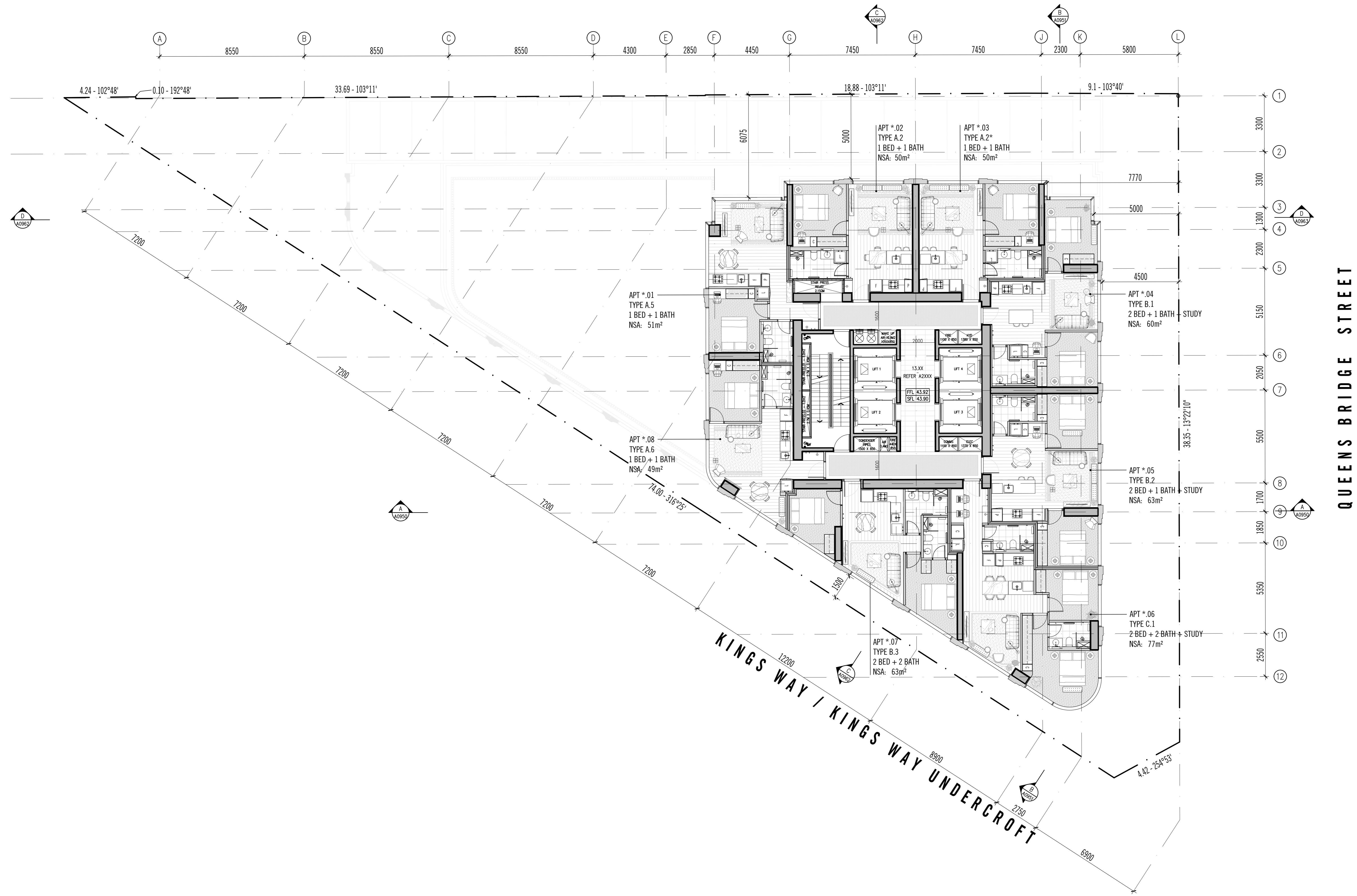
Rev No.	Date	Reason for Issue	Issued by	Rev No.	Date	Reason for Issue	Issued by	Rev No.	Date	Reason for Issue	Issued by	Rev No.	Date	Reason for Issue	Issued by
Rev 1	15.07.2020	ISSUED FOR INFORMATION	CC	Rev 2	15.07.2020	ISSUED FOR INFORMATION	CC	Rev 3	15.07.2020	ISSUED FOR INFORMATION	CC	Rev 4	15.07.2020	ISSUED FOR INFORMATION	CC
Rev 5	15.07.2020	ISSUED FOR INFORMATION	CC	Rev 6	15.07.2020	ISSUED FOR INFORMATION	CC	Rev 7	15.07.2020	ISSUED FOR INFORMATION	CC	Rev 8	15.07.2020	ISSUED FOR INFORMATION	CC
Rev 9	15.07.2020	ISSUED FOR INFORMATION	CC	Rev 10	15.07.2020	ISSUED FOR INFORMATION	CC	Rev 11	15.07.2020	ISSUED FOR INFORMATION	CC	Rev 12	15.07.2020	ISSUED FOR INFORMATION	CC
Rev 13	15.07.2020	ISSUED FOR INFORMATION	CC	Rev 14	15.07.2020	ISSUED FOR INFORMATION	CC	Rev 15	15.07.2020	ISSUED FOR INFORMATION	CC	Rev 16	15.07.2020	ISSUED FOR INFORMATION	CC
Rev 17	15.07.2020	ISSUED FOR INFORMATION	CC	Rev 18	15.07.2020	ISSUED FOR INFORMATION	CC	Rev 19	15.07.2020	ISSUED FOR INFORMATION	CC	Rev 20	15.07.2020	ISSUED FOR INFORMATION	CC
Rev 21	15.07.2020	ISSUED FOR INFORMATION	CC	Rev 22	15.07.2020	ISSUED FOR INFORMATION	CC	Rev 23	15.07.2020	ISSUED FOR INFORMATION	CC	Rev 24	15.07.2020	ISSUED FOR INFORMATION	CC
Rev 25	15.07.2020	ISSUED FOR INFORMATION	CC	Rev 26	15.07.2020	ISSUED FOR INFORMATION	CC	Rev 27	15.07.2020	ISSUED FOR INFORMATION	CC	Rev 28	15.07.2020	ISSUED FOR INFORMATION	CC
Rev 29	15.07.2020	ISSUED FOR INFORMATION	CC	Rev 30	15.07.2020	ISSUED FOR INFORMATION	CC	Rev 31	15.07.2020	ISSUED FOR INFORMATION	CC	Rev 32	15.07.2020	ISSUED FOR INFORMATION	CC
Rev 33	15.07.2020	ISSUED FOR INFORMATION	CC	Rev 34	15.07.2020	ISSUED FOR INFORMATION	CC	Rev 35	15.07.2020	ISSUED FOR INFORMATION	CC	Rev 36	15.07.2020	ISSUED FOR INFORMATION	CC
Rev 37	15.07.2020	ISSUED FOR INFORMATION	CC	Rev 38	15.07.2020	ISSUED FOR INFORMATION	CC	Rev 39	15.07.2020	ISSUED FOR INFORMATION	CC	Rev 40	15.07.2020	ISSUED FOR INFORMATION	CC
Rev 41	15.07.2020	ISSUED FOR INFORMATION	CC	Rev 42	15.07.2020	ISSUED FOR INFORMATION	CC	Rev 43	15.07.2020	ISSUED FOR INFORMATION	CC	Rev 44	15.07.2020	ISSUED FOR INFORMATION	CC
Rev 45	15.07.2020	ISSUED FOR INFORMATION	CC	Rev 46	15.07.2020	ISSUED FOR INFORMATION	CC	Rev 47	15.07.2020	ISSUED FOR INFORMATION	CC	Rev 48	15.07.2020	ISSUED FOR INFORMATION	CC
Rev 49	15.07.2020	ISSUED FOR INFORMATION	CC	Rev 50	15.07.2020	ISSUED FOR INFORMATION	CC	Rev 51	15.07.2020	ISSUED FOR INFORMATION	CC	Rev 52	15.07.2020	ISSUED FOR INFORMATION	CC
Rev 53	15.07.2020	ISSUED FOR INFORMATION	CC	Rev 54	15.07.2020	ISSUED FOR INFORMATION	CC	Rev 55	15.07.2020	ISSUED FOR INFORMATION	CC	Rev 56	15.07.2020	ISSUED FOR INFORMATION	CC
Rev 57	15.07.2020	ISSUED FOR INFORMATION	CC	Rev 58	15.07.2020	ISSUED FOR INFORMATION	CC	Rev 59	15.07.2020	ISSUED FOR INFORMATION	CC	Rev 60	15.07.2020	ISSUED FOR INFORMATION	CC
Rev 61	15.07.2020	ISSUED FOR INFORMATION	CC	Rev 62	15.07.2020	ISSUED FOR INFORMATION	CC	Rev 63	15.07.2020	ISSUED FOR INFORMATION	CC	Rev 64	15.07.2020	ISSUED FOR INFORMATION	CC
Rev 65	15.07.2020	ISSUED FOR INFORMATION	CC	Rev 66	15.07.2020	ISSUED FOR INFORMATION	CC	Rev 67	15.07.2020	ISSUED FOR INFORMATION	CC	Rev 68	15.07.2020	ISSUED FOR INFORMATION	CC
Rev 69	15.07.2020	ISSUED FOR INFORMATION	CC	Rev 70	15.07.2020	ISSUED FOR INFORMATION	CC	Rev 71	15.07.2020	ISSUED FOR INFORMATION	CC	Rev 72	15.07.2020	ISSUED FOR INFORMATION	CC
Rev 73	15.07.2020	ISSUED FOR INFORMATION	CC	Rev 74	15.07.2020	ISSUED FOR INFORMATION	CC	Rev 75	15.07.2020	ISSUED FOR INFORMATION	CC	Rev 76	15.07.2020	ISSUED FOR INFORMATION	CC
Rev 77	15.07.2020	ISSUED FOR INFORMATION	CC	Rev 78	15.07.2020	ISSUED FOR INFORMATION	CC	Rev 79	15.07.2020	ISSUED FOR INFORMATION	CC	Rev 80	15.07.2020	ISSUED FOR INFORMATION	CC
Rev 81	15.07.2020	ISSUED FOR INFORMATION	CC	Rev 82	15.07.2020	ISSUED FOR INFORMATION	CC	Rev 83	15.07.2020	ISSUED FOR INFORMATION	CC	Rev 84	15.07.2020	ISSUED FOR INFORMATION	CC
Rev 85	15.07.2020	ISSUED FOR INFORMATION	CC	Rev 86	15.07.2020	ISSUED FOR INFORMATION	CC	Rev 87	15.07.2020	ISSUED FOR INFORMATION	CC	Rev 88	15.07.2020	ISSUED FOR INFORMATION	CC
Rev 89	15.07.2020	ISSUED FOR INFORMATION	CC	Rev 90	15.07.2020	ISSUED FOR INFORMATION	CC	Rev 91	15.07.2020	ISSUED FOR INFORMATION	CC	Rev 92	15.07.2020	ISSUED FOR INFORMATION	CC
Rev 93	15.07.2020	ISSUED FOR INFORMATION	CC	Rev 94	15.07.2020	ISSUED FOR INFORMATION	CC	Rev 95	15.07.2020	ISSUED FOR INFORMATION	CC	Rev 96	15.07.2020	ISSUED FOR INFORMATION	CC
Rev 97	15.07.2020	ISSUED FOR INFORMATION	CC	Rev 98	15.07.2020	ISSUED FOR INFORMATION	CC	Rev 99	15.07.2020	ISSUED FOR INFORMATION	CC	Rev 100	15.07.2020	ISSUED FOR INFORMATION	CC

1:100 SCALE @ A0
PRELIMINARY
NOT FOR CONSTRUCTION

ELENBERG FRASER
 LEVEL 1, 160 QUEEN STREET
 MELBOURNE VICTORIA 3000 AUSTRALIA
 TEL: +61 3 9600 2260
 EMAIL: MAIL@ELENBERGFRASER.COM
 WWW.ELENBERGFRASER.COM
 AKA 17 160 160 176

NO. 15-23 KINGS WAY & 84-90 QUEENS BRIDGE ST, SOUTHBANK
LEVEL 11 FLOOR PLAN
TIME & PLACE

Project Number: **20032**
 Drawing Number: **A0111**
 Drawing Title: **TP**



Rev No.	Date	Reason for Issue	Issued by	Rev No.	Date	Reason for Issue	Issued by	Rev No.	Date	Reason for Issue	Issued by	Rev No.	Date	Reason for Issue	Issued by
Rev 1	21.07.2020	ISSUED FOR INFORMATION	CC	Rev 1	21.07.2020	ISSUED FOR INFORMATION	CC	Rev 1	21.07.2020	ISSUED FOR INFORMATION	CC	Rev 1	21.07.2020	ISSUED FOR INFORMATION	CC
Rev 2	01.08.2020	ISSUED FOR COUNCIL PRE-APPLICATION MEETING	CC	Rev 2	01.08.2020	ISSUED FOR COUNCIL PRE-APPLICATION MEETING	CC	Rev 2	01.08.2020	ISSUED FOR COUNCIL PRE-APPLICATION MEETING	CC	Rev 2	01.08.2020	ISSUED FOR COUNCIL PRE-APPLICATION MEETING	CC
Rev 3	21.08.2020	ISSUED FOR COUNCIL INFORMATION	CC	Rev 3	21.08.2020	ISSUED FOR COUNCIL INFORMATION	CC	Rev 3	21.08.2020	ISSUED FOR COUNCIL INFORMATION	CC	Rev 3	21.08.2020	ISSUED FOR COUNCIL INFORMATION	CC
Rev 4	21.08.2020	ISSUED FOR INFORMATION	CC	Rev 4	21.08.2020	ISSUED FOR INFORMATION	CC	Rev 4	21.08.2020	ISSUED FOR INFORMATION	CC	Rev 4	21.08.2020	ISSUED FOR INFORMATION	CC
Rev 5	21.08.2020	ISSUED FOR TOWN PLANNING	CC	Rev 5	21.08.2020	ISSUED FOR TOWN PLANNING	CC	Rev 5	21.08.2020	ISSUED FOR TOWN PLANNING	CC	Rev 5	21.08.2020	ISSUED FOR TOWN PLANNING	CC
Rev 6	21.08.2020	ISSUED FOR TOWN PLANNING - PRE RESPONSE	CC	Rev 6	21.08.2020	ISSUED FOR TOWN PLANNING - PRE RESPONSE	CC	Rev 6	21.08.2020	ISSUED FOR TOWN PLANNING - PRE RESPONSE	CC	Rev 6	21.08.2020	ISSUED FOR TOWN PLANNING - PRE RESPONSE	CC
Rev 7	21.08.2020	ISSUED FOR INFORMATION	CC	Rev 7	21.08.2020	ISSUED FOR INFORMATION	CC	Rev 7	21.08.2020	ISSUED FOR INFORMATION	CC	Rev 7	21.08.2020	ISSUED FOR INFORMATION	CC
Rev 8	21.08.2020	ISSUED FOR INFORMATION	CC	Rev 8	21.08.2020	ISSUED FOR INFORMATION	CC	Rev 8	21.08.2020	ISSUED FOR INFORMATION	CC	Rev 8	21.08.2020	ISSUED FOR INFORMATION	CC
Rev 9	21.08.2020	ISSUED FOR INFORMATION	CC	Rev 9	21.08.2020	ISSUED FOR INFORMATION	CC	Rev 9	21.08.2020	ISSUED FOR INFORMATION	CC	Rev 9	21.08.2020	ISSUED FOR INFORMATION	CC
Rev 10	21.08.2020	ISSUED FOR INFORMATION	CC	Rev 10	21.08.2020	ISSUED FOR INFORMATION	CC	Rev 10	21.08.2020	ISSUED FOR INFORMATION	CC	Rev 10	21.08.2020	ISSUED FOR INFORMATION	CC
Rev 11	21.08.2020	ISSUED FOR INFORMATION	CC	Rev 11	21.08.2020	ISSUED FOR INFORMATION	CC	Rev 11	21.08.2020	ISSUED FOR INFORMATION	CC	Rev 11	21.08.2020	ISSUED FOR INFORMATION	CC
Rev 12	21.08.2020	ISSUED FOR INFORMATION	CC	Rev 12	21.08.2020	ISSUED FOR INFORMATION	CC	Rev 12	21.08.2020	ISSUED FOR INFORMATION	CC	Rev 12	21.08.2020	ISSUED FOR INFORMATION	CC
Rev 13	04.04.2021	ISSUED FOR TOWN PLANNING (CONSOLIDATED SET)	CC	Rev 13	04.04.2021	ISSUED FOR TOWN PLANNING (CONSOLIDATED SET)	CC	Rev 13	04.04.2021	ISSUED FOR TOWN PLANNING (CONSOLIDATED SET)	CC	Rev 13	04.04.2021	ISSUED FOR TOWN PLANNING (CONSOLIDATED SET)	CC

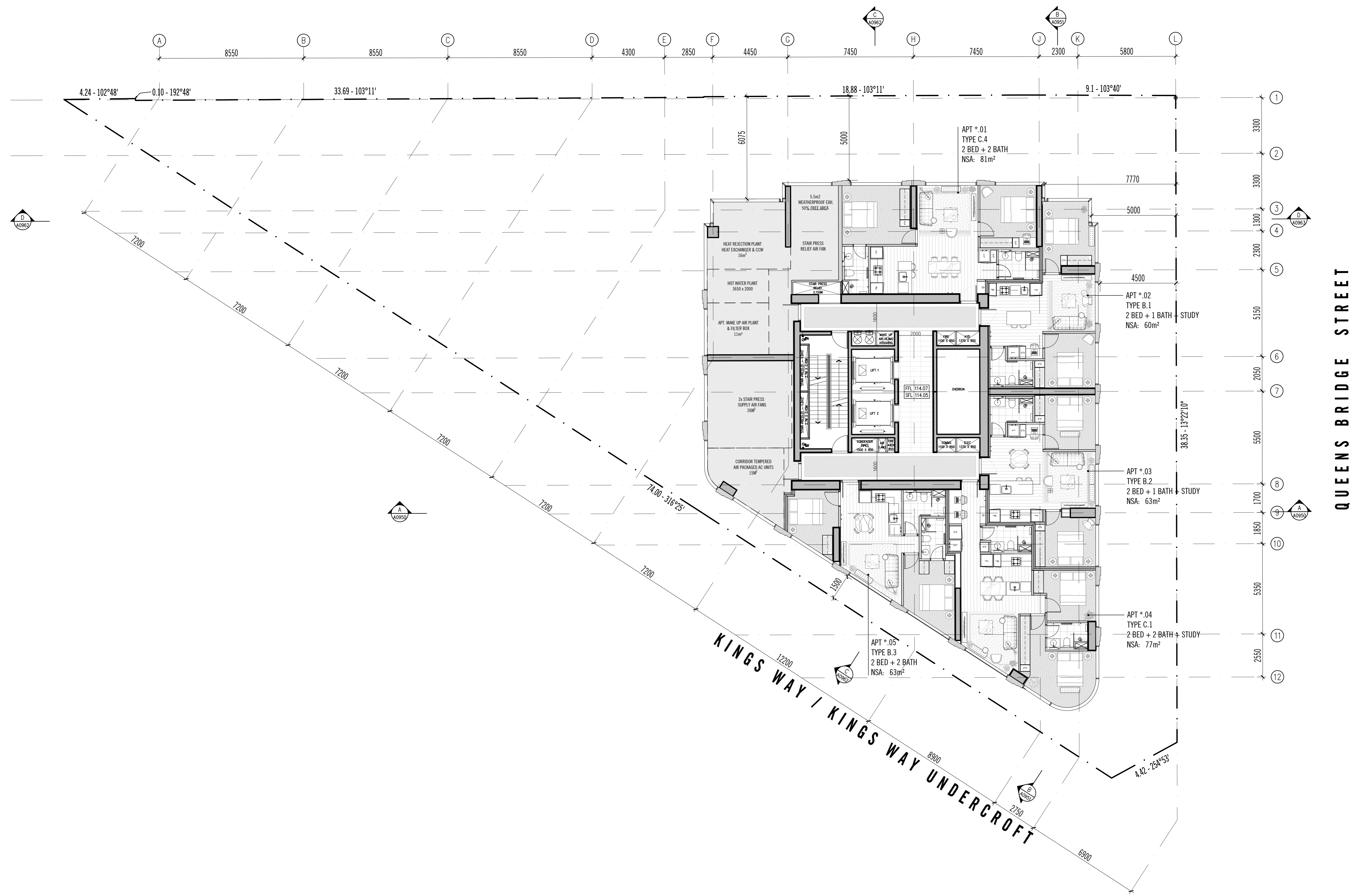
Qualities of use
 The drawings are to be used in accordance with the terms of the Conditions of Sale set out in the contract and subject to the provisions of the Building Act 2011 (Vic) and the Building Regulations 2018 (Vic).
 1. The drawings are not to be used for any purpose other than that for which they are intended.
 2. The drawings are not to be used for any purpose other than that for which they are intended.
 3. The drawings are not to be used for any purpose other than that for which they are intended.
 4. The drawings are not to be used for any purpose other than that for which they are intended.
 5. The drawings are not to be used for any purpose other than that for which they are intended.

1:100
 SCALE @ A0
PRELIMINARY
NOT FOR CONSTRUCTION

ELENBERG FRASER
 LEVEL 1, 160 QUEEN STREET
 MELBOURNE VICTORIA 3000 AUSTRALIA
 TEL: 461 3 9600 2260
 EMAIL: MAIL@ELENBERGFRASER.COM
 WWW.ELENBERGFRASER.COM
 ABA 17 148 174

Project Title
NO. 15-23 KINGS WAY & 84-90 QUEENS BRIDGE ST, SOUTHBANK
 Client
TIME & PLACE

Project Title
GENERAL ARRANGEMENT PLAN LEVEL 12-34 FLOOR PLAN
 Project Number
20032
 Drawing Number
A0112
 Drawing Status
TP



Rev No.	Date	Reason for Issue	Issued by	Rev No.	Date	Reason for Issue	Issued by	Rev No.	Date	Reason for Issue	Issued by	Rev No.	Date	Reason for Issue	Issued by
Rev 1	21.02.2020	ISSUED FOR INFORMATION	LM	Rev 2	01.03.2020	ISSUED FOR INFORMATION	LM	Rev 3	21.03.2020	ISSUED FOR INFORMATION	LM	Rev 4	28.03.2020	ISSUED FOR INFORMATION	LM
Rev 5	11.04.2020	ISSUED FOR TOWN PLANNING	LM	Rev 6	21.04.2020	ISSUED FOR TOWN PLANNING - SITE RESPONSE	LM	Rev 7	21.04.2020	ISSUED FOR INFORMATION	LM	Rev 8	11.05.2020	ISSUED FOR INFORMATION	LM
Rev 9	21.05.2020	ISSUED FOR INFORMATION	LM	Rev 10	22.05.2020	ISSUED FOR INFORMATION	LM	Rev 11	22.05.2020	ISSUED FOR INFORMATION	LM	Rev 12	22.05.2020	ISSUED FOR INFORMATION	LM
Rev 13	22.05.2020	ISSUED FOR INFORMATION	LM	Rev 14	22.05.2020	ISSUED FOR INFORMATION	LM	Rev 15	22.05.2020	ISSUED FOR INFORMATION	LM	Rev 16	22.05.2020	ISSUED FOR INFORMATION	LM
Rev 17	22.05.2020	ISSUED FOR INFORMATION	LM	Rev 18	22.05.2020	ISSUED FOR INFORMATION	LM	Rev 19	22.05.2020	ISSUED FOR INFORMATION	LM	Rev 20	22.05.2020	ISSUED FOR INFORMATION	LM
Rev 21	22.05.2020	ISSUED FOR INFORMATION	LM	Rev 22	22.05.2020	ISSUED FOR INFORMATION	LM	Rev 23	22.05.2020	ISSUED FOR INFORMATION	LM	Rev 24	22.05.2020	ISSUED FOR INFORMATION	LM
Rev 25	22.05.2020	ISSUED FOR INFORMATION	LM	Rev 26	22.05.2020	ISSUED FOR INFORMATION	LM	Rev 27	22.05.2020	ISSUED FOR INFORMATION	LM	Rev 28	22.05.2020	ISSUED FOR INFORMATION	LM
Rev 29	22.05.2020	ISSUED FOR INFORMATION	LM	Rev 30	22.05.2020	ISSUED FOR INFORMATION	LM	Rev 31	22.05.2020	ISSUED FOR INFORMATION	LM	Rev 32	22.05.2020	ISSUED FOR INFORMATION	LM
Rev 33	22.05.2020	ISSUED FOR INFORMATION	LM	Rev 34	22.05.2020	ISSUED FOR INFORMATION	LM	Rev 35	22.05.2020	ISSUED FOR INFORMATION	LM	Rev 36	22.05.2020	ISSUED FOR INFORMATION	LM
Rev 37	22.05.2020	ISSUED FOR INFORMATION	LM	Rev 38	22.05.2020	ISSUED FOR INFORMATION	LM	Rev 39	22.05.2020	ISSUED FOR INFORMATION	LM	Rev 40	22.05.2020	ISSUED FOR INFORMATION	LM
Rev 41	22.05.2020	ISSUED FOR INFORMATION	LM	Rev 42	22.05.2020	ISSUED FOR INFORMATION	LM	Rev 43	22.05.2020	ISSUED FOR INFORMATION	LM	Rev 44	22.05.2020	ISSUED FOR INFORMATION	LM
Rev 45	22.05.2020	ISSUED FOR INFORMATION	LM	Rev 46	22.05.2020	ISSUED FOR INFORMATION	LM	Rev 47	22.05.2020	ISSUED FOR INFORMATION	LM	Rev 48	22.05.2020	ISSUED FOR INFORMATION	LM
Rev 49	22.05.2020	ISSUED FOR INFORMATION	LM	Rev 50	22.05.2020	ISSUED FOR INFORMATION	LM	Rev 51	22.05.2020	ISSUED FOR INFORMATION	LM	Rev 52	22.05.2020	ISSUED FOR INFORMATION	LM
Rev 53	22.05.2020	ISSUED FOR INFORMATION	LM	Rev 54	22.05.2020	ISSUED FOR INFORMATION	LM	Rev 55	22.05.2020	ISSUED FOR INFORMATION	LM	Rev 56	22.05.2020	ISSUED FOR INFORMATION	LM
Rev 57	22.05.2020	ISSUED FOR INFORMATION	LM	Rev 58	22.05.2020	ISSUED FOR INFORMATION	LM	Rev 59	22.05.2020	ISSUED FOR INFORMATION	LM	Rev 60	22.05.2020	ISSUED FOR INFORMATION	LM
Rev 61	22.05.2020	ISSUED FOR INFORMATION	LM	Rev 62	22.05.2020	ISSUED FOR INFORMATION	LM	Rev 63	22.05.2020	ISSUED FOR INFORMATION	LM	Rev 64	22.05.2020	ISSUED FOR INFORMATION	LM
Rev 65	22.05.2020	ISSUED FOR INFORMATION	LM	Rev 66	22.05.2020	ISSUED FOR INFORMATION	LM	Rev 67	22.05.2020	ISSUED FOR INFORMATION	LM	Rev 68	22.05.2020	ISSUED FOR INFORMATION	LM
Rev 69	22.05.2020	ISSUED FOR INFORMATION	LM	Rev 70	22.05.2020	ISSUED FOR INFORMATION	LM	Rev 71	22.05.2020	ISSUED FOR INFORMATION	LM	Rev 72	22.05.2020	ISSUED FOR INFORMATION	LM
Rev 73	22.05.2020	ISSUED FOR INFORMATION	LM	Rev 74	22.05.2020	ISSUED FOR INFORMATION	LM	Rev 75	22.05.2020	ISSUED FOR INFORMATION	LM	Rev 76	22.05.2020	ISSUED FOR INFORMATION	LM
Rev 77	22.05.2020	ISSUED FOR INFORMATION	LM	Rev 78	22.05.2020	ISSUED FOR INFORMATION	LM	Rev 79	22.05.2020	ISSUED FOR INFORMATION	LM	Rev 80	22.05.2020	ISSUED FOR INFORMATION	LM
Rev 81	22.05.2020	ISSUED FOR INFORMATION	LM	Rev 82	22.05.2020	ISSUED FOR INFORMATION	LM	Rev 83	22.05.2020	ISSUED FOR INFORMATION	LM	Rev 84	22.05.2020	ISSUED FOR INFORMATION	LM
Rev 85	22.05.2020	ISSUED FOR INFORMATION	LM	Rev 86	22.05.2020	ISSUED FOR INFORMATION	LM	Rev 87	22.05.2020	ISSUED FOR INFORMATION	LM	Rev 88	22.05.2020	ISSUED FOR INFORMATION	LM
Rev 89	22.05.2020	ISSUED FOR INFORMATION	LM	Rev 90	22.05.2020	ISSUED FOR INFORMATION	LM	Rev 91	22.05.2020	ISSUED FOR INFORMATION	LM	Rev 92	22.05.2020	ISSUED FOR INFORMATION	LM
Rev 93	22.05.2020	ISSUED FOR INFORMATION	LM	Rev 94	22.05.2020	ISSUED FOR INFORMATION	LM	Rev 95	22.05.2020	ISSUED FOR INFORMATION	LM	Rev 96	22.05.2020	ISSUED FOR INFORMATION	LM
Rev 97	22.05.2020	ISSUED FOR INFORMATION	LM	Rev 98	22.05.2020	ISSUED FOR INFORMATION	LM	Rev 99	22.05.2020	ISSUED FOR INFORMATION	LM	Rev 100	22.05.2020	ISSUED FOR INFORMATION	LM

PRELIMINARY
NOT FOR CONSTRUCTION

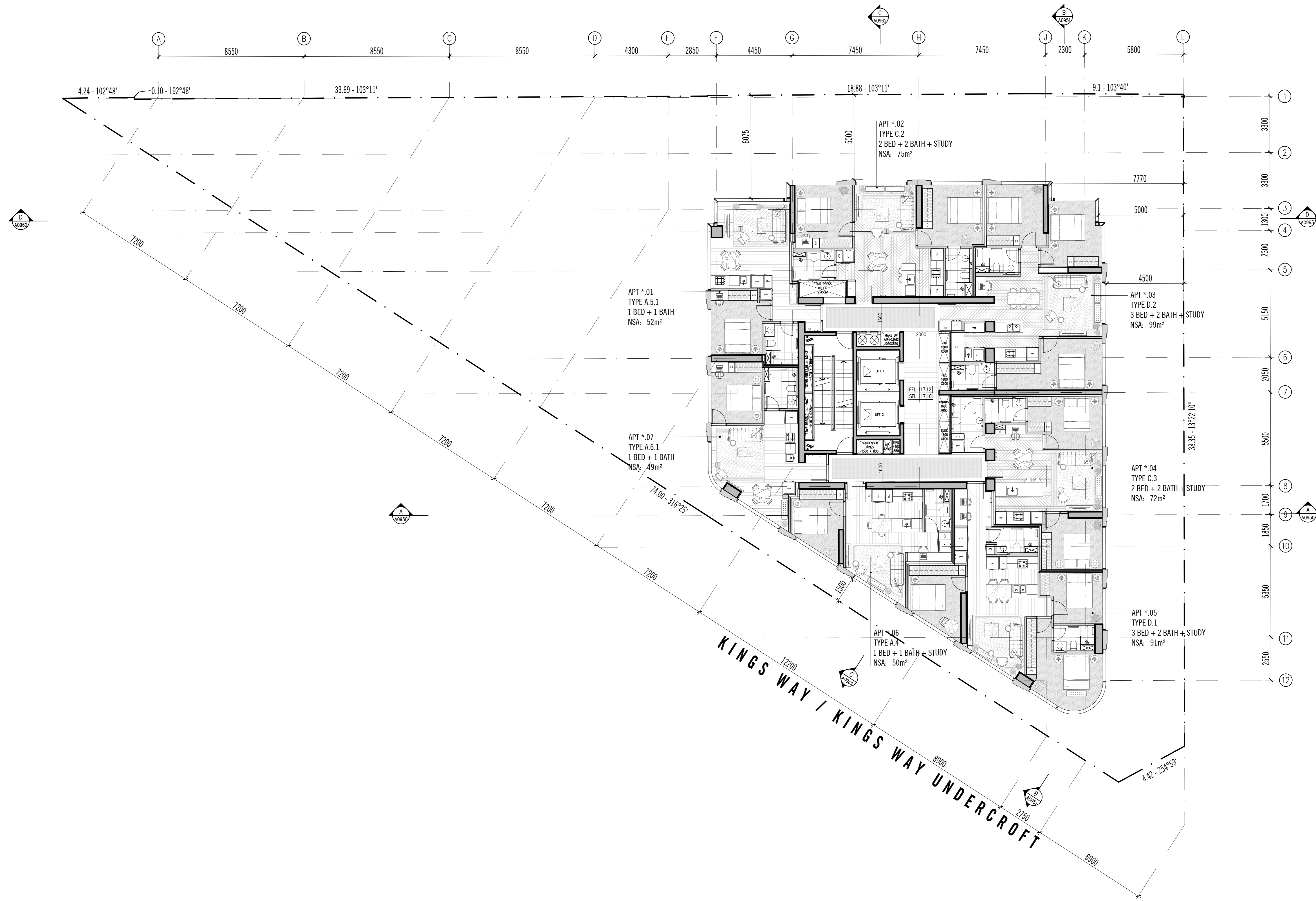
1:100 SCALE @ A0
 ELENBERG FRASER
 LEVEL 1, 160 QUEEN STREET
 MELBOURNE VICTORIA 3000 AUSTRALIA
 TEL: 461 3 9600 2260
 EMAIL: MAIL@ELENBERGFRASER.COM
 WWW.ELENBERGFRASER.COM
 ABA 17 146 146 176

GENERAL ARRANGEMENT PLAN
LEVEL 35 FLOOR PLAN

NO. 15-23 KINGS WAY & 84-90 QUEENS BRIDGE ST, SOUTHBANK

TIME & PLACE

Project Number: **20032**
 Drawing Number: **A0135**
 Drawing Title: **TP**



QUEENS BRIDGE STREET

KINGS WAY / KINGS WAY UNDERCROFT

Rev.	Date	Reason for Issue	Issued by	Rev.	Date	Reason for Issue	Issued by	Rev.	Date	Reason for Issue	Issued by
Rev 1	14.07.2020	ISSUED FOR INFORMATION	CG	Rev 1	14.07.2020	ISSUED FOR INFORMATION	CG	Rev 1	14.07.2020	ISSUED FOR INFORMATION	CG
Rev 2	03.08.2020	ISSUED FOR COUNCIL PRE-APPLICATION MEETING	CG	Rev 2	03.08.2020	ISSUED FOR COUNCIL PRE-APPLICATION MEETING	CG	Rev 2	03.08.2020	ISSUED FOR COUNCIL PRE-APPLICATION MEETING	CG
Rev 3	21.08.2020	ISSUED FOR COUNCIL INFORMATION	CG	Rev 3	21.08.2020	ISSUED FOR COUNCIL INFORMATION	CG	Rev 3	21.08.2020	ISSUED FOR COUNCIL INFORMATION	CG
Rev 4	28.08.2020	ISSUED FOR INFORMATION	CG	Rev 4	28.08.2020	ISSUED FOR INFORMATION	CG	Rev 4	28.08.2020	ISSUED FOR INFORMATION	CG
Rev 5	11.09.2020	ISSUED FOR TOWN PLANNING	CG	Rev 5	11.09.2020	ISSUED FOR TOWN PLANNING	CG	Rev 5	11.09.2020	ISSUED FOR TOWN PLANNING	CG
Rev 6	28.10.2020	ISSUED FOR TOWN PLANNING - FOR RESPONSE	CG	Rev 6	28.10.2020	ISSUED FOR TOWN PLANNING - FOR RESPONSE	CG	Rev 6	28.10.2020	ISSUED FOR TOWN PLANNING - FOR RESPONSE	CG
Rev 7	23.12.2020	ISSUED FOR INFORMATION	TR	Rev 7	23.12.2020	ISSUED FOR INFORMATION	TR	Rev 7	23.12.2020	ISSUED FOR INFORMATION	TR
Rev 8	10.02.2021	ISSUED FOR INFORMATION	TR	Rev 8	10.02.2021	ISSUED FOR INFORMATION	TR	Rev 8	10.02.2021	ISSUED FOR INFORMATION	TR
Rev 9	22.02.2021	ISSUED FOR INFORMATION	TR	Rev 9	22.02.2021	ISSUED FOR INFORMATION	TR	Rev 9	22.02.2021	ISSUED FOR INFORMATION	TR
Rev 10	12.02.2021	ISSUED FOR INFORMATION	TR	Rev 10	12.02.2021	ISSUED FOR INFORMATION	TR	Rev 10	12.02.2021	ISSUED FOR INFORMATION	TR
Rev 11	04.04.2021	ISSUED FOR TOWN PLANNING (CONSOLIDATED SET)	TR	Rev 11	04.04.2021	ISSUED FOR TOWN PLANNING (CONSOLIDATED SET)	TR	Rev 11	04.04.2021	ISSUED FOR TOWN PLANNING (CONSOLIDATED SET)	TR

PRELIMINARY
NOT FOR CONSTRUCTION

1:100
 SCALE @ A0

ELENBERG FRASER
 LEVEL 1, 160 QUEEN STREET
 MELBOURNE VICTORIA 3000 AUSTRALIA
 TEL 461 1 9600 2260
 EMAIL MAIL@ELENBERGFRASER.COM
 WWW.ELENBERGFRASER.COM
 ABB 17 168 176

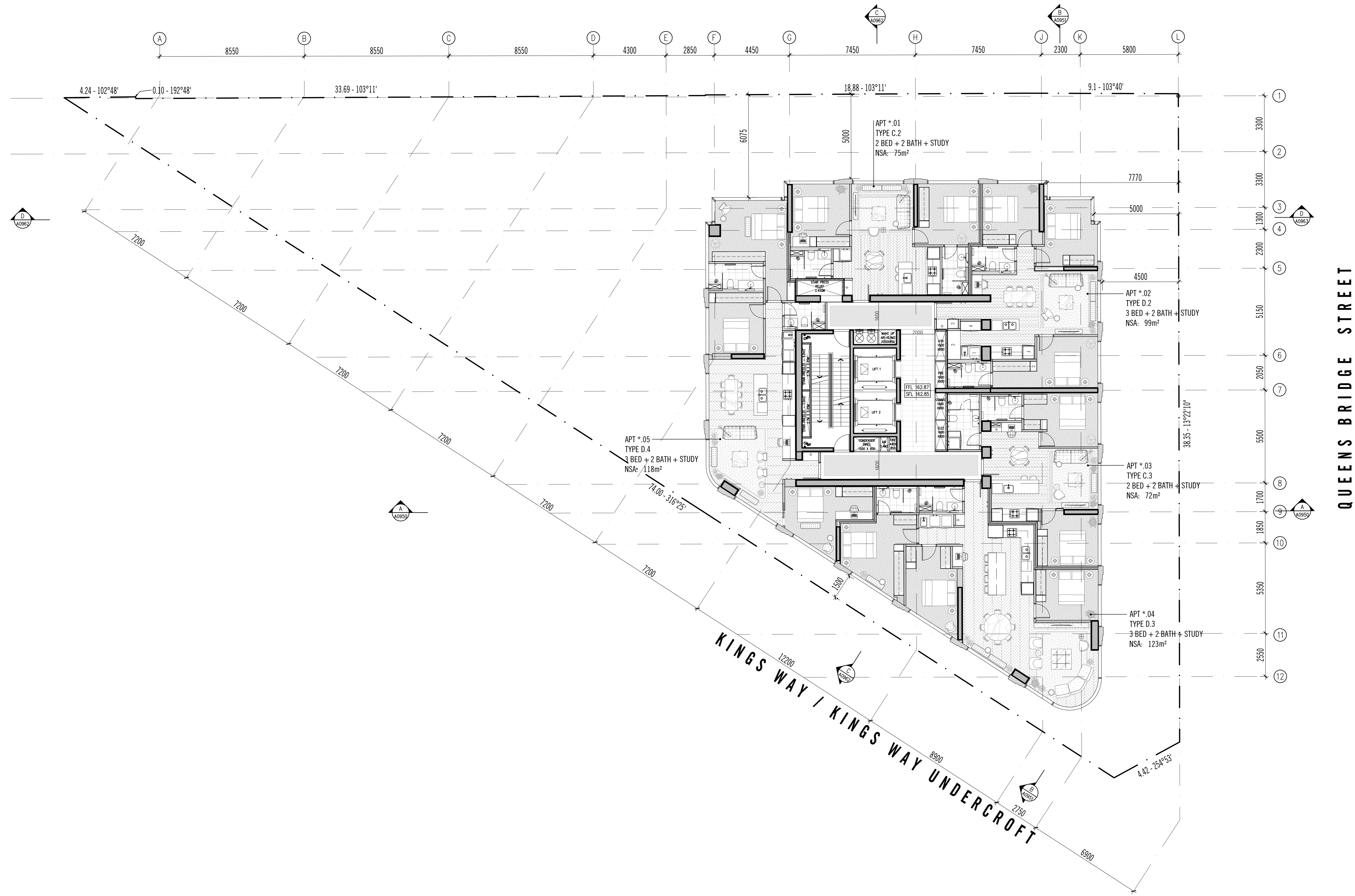
Project Title:
NO. 15-23 KINGS WAY & 84-90 QUEENS BRIDGE ST, SOUTHBANK

Client:
TIME & PLACE

Project Title:
GENERAL ARRANGEMENT PLAN LEVEL 36-50 FLOOR PLAN

Project Number:
20032

Drawing Number:
A0136



QUEENS BRIDGE STREET

KINGS WAY / KINGS WAY UNDERCROFT

Rev No.	Date	Reason for Issue	Issued by	Rev No.	Date	Reason for Issue	Issued by	Rev No.	Date	Reason for Issue	Issued by	Rev No.	Date	Reason for Issue	Issued by
Rev A	07.04.2020	ISSUED FOR CONCEPT PRE APPLICATION MEETING	CC												
Rev B	07.04.2020	ISSUED FOR INFORMATION	CC												
Rev C	08.04.2020	ISSUED FOR INFORMATION	LM												
Rev D	11.04.2020	ISSUED FOR TOWN PLANNING	CC												
Rev E	16.11.2020	ISSUED FOR TOWN PLANNING - 911 RESPONSE	TR												
Rev F	22.11.2020	ISSUED FOR INFORMATION	TR												
Rev G	22.11.2020	ISSUED FOR INFORMATION	TR												
Rev H	12.02.2021	ISSUED FOR INFORMATION	TR												
Rev I	04.04.2021	ISSUED FOR TOWN PLANNING (CONSOLIDATED SITE)	TR												

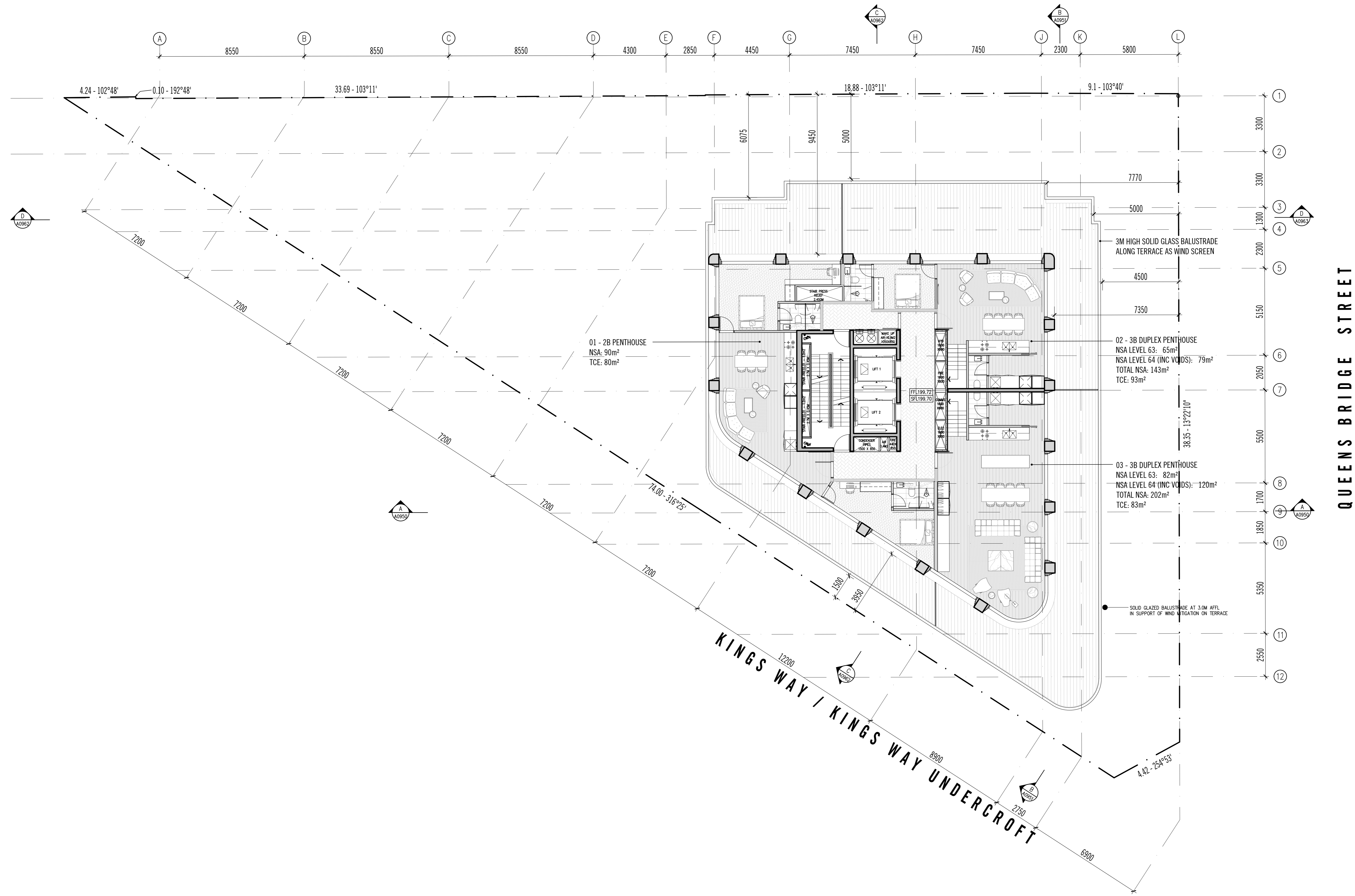
Qualities of use
 The drawings are to be used in accordance with the terms of the Conditions of Sale for the purchase and disposal of the land.
 1. The drawings are not to be used for any purpose other than that for which they are intended.
 2. The drawings are not to be used for any purpose other than that for which they are intended.
 3. The drawings are not to be used for any purpose other than that for which they are intended.
 4. The drawings are not to be used for any purpose other than that for which they are intended.
 5. The drawings are not to be used for any purpose other than that for which they are intended.

1:100
 SCALE@A0
PRELIMINARY
NOT FOR CONSTRUCTION

ELENBERG FRASER
 LEVEL 1, 160 QUEEN STREET
 MELBOURNE VICTORIA 3000 AUSTRALIA
 TEL 461 3 9600 2260
 EMAIL MAIL@ELENBERGFRASER.COM
 WWW.ELENBERGFRASER.COM
 ABB 17 148 148 174

Project Title
NO. 15-23 KINGS WAY & 84-90 QUEENS BRIDGE ST, SOUTHBANK
 Drawing Title
GENERAL ARRANGEMENT PLAN LEVEL 51 FLOOR PLAN
 Project Number
20032
 Drawing Number
A0151
 Drawing Status
TP

Client
TIME & PLACE
 Project Number
20032
 Drawing Number
A0151
 Drawing Status
TP



Rev No.	Date	Reason for Issue	Issued by	Rev No.	Date	Reason for Issue	Issued by	Rev No.	Date	Reason for Issue	Issued by	Rev No.	Date	Reason for Issue	Issued by
Rev A	07.04.2020	ISSUED FOR COUNCIL PRE APPLICATION MEETING	CC												
Rev B	07.04.2020	ISSUED FOR INFORMATION	CC												
Rev C	08.04.2020	ISSUED FOR INFORMATION	LM												
Rev D	11.04.2020	ISSUED FOR TOWN PLANNING	CC												
Rev E	16.11.2020	ISSUED FOR TOWN PLANNING - 911 RESPONSE	TR												
Rev F	22.11.2020	ISSUED FOR INFORMATION	TR												
Rev G	22.11.2021	ISSUED FOR INFORMATION	TR												
Rev H	12.02.2021	ISSUED FOR INFORMATION	TR												
Rev I	04.04.2021	ISSUED FOR TOWN PLANNING (CONSOLIDATED SITE)	TR												

1:100 SCALE@A0
PRELIMINARY
NOT FOR CONSTRUCTION

Report any discrepancies to the Architect for decision before proceeding with the work.

ELENBERG FRASER
LEVEL 1, 160 QUEEN STREET
MELBOURNE VICTORIA 3000 AUSTRALIA
TEL 461 3 9600 2260
EMAIL MAIL@ELENBERGFRASER.COM
WWW.ELENBERGFRASER.COM
ABA 17 144 144 174

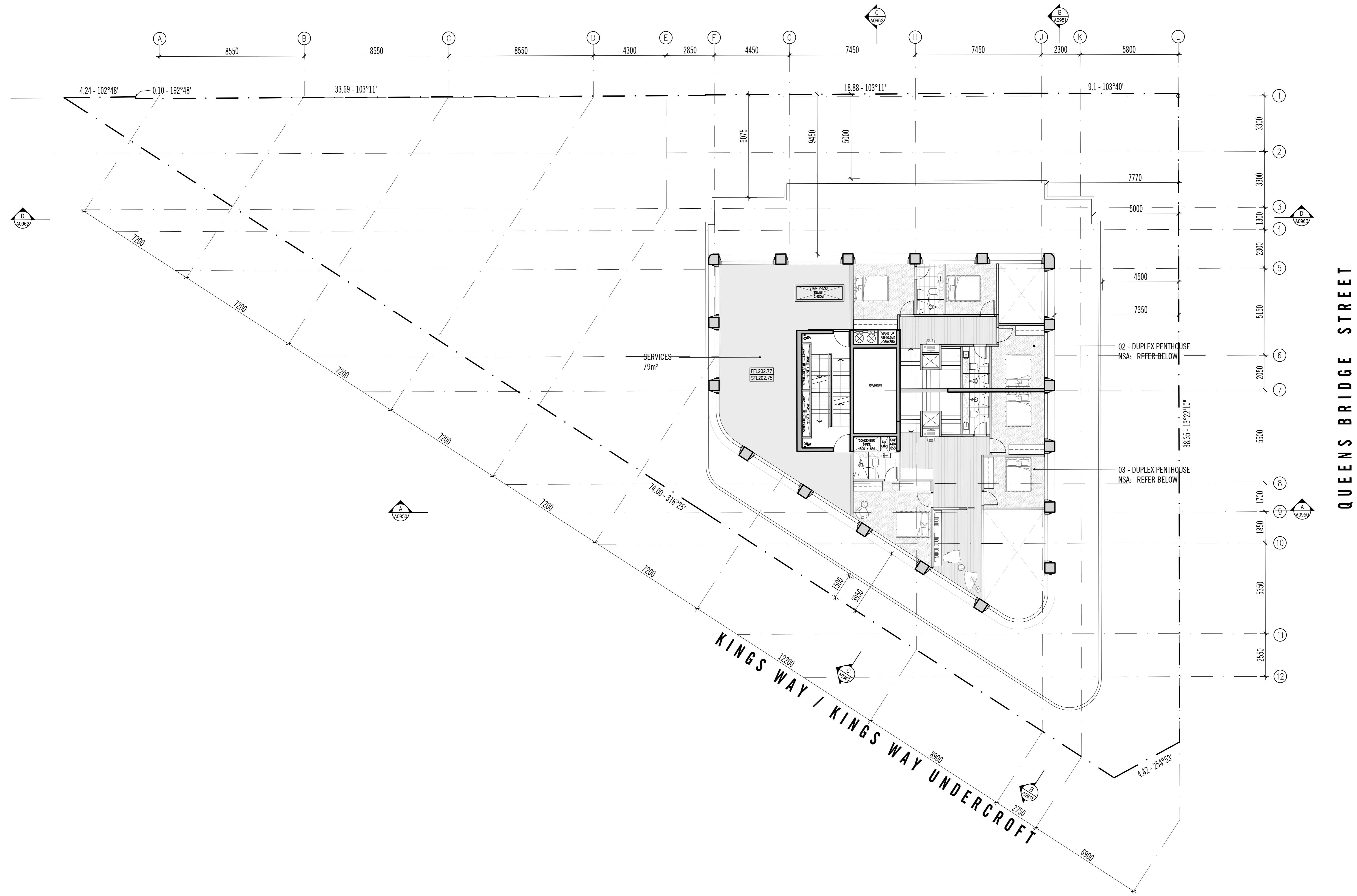
Project Title
NO. 15-23 KINGS WAY & 84-90 QUEENS BRIDGE ST, SOUTHBANK
Client
TIME & PLACE

Drawing Title
GENERAL ARRANGEMENT PLAN LEVEL 63 FLOOR PLAN

Project Number
20032

Drawing Number
A0163

Revision
J



Rev No.	Date	Reason for Issue	Issued by	Rev No.	Date	Reason for Issue	Issued by	Rev No.	Date	Reason for Issue	Issued by	Rev No.	Date	Reason for Issue	Issued by
Rev A	07.04.2020	ISSUED FOR CONCEPT PRE APPLICATION MEETING	CC												
Rev B	07.04.2020	ISSUED FOR INFORMATION	CC												
Rev C	08.04.2020	ISSUED FOR INFORMATION	LM												
Rev D	11.04.2020	ISSUED FOR TOWN PLANNING	CC												
Rev E	16.11.2020	ISSUED FOR TOWN PLANNING - 911 RESPONSE	TR												
Rev F	22.11.2020	ISSUED FOR INFORMATION	TR												
Rev G	22.11.2021	ISSUED FOR INFORMATION	TR												
Rev H	12.02.2021	ISSUED FOR INFORMATION	TR												
Rev I	04.04.2021	ISSUED FOR TOWN PLANNING (CONSOLIDATED SITE)	TR												

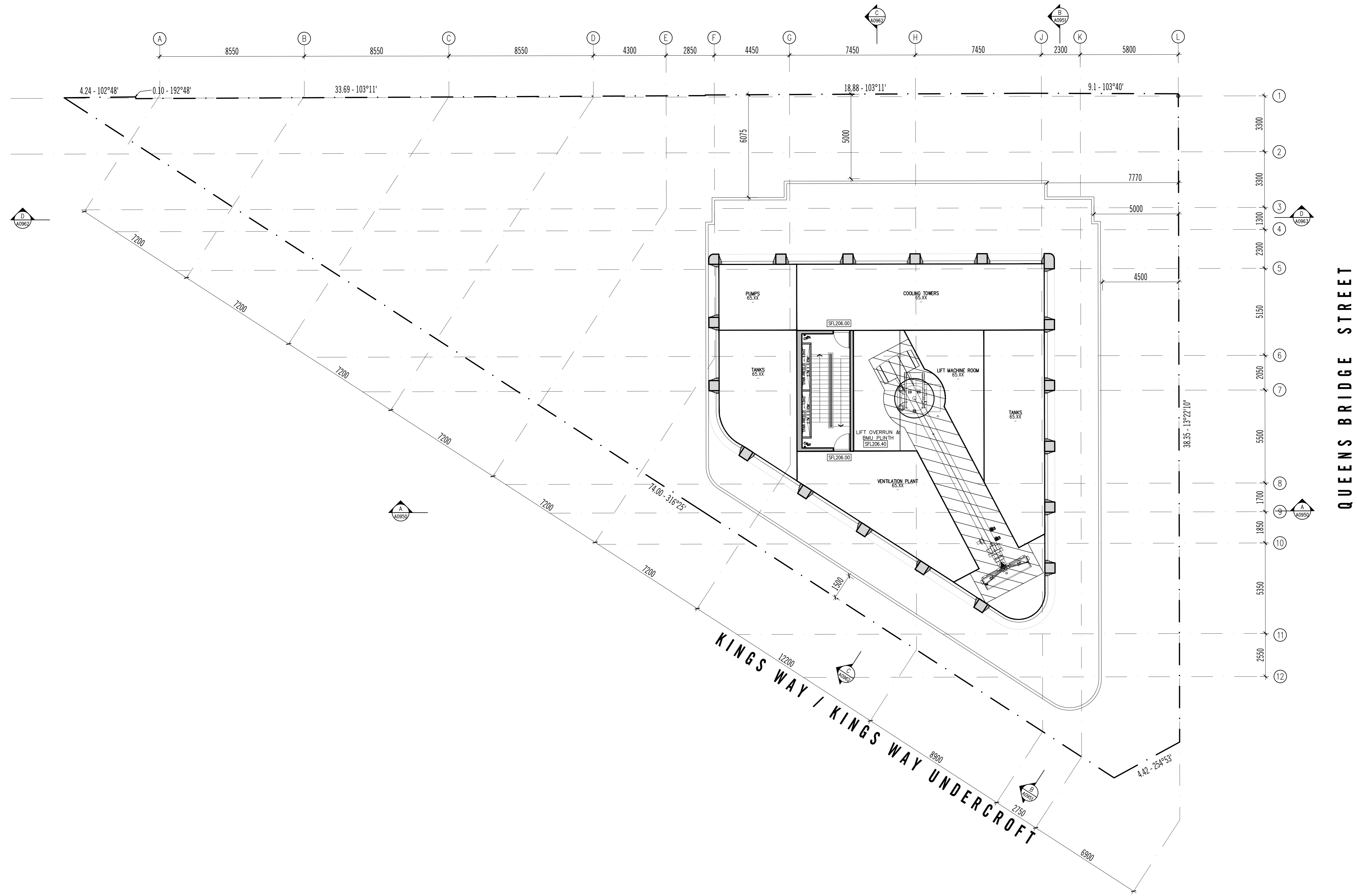
Conditions of use:
 This document may only be used as specified in the terms of the license agreement and for the purposes and scope of the project for which it was prepared and released by Elenberg Fraser and its authorized parties. Any other use, including the right to reproduce or to disseminate the content of this document, is strictly prohibited.
 1. This document is not to be used for any other purpose, including for the purposes of advertising, promotion, or any other use.
 2. This document is not to be used for any other purpose, including for the purposes of advertising, promotion, or any other use.
 3. This document is not to be used for any other purpose, including for the purposes of advertising, promotion, or any other use.
 4. This document is not to be used for any other purpose, including for the purposes of advertising, promotion, or any other use.
 5. This document is not to be used for any other purpose, including for the purposes of advertising, promotion, or any other use.

1:100
 SCALE@A0
PRELIMINARY
NOT FOR CONSTRUCTION
 Elenberg Fraser
 400 St Albans Rd
 St Albans, VIC 3023
 TEL: +61 3 9400 2260
 EMAIL: MAIL@ELENBERGFRASER.COM
 WWW.ELENBERGFRASER.COM
 A0164-1-100-100-100

ELENBERG FRASER
 LEVEL 1, 160 QUEEN STREET
 MELBOURNE VICTORIA 3000 AUSTRALIA
 TEL: +61 3 9400 2260
 EMAIL: MAIL@ELENBERGFRASER.COM
 WWW.ELENBERGFRASER.COM
 A0164-1-100-100-100

Project Title:
NO. 15-23 KINGS WAY & 84-90 QUEENS BRIDGE ST, SOUTHBANK
 Client:
TIME & PLACE

Drawing Title:
GENERAL ARRANGEMENT PLAN LEVEL 64 FLOOR PLAN
 Project Number:
20032
 Drawing Number:
A0164
 Revision:
J
 TP



QUEENS BRIDGE STREET

KINGS WAY / KINGS WAY UNDERCROFT

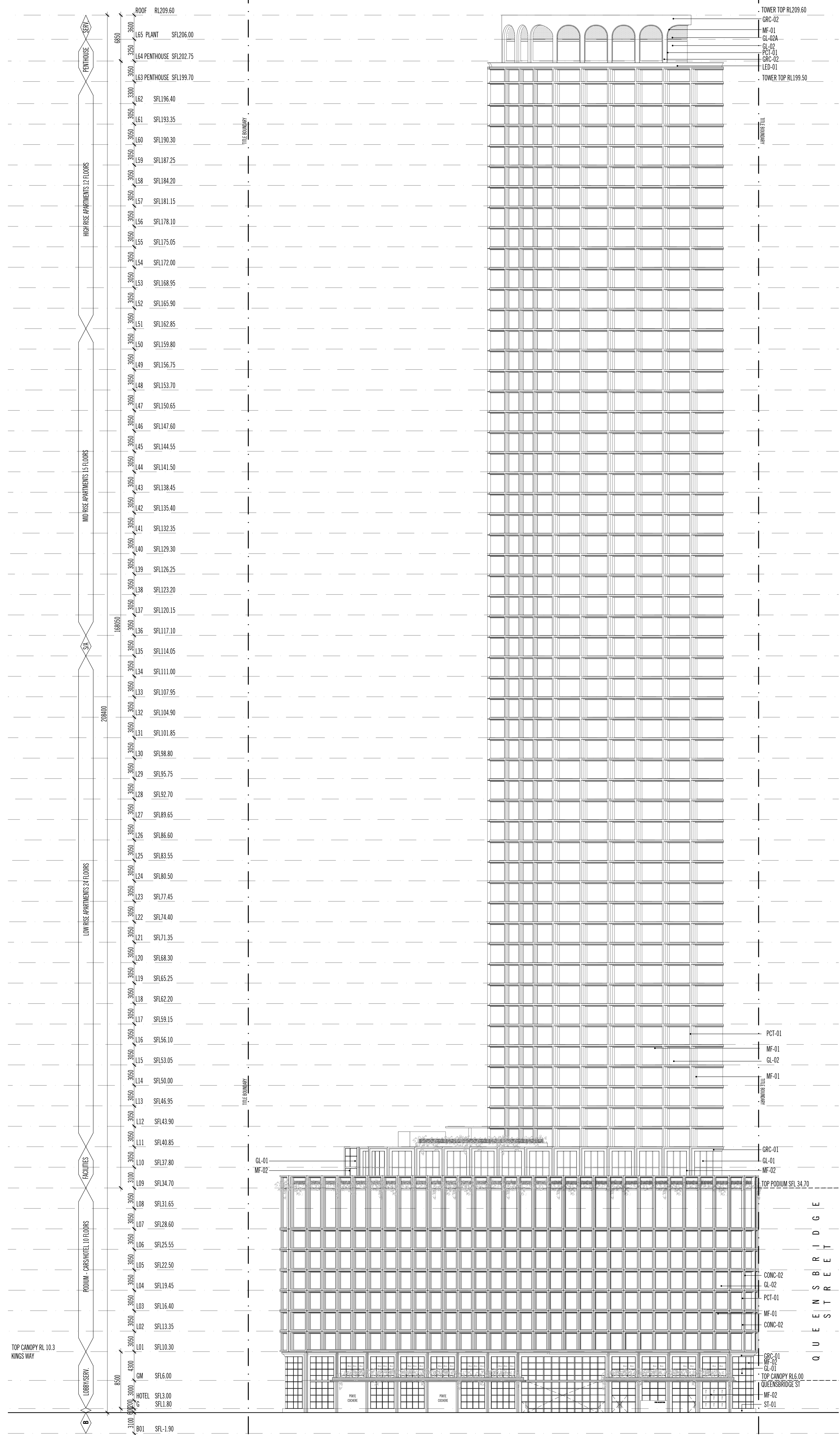
Rev No.	Date	Reason for Issue	Issued by	Rev No.	Date	Reason for Issue	Issued by	Rev No.	Date	Reason for Issue	Issued by
Rev A	21.02.2020	ISSUED FOR TOWN PLANNING	LW	Rev B	21.02.2020	ISSUED FOR INFORMATION	LW	Rev C	21.02.2020	ISSUED FOR INFORMATION	LW
Rev D	21.02.2020	ISSUED FOR TOWN PLANNING	LW	Rev E	21.02.2020	ISSUED FOR TOWN PLANNING - RFI RESPONSE	SA	Rev F	22.12.2020	ISSUED FOR INFORMATION	SA
Rev G	22.01.2021	ISSUED FOR INFORMATION	SA	Rev H	22.01.2021	ISSUED FOR INFORMATION	SA	Rev I	04.04.2021	ISSUED FOR TOWN PLANNING (CONSOLIDATED SITE)	SA

1:100 SCALE @ A0
PRELIMINARY
NOT FOR CONSTRUCTION

ELENBERG FRASER
 LEVEL 1, 160 QUEEN STREET
 MELBOURNE VICTORIA 3000 AUSTRALIA
 TEL 461 3 9600 2290
 EMAIL MAIL@ELENBERGFRASER.COM
 WWW.ELENBERGFRASER.COM
 4848 17 100 100 024

Project Title
NO. 15-23 KINGS WAY & 84-90 QUEENS BRIDGE ST, SOUTHBANK
 Drawing Title
GENERAL ARRANGEMENT PLAN ROOFTOP PLAN
 Project Number
20032
 Drawing Number
A0165

Client
TIME & PLACE
 Drawing Status
TP
 Revision
J



EXTERIOR FINISHES

	BAL-01 VERTICAL METAL BALUSTRADE
	BAL-02 BRONZE BALUSTRADE
	CONC-01 BLACK / BRONZE CONCRETE - (PRE-CAST OR IN-SITU)
	CONC-02 BLACK / BRONZE CONCRETE - (PRE-CAST OR GRC TEXTURED FINISH)
	CONC-03 CONCRETE (TIMBER FORMWORK FINISH)
	GRC-01 BLACK / BRONZE VOLCANIC TEXTURED GRC
	GRC-02 TEXTURED BLACK GRC
	GL-01 CLEAR LOW-IRON VISION GLAZING
	GL-02 FRONT GLAZED HIGH PERFORMANCE TEAL VISION GLAZING
	GL-02A FRONT GLAZED HIGH PERFORMANCE TEAL SPANDREL GLAZING
	GLS-01 FRONT GLAZED VERTICAL LOUVER
	GLS-04 CLEAR IMPACT PROOF LAMINATED CANOPY GLAZING
	GL-05 GLAZED FROSTED GLASS
	LVR-01 BLACK POWDERCOATED LINEAR SLOT LOUVRES
	LVR-02 BLACK POWDERCOATED ALUMINUM LOUVRES
	PNL-01 STAINLESS STEEL TENSION CABLES
	MF-01 BRONZE PVD METAL FINISH
	MF-02 BLACK STAINLESS STEEL METAL FINISH
	MF-03 BLACK PVD METAL FINISH
	MP-01 BRONZE CIRCULAR PERFORATED METAL MESH
	PCT-01 BLACK POWDERCOATED ALUMINUM
	ST-01 HONED NATURAL BLUESTONE
	RS-01 ROOF SHEETING
	LED-01 LIGHTING FEATURE

CODE	DESCRIPTION
SFL 3700	SLAB FINISH LEVEL
RL 3700	PROPOSED REDUCED LEVEL
3700 APL	ABOVE FINISHED FLOOR LEVEL
CH 3700	INDICATES PLASTERBOARD CEILING HEIGHT ABOVE STRUCTURAL SLAB LEVEL

GENERAL NOTES

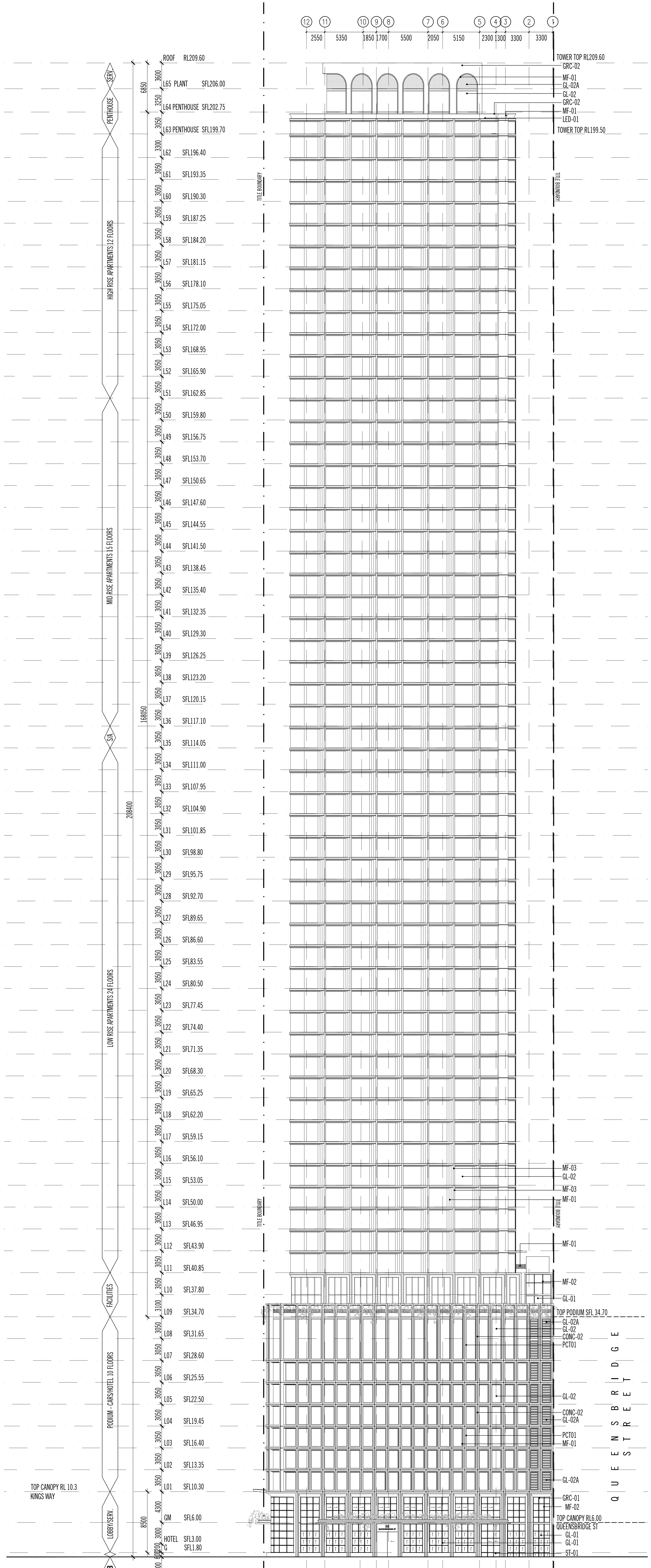
- BUILDING CONTRACTOR TO CONFIRM TITLE BOUNDARY WITH LAND SERVICES DOCUMENTATION.
- DRAWINGS TO BE READ IN CONJUNCTION WITH ELEMENTAL DESIGN SPECIFICATION BRIEF, ARCHITECTURAL SPECIFICATION, CIVIL, GEOTECHNICAL, STRUCTURAL, SERVICES, LANDSCAPE & OTHER ALL OTHER CONSULTANTS DOCUMENTATION.
- BUILDING CONTRACTOR TO NOTIFY ARCHITECT / SUPER INTENDENT OF ANY DISCREPANCY IN DOCUMENTATION & WAIT FOR INSTRUCTION PRIOR TO CONTINUING WITH THE WORK.
- DRAWING TO BE READ IN CONJUNCTION WITH SCHEDULES.
- BUILDER TO ENSURE PROTECTION OF ALL ADJACENT PROPERTIES PRIOR TO BEGINNING WORK.
- REFER TO ELEMENTAL DESIGN SPECIFICATION FOR FRAMING SYSTEM AND GLASS SPECIFICATION.

1:800
 SCALE
PRELIMINARY
NOT FOR CONSTRUCTION

ELDERBRO FRASER
 1/111 TAPSCOTT STREET
 MELBOURNE VIC 3000
 PH: 03 9493 7000
 WWW.ELDERBROFRASER.COM

NO. 15-23 KINGS WAY & 84-90 QUEENS BRIDGE ST, SOUTH YARRA
TIME & PLACE

ELIXIUMS
SOUTH ELEVATION
20032
AR900



EXTERIOR FINISHES	
	BAL-01 VERTICAL METAL BALUSTRADE
	BAL-02 BRONZE BALUSTRADE
	CONC-01 BLACK / BRONZE CONCRETE - (PRE-CAST OR IN-SITU)
	CONC-02 BLACK / BRONZE CONCRETE - (PRE-CAST OR GRC TEXTURED FINISH)
	CONC-03 CONCRETE (TIMBER FORMWORK FINISH)
	GRC-01 BLACK / BRONZE VOLCANIC TEXTURED GRC
	GRC-02 TEXTURED BLACK GRC
	GL-01 CLEAR LOW-IRON VISION GLAZING
	GL-02 FRONT GLAZED HIGH PERFORMANCE TEAL VISION GLAZING
	GL-02A FRONT GLAZED HIGH PERFORMANCE TEAL SPANDREL GLAZING
	GLS-03 FRONT GLAZED VERTICAL LOUVER
	GLS-04 CLEAR IMPACT PROOF LAMINATED CANOPY GLAZING
	GL-05 GLAZED FROSTED GLASS
	LW-01 BLACK POWDERCOATED LINEAR SLOT LOUVRES
	LW-02 BLACK POWDERCOATED ALUMINUM LOUVRES
	PNL-01 STAINLESS STEEL TENSION CABLES
	MF-01 BRONZE PVD METAL FINISH
	MF-02 BLACK STAINLESS STEEL METAL FINISH
	MF-03 BLACK PVD METAL FINISH
	MP-01 BRONZE CIRCULAR PERFORATED METAL MESH
	PCT-01 BLACK POWDERCOATED ALUMINUM
	ST-01 HONEYCOMB NATURAL BLUESTONE
	RS-01 ROOF SHEETING
	LED-01 LIGHTING FEATURE

CODE	DESCRIPTION
(SFL 3700)	SLAB FINISH LEVEL
(RL 3700)	PROPOSED REDUCED LEVEL
(S7000 AFL)	ABOVE FINISHED FLOOR LEVEL
(SH 3700)	INDICATES PLASTERBOARD CEILING HEIGHT ABOVE STRUCTURAL SLAB LEVEL

GENERAL NOTES	
1.	BUILDING CONTRACTOR TO CONFIRM TITLE BOUNDARY WITH LAND SURVEYORS DOCUMENTATION.
2.	DRAWINGS TO BE READ IN CONJUNCTION WITH ELEMENTAL DESIGN SPECIFICATION BRIEF, ARCHITECTURAL SPECIFICATION, CIVIL, GEOTECHNICAL, STRUCTURAL, SERVICES, LANDSCAPE & OTHER ALL OTHER CONSULTANTS DOCUMENTATION.
3.	BUILDING CONTRACTOR TO NOTIFY ARCHITECT/ SUPER INTENDENT OF ANY DISCREPANCY IN DOCUMENTATION & WAIT FOR INSTRUCTION PRIOR TO CONTINUING WITH THE WORK.
4.	DRAWING TO BE READ IN CONJUNCTION WITH SCHEDULES.
5.	BUILDER TO ENSURE PROTECTION OF ALL ADJACENT PROPERTIES PRIOR TO BEGINNING WORK.
6.	REFER TO ELEMENTAL DESIGN SPECIFICATION FOR FRAMING SYSTEM AND GLASS SPECIFICATION.

Project: **NO. 15-23 KINGS WAY & 84-90 QUEENS BRIDGE ST, SOUTHANK TIME & PLACE**

Scale: **1:800**

Phase: **PRELIMINARY NOT FOR CONSTRUCTION**

Client: **ELDERBRO FRASER**
 151 L. ELDERBRO STREET, SYDNEY NSW
 TEL: 02 9333 9999
 EMAIL: INFO@ELDERBROFRASER.COM
 WWW.ELDERBROFRASER.COM

Architect: **ELIADONS EAST ELEVATION**
 20032
 A901

1:1
1:2
1:5
1:10
1:20
1:50
1:100
1:200
1:500
1:1000
1:2000
1:5000
1:10000

DATE: 15/08/2023

BY: [Signature]

PROJECT: [Project Name]

SCALE: [Scale]

PHASE: [Phase]

CLIENT: [Client Name]

ARCHITECT: [Firm Name]