

# Decision Plans

6 April 2021



CROWN PROMENADE  
23 STOREY HOTEL

CROWN CONFERENCE  
CENTRE  
1-25 WHITEMAN STREET

CROWN CASINO ENTERTAINMENT  
COMPLEX

CROWN CASINO RETAIL  
PRECINCT

CROWN  
CARPARKING

CROWN  
METROPOL

BELLA HOTEL  
APARTMENTS  
248-254 CITY ROAD

256-258 CITY ROAD  
59 STOREY RESIDENTIAL TOWER  
UNDER CONSTRUCTION

268-270 CITY ROAD  
APPROVED 69 STOREY  
RESIDENTIAL TOWER

'THE ATRIUM'  
58 QUEENSBIDGE STREET  
TWO STOREY OFFICE

SUBJECT SITE  
NO. 15 - 23 KINGS WAY &  
84-90 QUEENSBIDGE ST, SOUTHBANK  
SITE AREA: 1408m<sup>2</sup>

QUEENSBIDGE STREET

KINGS WAY

129 QUEENSBIDGE STREET  
6 STOREY OFFICE

133 QUEENSBIDGE STREET  
2 STOREY RETAIL

CITY ROAD  
PARK

CITY ROAD

BOYD COMMUNITY  
HUB

132-136 KAVANAGH STREET  
APPROVED 25 STOREY  
RESIDENTIAL TOWER

BALSTON STREET

SOUTHBANK CENTRAL  
APARTMENTS  
1 BALSTON ST

EPIC APARTMENTS  
118 KAVANAGH STREET  
7-STOREY BUILDING

SOUTHBANK ONE  
174-184 CITY ROAD  
37-STOREY TOWER

SOUTHBANK TOWERS APARTMENTS  
63-85 QUEENSBIDGE STREET  
28-STOREY TOWER(S)

Rev No.	Date	Reason for Issue	Issued By	Rev No.	Date	Reason for Issue	Issued By	Rev No.	Date	Reason for Issue	Issued By
Rev A	07.08.2020	NOT SUBMITTED	CC	Rev B	15.08.2020	ISSUED FOR SERVICE PRE-APPLICATION MEETINGS	CC	Rev C	21.12.2020	ISSUED FOR TOWN PLANNING - PRE RESPONSE	TR
Rev D	22.12.2020	ISSUED FOR TOWN PLANNING - PRE RESPONSE	TR	Rev E	22.12.2020	ISSUED FOR TOWN PLANNING - PRE RESPONSE	TR	Rev F	22.12.2020	ISSUED FOR TOWN PLANNING - PRE RESPONSE	TR
Rev G	12.02.2021	ISSUED FOR INFORMATION	TR	Rev H	18.02.2021	ISSUED FOR TOWN PLANNING (CONSOLIDATED SITE)	TR	Rev I	18.02.2021	ISSUED FOR TOWN PLANNING (CONSOLIDATED SITE)	TR
Rev J	21.02.2021	ISSUED FOR TOWN PLANNING (CONSOLIDATED SITE)	TR	Rev K	21.02.2021	ISSUED FOR TOWN PLANNING (CONSOLIDATED SITE)	TR				

**Conditions of Use**

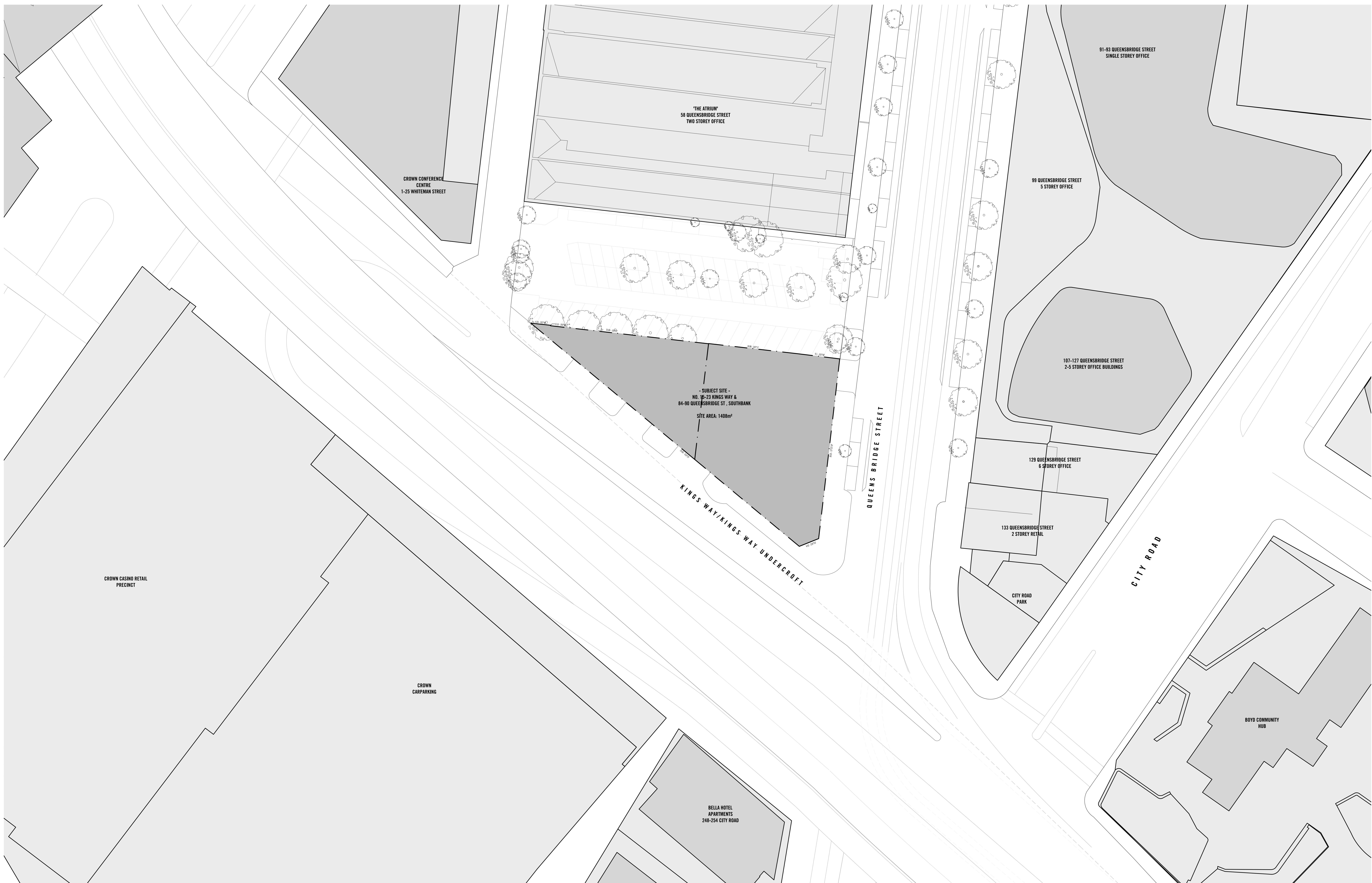
This document is to be used as a guide only. It is the responsibility of the user to ensure that the information contained herein is accurate and up-to-date. The user must verify the information with the relevant authorities and other stakeholders. The user must also ensure that the information is used in accordance with the applicable laws and regulations. The user must also ensure that the information is not used for any purpose other than that intended. The user must also ensure that the information is not used in any way that could be considered defamatory, libellous, or otherwise unlawful. The user must also ensure that the information is not used in any way that could be considered a breach of any applicable laws or regulations. The user must also ensure that the information is not used in any way that could be considered a breach of any applicable laws or regulations. The user must also ensure that the information is not used in any way that could be considered a breach of any applicable laws or regulations.

1:400  
SCALE @A0  
**PRELIMINARY  
NOT FOR CONSTRUCTION**

**ELENBERG FRASER**  
LEVEL 1, 150 QUEEN STREET  
MELBOURNE, VICTORIA, 3000 AUSTRALIA  
TEL: +61 3 9600 2290  
EMAIL: MAIL@ELENBERGFRASER.COM  
WWW.ELENBERGFRASER.COM  
AHS 17 148 126

Project Title  
**NO. 15-23 KINGS WAY & 84-90  
QUEENSBIDGE ST, SOUTHBANK**  
Drawing Title  
**SITE INFORMATION  
SITE CONTEXT PLAN**  
Drawing Number  
**20032**  
Drawing Sheet  
TP

Project Number  
**A0001**  
Revision  
**K**



- SUBJECT SITE -  
 NO. 15-23 KINGS WAY &  
 84-90 QUEENSBIDGE ST, SOUTHBANK  
 SITE AREA: 1408m<sup>2</sup>

Rev No.	Date	Reason for Issue	Issued By	Rev No.	Date	Reason for Issue	Issued By	Rev No.	Date	Reason for Issue	Issued By	Rev No.	Date	Reason for Issue	Issued By
Rev A	07.08.2020	NOT SUBMITTED	CS	Rev B	15.08.2020	ISSUED FOR SERVICE PRE-APPLICATION MEETING	CS	Rev C	21.11.2020	ISSUED FOR TOWN PLANNING PRE-RESPONSE	TR	Rev D	22.11.2020	ISSUED FOR INFORMATION	TR
Rev E	12.01.2021	ISSUED FOR INFORMATION	TR	Rev F	18.02.2021	ISSUED FOR TOWN PLANNING (CONSOLIDATED SITE)	TR	Rev G	23.05.2021	ISSUED FOR PRE-RESPONSE (CONSOLIDATED SITE)	TR				

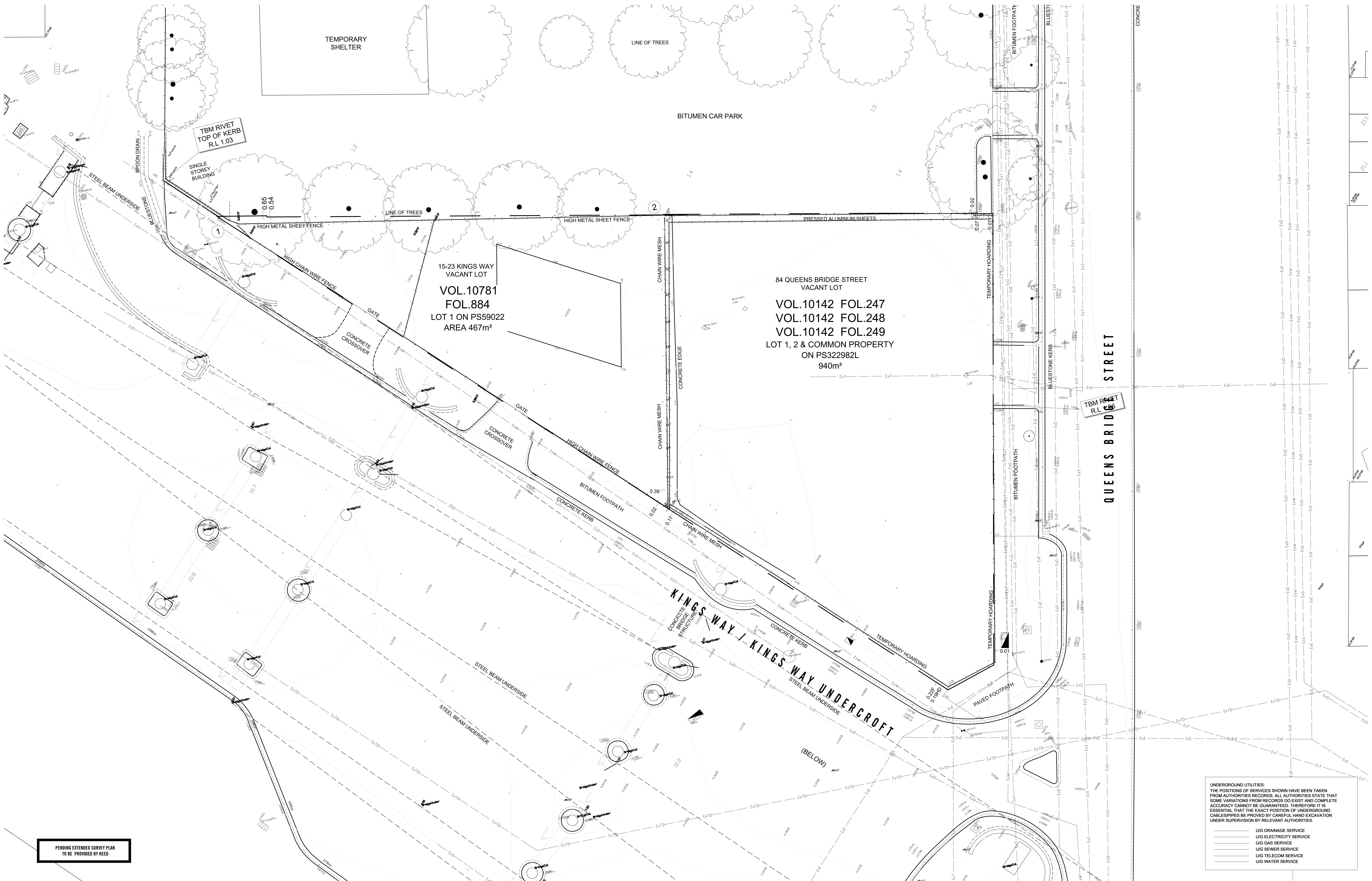
Conditions of use:  
 This document is to be used in accordance with the terms of the Conditions of Use set out in the separate document of the same name. It is not to be used for any other purpose without the prior written consent of Elenberg Fraser. The design and construction of any building or structure shall be in accordance with the relevant Australian Standards and the relevant Building Code of Australia. The design and construction of any building or structure shall be in accordance with the relevant Australian Standards and the relevant Building Code of Australia. The design and construction of any building or structure shall be in accordance with the relevant Australian Standards and the relevant Building Code of Australia.

1:250  
 SCALE @ A0  
**PRELIMINARY**  
**NOT FOR CONSTRUCTION**

**ELENBERG FRASER**  
 LEVEL 1, 150 QUEEN STREET  
 MELBOURNE VICTORIA 3000 AUSTRALIA  
 TEL +61 3 9600 2290  
 EMAIL MAIL@ELENBERGFRASER.COM  
 WWW.ELENBERGFRASER.COM  
 AHS 17 148 126

Project Title  
**NO. 15-23 KINGS WAY & 84-90 QUEENSBIDGE ST, SOUTHBANK**  
 Client  
**TIME & PLACE**

Drawing Title  
**SITE INFORMATION SITE CONTEXT PLAN**  
 Project Number  
**20032**  
 Drawing Sheet  
**TP**  
 Drawing Number  
**A0002**  
 Revision  
**K**



PENDING EXTENDED SURVEY PLAN TO BE PROVIDED BY REED

UNDERGROUND UTILITIES:  
 THE POSITIONS OF SERVICES SHOWN HAVE BEEN TAKEN FROM AUTHORITIES RECORDS. ALL AUTHORITIES STATE THAT SOME VARIATIONS FROM RECORDS DO EXIST AND COMPLETE ACCURACY CANNOT BE GUARANTEED. THEREFORE IT IS ESSENTIAL THAT THE EXACT POSITION OF UNDERGROUND CABLES/PIPES BE PROVIDED BY CAREFUL HAND EXCAVATION UNDER SUPERVISION BY RELEVANT AUTHORITIES.

- UIG DRAINAGE SERVICE
- UIG ELECTRICITY SERVICE
- UIG GAS SERVICE
- UIG SEWER SERVICE
- UIG TELECOM SERVICE
- UIG WATER SERVICE

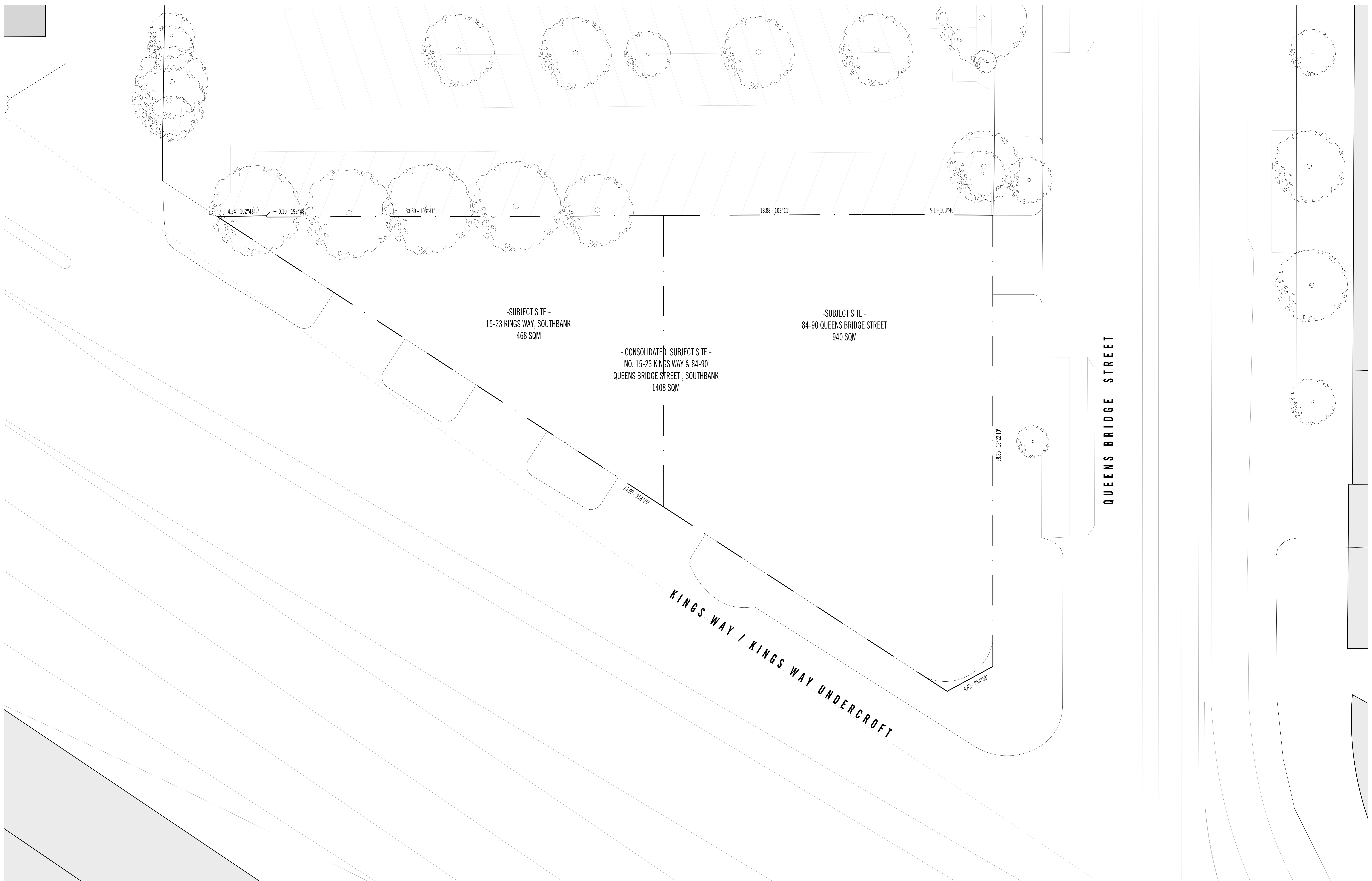
Rev No.	Date	Reason for Issue	Issued By	Rev No.	Date	Reason for Issue	Issued By	Rev No.	Date	Reason for Issue	Issued By	Rev No.	Date	Reason for Issue	Issued By
Rev A	07.08.2020	NOT SUBMITTED	CS	Rev B	15.08.2020	ISSUED FOR SERVICE PRE-APPLICATION MEETING	CS	Rev C	21.12.2020	ISSUED FOR TOWN PLANNING PRE-RESPONSE	TR	Rev D	22.12.2020	ISSUED FOR TOWN PLANNING PRE-RESPONSE	TR
Rev E	22.12.2020	ISSUED FOR TOWN PLANNING PRE-RESPONSE	TR	Rev F	22.12.2020	ISSUED FOR TOWN PLANNING PRE-RESPONSE	TR	Rev G	22.12.2020	ISSUED FOR TOWN PLANNING PRE-RESPONSE	TR	Rev H	22.12.2020	ISSUED FOR TOWN PLANNING PRE-RESPONSE	TR
Rev I	22.12.2020	ISSUED FOR TOWN PLANNING PRE-RESPONSE	TR	Rev J	22.12.2020	ISSUED FOR TOWN PLANNING PRE-RESPONSE	TR	Rev K	22.12.2020	ISSUED FOR TOWN PLANNING PRE-RESPONSE	TR	Rev L	22.12.2020	ISSUED FOR TOWN PLANNING PRE-RESPONSE	TR

1:100  
 SCALE: A0  
**PRELIMINARY**  
**NOT FOR CONSTRUCTION**

**ELENBERG FRASER**  
 LEVEL 1, 350 QUEEN STREET  
 MELBOURNE VICTORIA 3000 AUSTRALIA  
 TEL: 461 3 9600 2290  
 EMAIL: MAIL@ELENBERGFRASER.COM  
 WWW.ELENBERGFRASER.COM

**NO. 15-23 KINGS WAY & 84-90 QUEENS BRIDGE ST, SOUTHBANK**  
**TIME & PLACE**

**SITE INFORMATION**  
**EXISTING CONDITIONS - SURVEY PLAN**  
 Project Number: **20032**  
 Drawing Number: **A0003**  
 Revision: **K**



Rev No.	Date	Reason for Issue	Issued by	Rev No.	Date	Reason for Issue	Issued by	Rev No.	Date	Reason for Issue	Issued by	Rev No.	Date	Reason for Issue	Issued by	
Rev A	07.08.2020	NOT SUBMITTED	CC	Rev B	11.03.2020	ISSUED FOR TOWN PLANNING	CC	Rev C	20.11.2020	ISSUED FOR TOWN PLANNING - WEI RESPONSE	TR	Rev D	22.12.2020	ISSUED FOR INFORMATION	TR	
Rev E	12.02.2021	ISSUED FOR INFORMATION	TR	Rev F	18.02.2021	ISSUED FOR TOWN PLANNING (CONSOLIDATED SITE)	TR	Rev G	21.05.2021	ISSUED FOR WEI RESPONSE (CONSOLIDATED SITE)	WE					

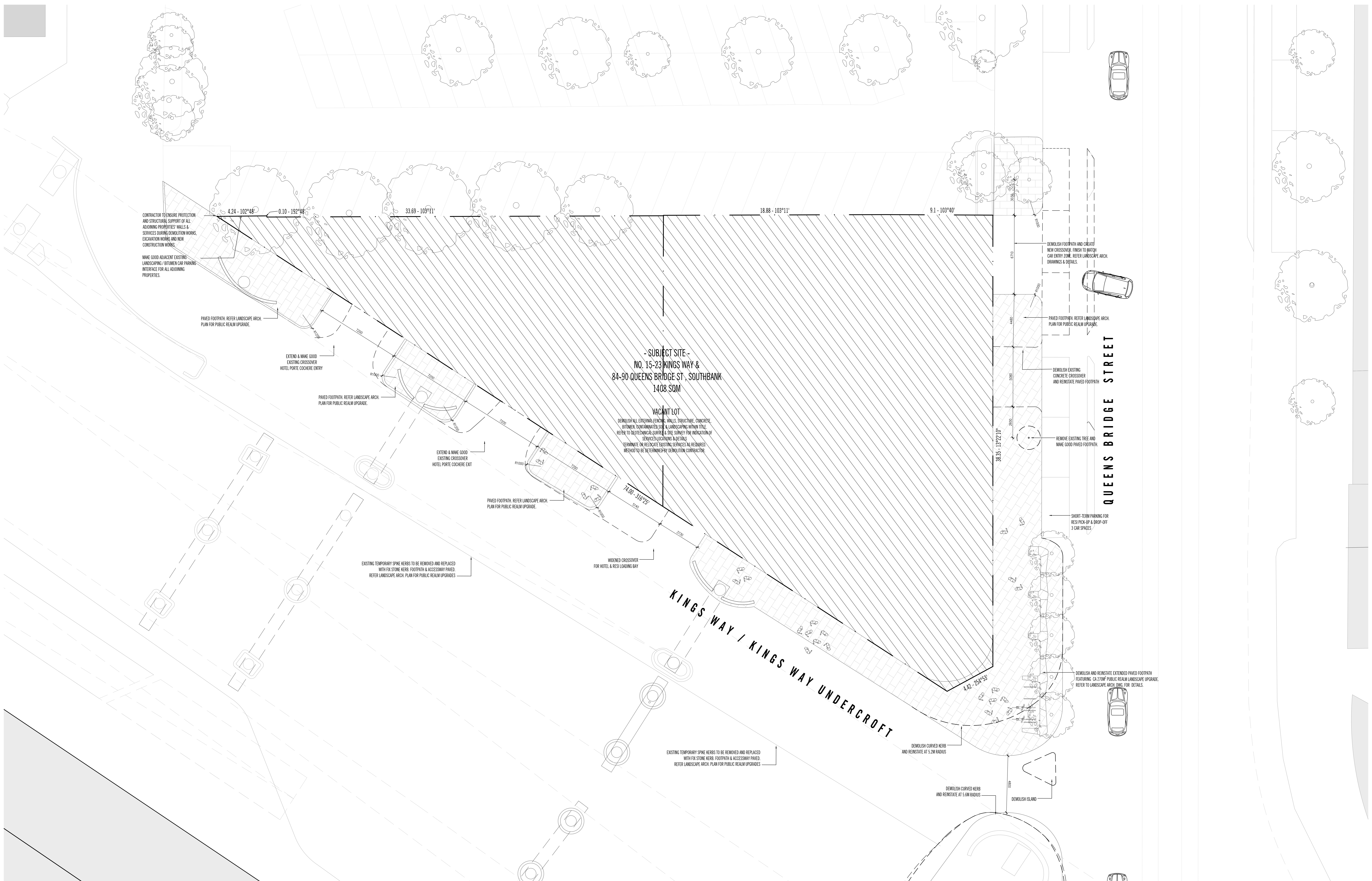
Conditions of use:  
 This document is to be used in accordance with the terms of the Conditions of Sale for the purchase and/or sale of the land.  
 It is not to be used for any other purpose without the prior written consent of Elenberg Fraser.  
 It is not to be used for any other purpose without the prior written consent of Elenberg Fraser.  
 It is not to be used for any other purpose without the prior written consent of Elenberg Fraser.  
 It is not to be used for any other purpose without the prior written consent of Elenberg Fraser.

1:100  
 SCALE @ A0  
**PRELIMINARY**  
**NOT FOR CONSTRUCTION**  
 Elenberg Fraser  
 400 St Albans Road  
 St Albans, VIC 3023  
 TEL: +61 3 9600 2260  
 EMAIL: MAIL@ELENBERGFRASER.COM  
 WWW.ELENBERGFRASER.COM

**ELENBERG FRASER**  
 LEVEL 1, 160 QUEEN STREET  
 MELBOURNE, VICTORIA, 3000, AUSTRALIA  
 TEL: +61 3 9600 2260  
 EMAIL: MAIL@ELENBERGFRASER.COM  
 WWW.ELENBERGFRASER.COM

Project Title:  
**NO. 15-23 KINGS WAY & 84-90 QUEENS BRIDGE ST, SOUTHBANK**  
 Drawing Title:  
**SITE INFORMATION TITLE PLAN**  
 Project Number:  
**20032**  
 Drawing Sheet:  
**TP**

Project Title:  
**NO. 15-23 KINGS WAY & 84-90 QUEENS BRIDGE ST, SOUTHBANK**  
 Drawing Title:  
**SITE INFORMATION TITLE PLAN**  
 Project Number:  
**20032**  
 Drawing Sheet:  
**TP**  
 Drawing Number:  
**A0004**  
 Revision:  
**K**  
 May 21, 2021 - 6:30pm



Rev No.	Date	Reason for Issue	Issued by	Rev No.	Date	Reason for Issue	Issued by	Rev No.	Date	Reason for Issue	Issued by	Rev No.	Date	Reason for Issue	Issued by
Rev A	21.11.2020	NET SUBMITTED	TM	Rev B	21.11.2020	ISSUED FOR TOWN PLANNING - NET RESPONSE	TM	Rev C	22.12.2020	ISSUED FOR INFORMATION	TM	Rev D	12.02.2021	NET SUBMITTED	TM
Rev E	19.02.2021	ISSUED FOR TOWN PLANNING (CONSOLIDATED SITE)	TM	Rev F	21.03.2021	ISSUED FOR BV RESPONSE (CONSOLIDATED SITE)	TM	Rev G				Rev H			

Conditions of use:  
 1. This document is to be used in accordance with the terms of the Conditions of Sale for the project and is not to be used for any other purpose.  
 2. This document is not to be used as a basis for any other design or construction work.  
 3. The architect shall not be responsible for any errors or omissions in this document or any drawings or specifications prepared by others.  
 4. The architect shall not be responsible for any delays or interruptions to the project caused by others.  
 5. The architect shall not be responsible for any costs or expenses incurred by others in connection with the project.  
 6. The architect shall not be responsible for any claims or damages arising from the use of this document or any drawings or specifications prepared by others.  
 7. The architect shall not be responsible for any claims or damages arising from the use of this document or any drawings or specifications prepared by others.  
 8. The architect shall not be responsible for any claims or damages arising from the use of this document or any drawings or specifications prepared by others.  
 9. The architect shall not be responsible for any claims or damages arising from the use of this document or any drawings or specifications prepared by others.  
 10. The architect shall not be responsible for any claims or damages arising from the use of this document or any drawings or specifications prepared by others.

1:100  
 SCALE @ A0  
**PRELIMINARY**  
**NOT FOR CONSTRUCTION**

**ELENBERG FRASER**  
 LEVEL 1, 160 QUEEN STREET  
 MELBOURNE, VICTORIA, 3000, AUSTRALIA  
 TEL: +61 3 9600 2260  
 EMAIL: MAIL@ELENBERGFRASER.COM  
 WWW.ELENBERGFRASER.COM  
 AHS 17 100 100 016

Project Title:  
**NO. 15-23 KINGS WAY & 84-90 QUEENS BRIDGE ST, SOUTHBANK**

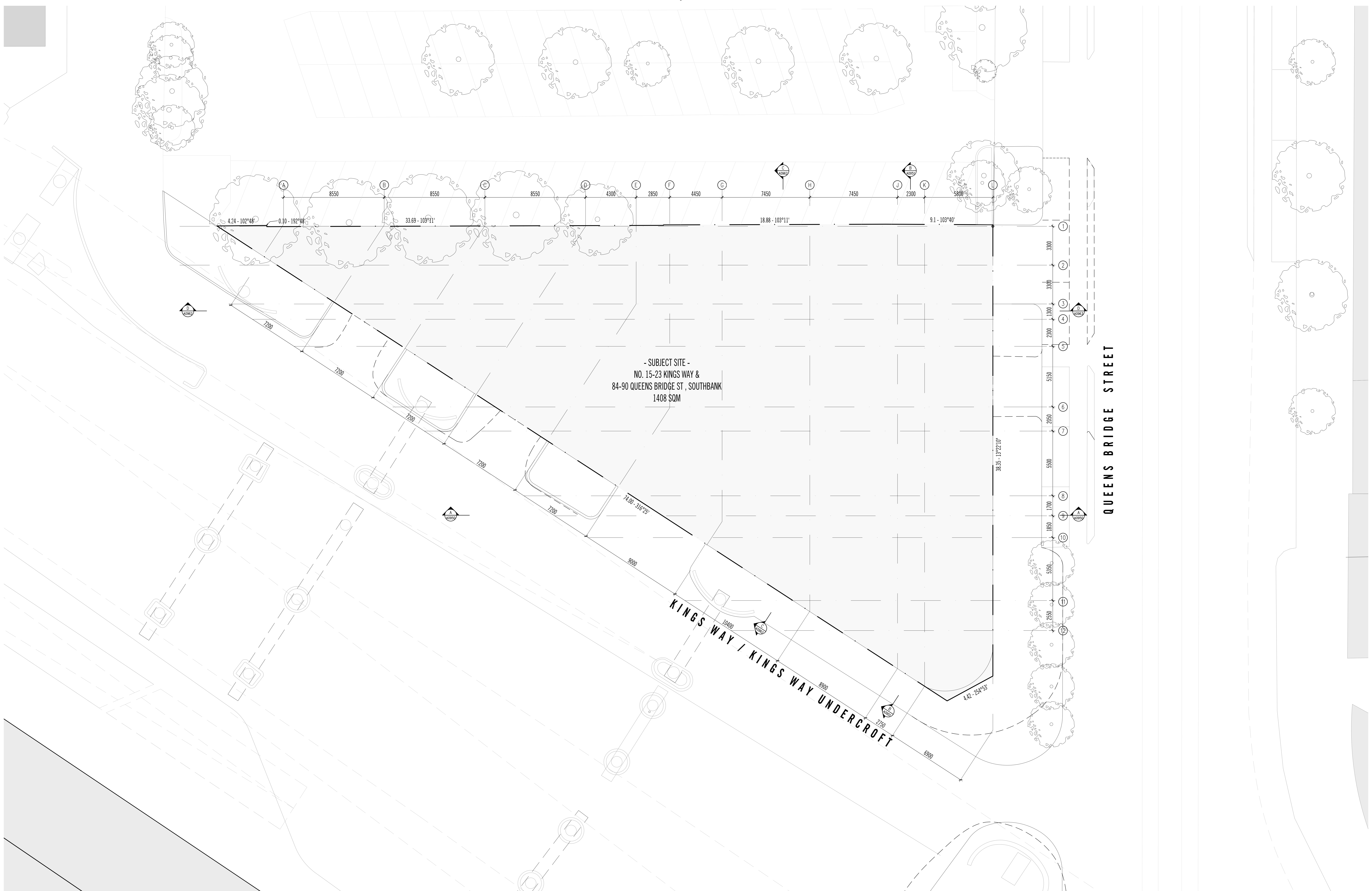
Project Number:  
**20032**

Drawing Number:  
**A0010**

Revision:  
**K**

Project Date:  
**SITE INFORMATION**  
**DEMOLITION PLAN**

Client:  
**TIME & PLACE**



- SUBJECT SITE -  
 NO. 15-23 KINGS WAY &  
 84-90 QUEENS BRIDGE ST., SOUTH BANK  
 1408 SQM

QUEENS BRIDGE STREET

KINGS WAY / KINGS WAY UNDERCROFT

Rev No.	Date	Reason for issue	Issued by	Rev No.	Date	Reason for issue	Issued by	Rev No.	Date	Reason for issue	Issued by
Rev 1	21.02.2021	ISSUED FOR INFORMATION (CONSOLIDATED SITE)	EF								

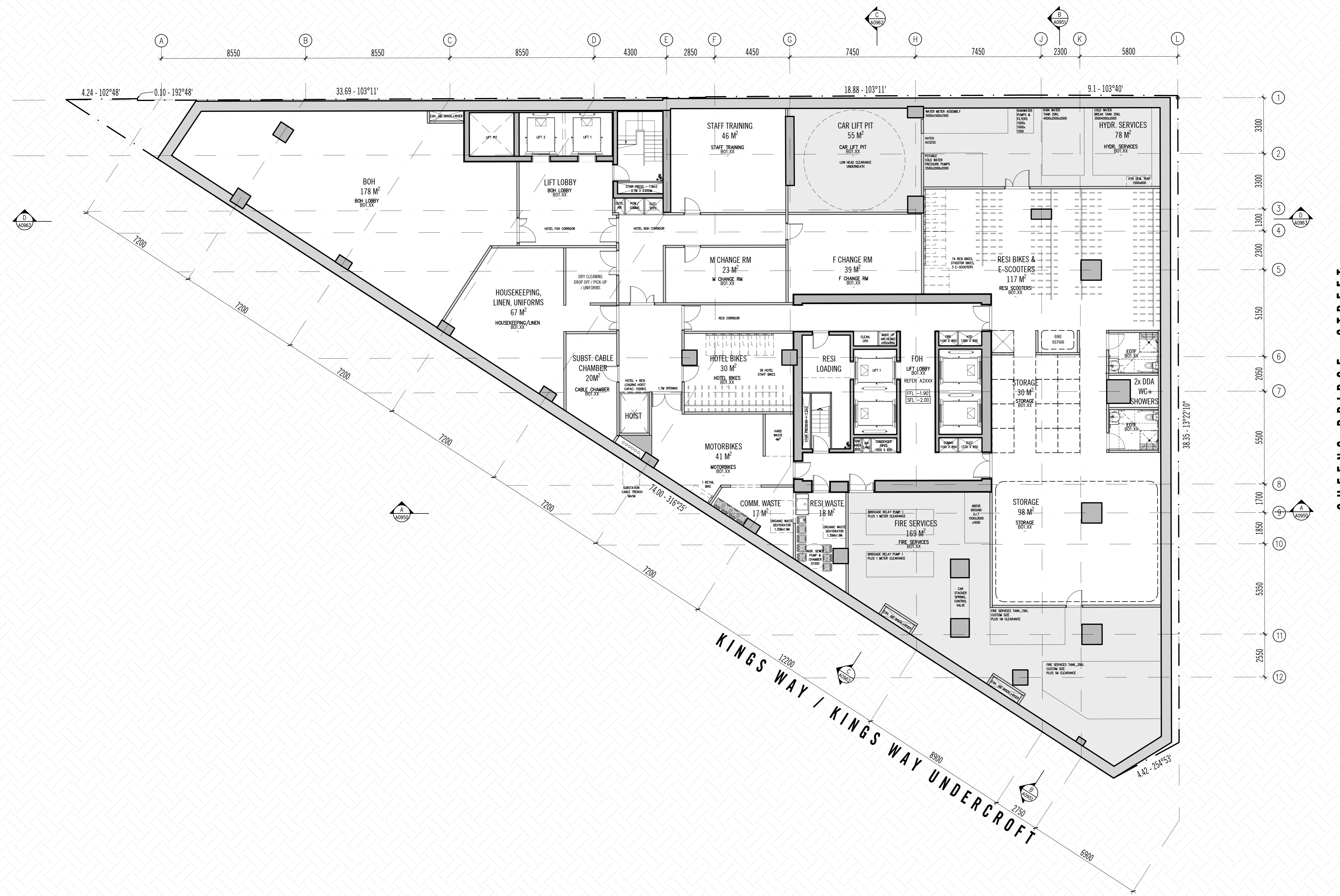
**1:100 SCALE @ A0**  
**PRELIMINARY**  
**NOT FOR CONSTRUCTION**

**ELENBERG FRASER**  
 LEVEL 1, 150 QUEEN STREET  
 MELBOURNE VICTORIA 3000 AUSTRALIA  
 TEL +61 3 9600 2290  
 EMAIL MAIL@ELENBERGFRASER.COM  
 WWW.ELENBERGFRASER.COM  
 ABRN 51 556 188 326

**NO. 15-23 KINGS WAY & 84-90 QUEENS BRIDGE ST., SOUTH BANK**  
**TIME & PLACE**

Project No.	Project Name	Project Status
20032	NO. 15-23 KINGS WAY & 84-90 QUEENS BRIDGE ST., SOUTH BANK	TP

May 21, 2021 - 6:55pm



QUEENS BRIDGE STREET

KINGS WAY / KINGS WAY UNDERCROFT

Rev No.	Date	Reason for issue	Issued by	Rev No.	Date	Reason for issue	Issued by	Rev No.	Date	Reason for issue	Issued by
Rev 1	31.07.2020	ISSUED FOR INFORMATION	CC	Rev 2	10.08.2020	ISSUED FOR INFORMATION	CC	Rev 3	11.08.2020	ISSUED FOR INFORMATION	CC
Rev 4	17.08.2020	ISSUED FOR CONCEPT APPLICATION MEETING	CC	Rev 5	18.08.2020	ISSUED FOR INFORMATION	CC	Rev 6	24.08.2020	ISSUED FOR INFORMATION	CC
Rev 7	24.08.2020	ISSUED FOR INFORMATION	CC	Rev 8	24.08.2020	ISSUED FOR INFORMATION	CC	Rev 9	24.08.2020	ISSUED FOR INFORMATION	CC
Rev 10	24.08.2020	ISSUED FOR INFORMATION	CC	Rev 11	24.08.2020	ISSUED FOR INFORMATION	CC	Rev 12	24.08.2020	ISSUED FOR INFORMATION	CC
Rev 13	24.08.2020	ISSUED FOR INFORMATION	CC	Rev 14	24.08.2020	ISSUED FOR INFORMATION	CC	Rev 15	24.08.2020	ISSUED FOR INFORMATION	CC
Rev 16	24.08.2020	ISSUED FOR INFORMATION	CC	Rev 17	24.08.2020	ISSUED FOR INFORMATION	CC	Rev 18	24.08.2020	ISSUED FOR INFORMATION	CC
Rev 19	24.08.2020	ISSUED FOR INFORMATION	CC	Rev 20	24.08.2020	ISSUED FOR INFORMATION	CC	Rev 21	24.08.2020	ISSUED FOR INFORMATION	CC
Rev 22	24.08.2020	ISSUED FOR INFORMATION	CC	Rev 23	24.08.2020	ISSUED FOR INFORMATION	CC	Rev 24	24.08.2020	ISSUED FOR INFORMATION	CC
Rev 25	24.08.2020	ISSUED FOR INFORMATION	CC	Rev 26	24.08.2020	ISSUED FOR INFORMATION	CC	Rev 27	24.08.2020	ISSUED FOR INFORMATION	CC
Rev 28	24.08.2020	ISSUED FOR INFORMATION	CC	Rev 29	24.08.2020	ISSUED FOR INFORMATION	CC	Rev 30	24.08.2020	ISSUED FOR INFORMATION	CC
Rev 31	24.08.2020	ISSUED FOR INFORMATION	CC	Rev 32	24.08.2020	ISSUED FOR INFORMATION	CC	Rev 33	24.08.2020	ISSUED FOR INFORMATION	CC
Rev 34	24.08.2020	ISSUED FOR INFORMATION	CC	Rev 35	24.08.2020	ISSUED FOR INFORMATION	CC	Rev 36	24.08.2020	ISSUED FOR INFORMATION	CC
Rev 37	24.08.2020	ISSUED FOR INFORMATION	CC	Rev 38	24.08.2020	ISSUED FOR INFORMATION	CC	Rev 39	24.08.2020	ISSUED FOR INFORMATION	CC
Rev 40	24.08.2020	ISSUED FOR INFORMATION	CC	Rev 41	24.08.2020	ISSUED FOR INFORMATION	CC	Rev 42	24.08.2020	ISSUED FOR INFORMATION	CC
Rev 43	24.08.2020	ISSUED FOR INFORMATION	CC	Rev 44	24.08.2020	ISSUED FOR INFORMATION	CC	Rev 45	24.08.2020	ISSUED FOR INFORMATION	CC
Rev 46	24.08.2020	ISSUED FOR INFORMATION	CC	Rev 47	24.08.2020	ISSUED FOR INFORMATION	CC	Rev 48	24.08.2020	ISSUED FOR INFORMATION	CC
Rev 49	24.08.2020	ISSUED FOR INFORMATION	CC	Rev 50	24.08.2020	ISSUED FOR INFORMATION	CC	Rev 51	24.08.2020	ISSUED FOR INFORMATION	CC
Rev 52	24.08.2020	ISSUED FOR INFORMATION	CC	Rev 53	24.08.2020	ISSUED FOR INFORMATION	CC	Rev 54	24.08.2020	ISSUED FOR INFORMATION	CC
Rev 55	24.08.2020	ISSUED FOR INFORMATION	CC	Rev 56	24.08.2020	ISSUED FOR INFORMATION	CC	Rev 57	24.08.2020	ISSUED FOR INFORMATION	CC
Rev 58	24.08.2020	ISSUED FOR INFORMATION	CC	Rev 59	24.08.2020	ISSUED FOR INFORMATION	CC	Rev 60	24.08.2020	ISSUED FOR INFORMATION	CC
Rev 61	24.08.2020	ISSUED FOR INFORMATION	CC	Rev 62	24.08.2020	ISSUED FOR INFORMATION	CC	Rev 63	24.08.2020	ISSUED FOR INFORMATION	CC
Rev 64	24.08.2020	ISSUED FOR INFORMATION	CC	Rev 65	24.08.2020	ISSUED FOR INFORMATION	CC	Rev 66	24.08.2020	ISSUED FOR INFORMATION	CC
Rev 67	24.08.2020	ISSUED FOR INFORMATION	CC	Rev 68	24.08.2020	ISSUED FOR INFORMATION	CC	Rev 69	24.08.2020	ISSUED FOR INFORMATION	CC
Rev 70	24.08.2020	ISSUED FOR INFORMATION	CC	Rev 71	24.08.2020	ISSUED FOR INFORMATION	CC	Rev 72	24.08.2020	ISSUED FOR INFORMATION	CC
Rev 73	24.08.2020	ISSUED FOR INFORMATION	CC	Rev 74	24.08.2020	ISSUED FOR INFORMATION	CC	Rev 75	24.08.2020	ISSUED FOR INFORMATION	CC
Rev 76	24.08.2020	ISSUED FOR INFORMATION	CC	Rev 77	24.08.2020	ISSUED FOR INFORMATION	CC	Rev 78	24.08.2020	ISSUED FOR INFORMATION	CC
Rev 79	24.08.2020	ISSUED FOR INFORMATION	CC	Rev 80	24.08.2020	ISSUED FOR INFORMATION	CC	Rev 81	24.08.2020	ISSUED FOR INFORMATION	CC
Rev 82	24.08.2020	ISSUED FOR INFORMATION	CC	Rev 83	24.08.2020	ISSUED FOR INFORMATION	CC	Rev 84	24.08.2020	ISSUED FOR INFORMATION	CC
Rev 85	24.08.2020	ISSUED FOR INFORMATION	CC	Rev 86	24.08.2020	ISSUED FOR INFORMATION	CC	Rev 87	24.08.2020	ISSUED FOR INFORMATION	CC
Rev 88	24.08.2020	ISSUED FOR INFORMATION	CC	Rev 89	24.08.2020	ISSUED FOR INFORMATION	CC	Rev 90	24.08.2020	ISSUED FOR INFORMATION	CC
Rev 91	24.08.2020	ISSUED FOR INFORMATION	CC	Rev 92	24.08.2020	ISSUED FOR INFORMATION	CC	Rev 93	24.08.2020	ISSUED FOR INFORMATION	CC
Rev 94	24.08.2020	ISSUED FOR INFORMATION	CC	Rev 95	24.08.2020	ISSUED FOR INFORMATION	CC	Rev 96	24.08.2020	ISSUED FOR INFORMATION	CC
Rev 97	24.08.2020	ISSUED FOR INFORMATION	CC	Rev 98	24.08.2020	ISSUED FOR INFORMATION	CC	Rev 99	24.08.2020	ISSUED FOR INFORMATION	CC
Rev 100	24.08.2020	ISSUED FOR INFORMATION	CC	Rev 101	24.08.2020	ISSUED FOR INFORMATION	CC	Rev 102	24.08.2020	ISSUED FOR INFORMATION	CC

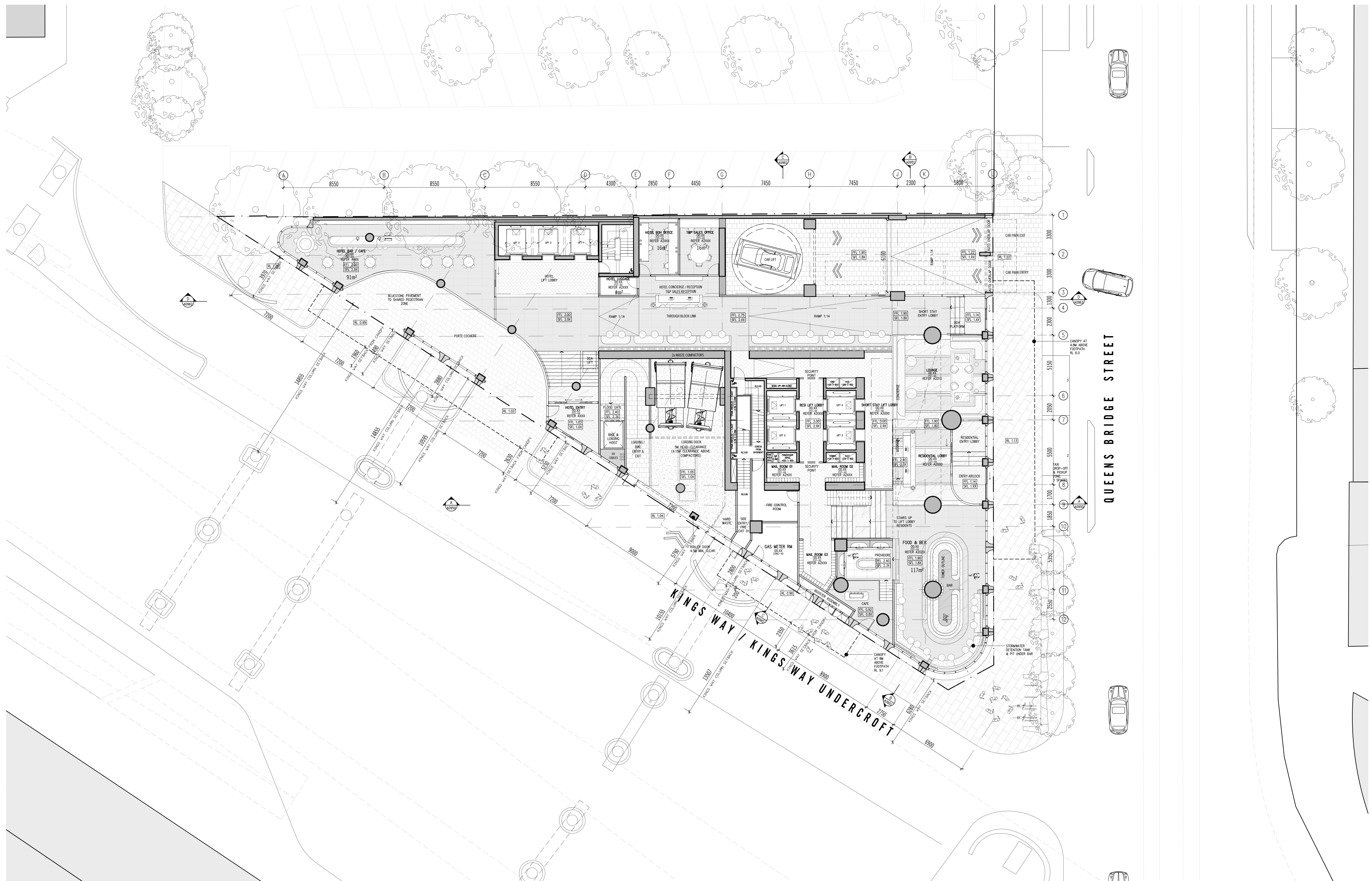
Conditions of use:  
 1. This document is to be used in accordance with the terms of the Conditions of Use set out in the separate document titled 'Conditions of Use' which is available on the project website.  
 2. This document is preliminary and is not to be relied upon for any purpose other than for information only. It is subject to change without notice.  
 3. The design and construction of any works shown in this document is subject to the approval of the relevant authorities and may be subject to change without notice.  
 4. The design and construction of any works shown in this document is subject to the approval of the relevant authorities and may be subject to change without notice.  
 5. The design and construction of any works shown in this document is subject to the approval of the relevant authorities and may be subject to change without notice.  
 6. The design and construction of any works shown in this document is subject to the approval of the relevant authorities and may be subject to change without notice.

1:100  
 SCALE @ A0  
**PRELIMINARY**  
**NOT FOR CONSTRUCTION**

**ELENBERG FRASER**  
 LEVEL 1, 160 QUEEN STREET  
 MELBOURNE VICTORIA 3000 AUSTRALIA  
 TEL: 461 3 9600 2290  
 EMAIL: MAIL@ELENBERGFRASER.COM  
 WWW.ELENBERGFRASER.COM  
 4881 136 188 274

Project Title:  
**NO. 15-23 KINGS WAY & 84-90 QUEENS BRIDGE ST, SOUTHBANK**  
 Drawing Title:  
**GENERAL ARRANGEMENT PLAN BASEMENT PLAN**  
 Project Number:  
**20032**  
 Drawing Sheet:  
**TP**





Rev No.	Date	Reason for Issue	Issued by	Rev No.	Date	Reason for Issue	Issued by	Rev No.	Date	Reason for Issue	Issued by
Rev 1	21.05.2021	ISSUED FOR INFORMATION	CS	Rev 1	21.05.2021	ISSUED FOR INFORMATION	CS	Rev 1	21.05.2021	ISSUED FOR INFORMATION	CS
Rev 2	31.05.2021	ISSUED FOR CONCEPT APPLICATION MEETING	CS	Rev 2	31.05.2021	ISSUED FOR CONCEPT APPLICATION MEETING	CS	Rev 2	31.05.2021	ISSUED FOR CONCEPT APPLICATION MEETING	CS
Rev 3	11.06.2021	ISSUED FOR INFORMATION	CS	Rev 3	11.06.2021	ISSUED FOR INFORMATION	CS	Rev 3	11.06.2021	ISSUED FOR INFORMATION	CS
Rev 4	20.06.2021	ISSUED FOR TOWN PLANNING	CS	Rev 4	20.06.2021	ISSUED FOR TOWN PLANNING	CS	Rev 4	20.06.2021	ISSUED FOR TOWN PLANNING	CS
Rev 5	21.06.2021	ISSUED FOR TOWN PLANNING - P11 RESPONSE	CS	Rev 5	21.06.2021	ISSUED FOR TOWN PLANNING - P11 RESPONSE	CS	Rev 5	21.06.2021	ISSUED FOR TOWN PLANNING - P11 RESPONSE	CS
Rev 6	22.06.2021	ISSUED FOR INFORMATION	TR	Rev 6	22.06.2021	ISSUED FOR INFORMATION	TR	Rev 6	22.06.2021	ISSUED FOR INFORMATION	TR
Rev 7	22.06.2021	ISSUED FOR INFORMATION	TR	Rev 7	22.06.2021	ISSUED FOR INFORMATION	TR	Rev 7	22.06.2021	ISSUED FOR INFORMATION	TR
Rev 8	12.06.2021	ISSUED FOR INFORMATION	TR	Rev 8	12.06.2021	ISSUED FOR INFORMATION	TR	Rev 8	12.06.2021	ISSUED FOR INFORMATION	TR
Rev 9	16.06.2021	ISSUED FOR TOWN PLANNING (CONSOLIDATED SET)	TR	Rev 9	16.06.2021	ISSUED FOR TOWN PLANNING (CONSOLIDATED SET)	TR	Rev 9	16.06.2021	ISSUED FOR TOWN PLANNING (CONSOLIDATED SET)	TR
Rev 10	21.06.2021	ISSUED FOR P11 RESPONSE (CONSOLIDATED SET)	TR	Rev 10	21.06.2021	ISSUED FOR P11 RESPONSE (CONSOLIDATED SET)	TR	Rev 10	21.06.2021	ISSUED FOR P11 RESPONSE (CONSOLIDATED SET)	TR

Conditions of use:  
 1. This document is to be used in accordance with the terms of the Client's Request for Proposal and the contract documents.  
 2. This document is not to be used for any other purpose without the written consent of Elenberg Frasier.  
 3. This document is not to be used for any other purpose without the written consent of Elenberg Frasier.  
 4. This document is not to be used for any other purpose without the written consent of Elenberg Frasier.  
 5. This document is not to be used for any other purpose without the written consent of Elenberg Frasier.

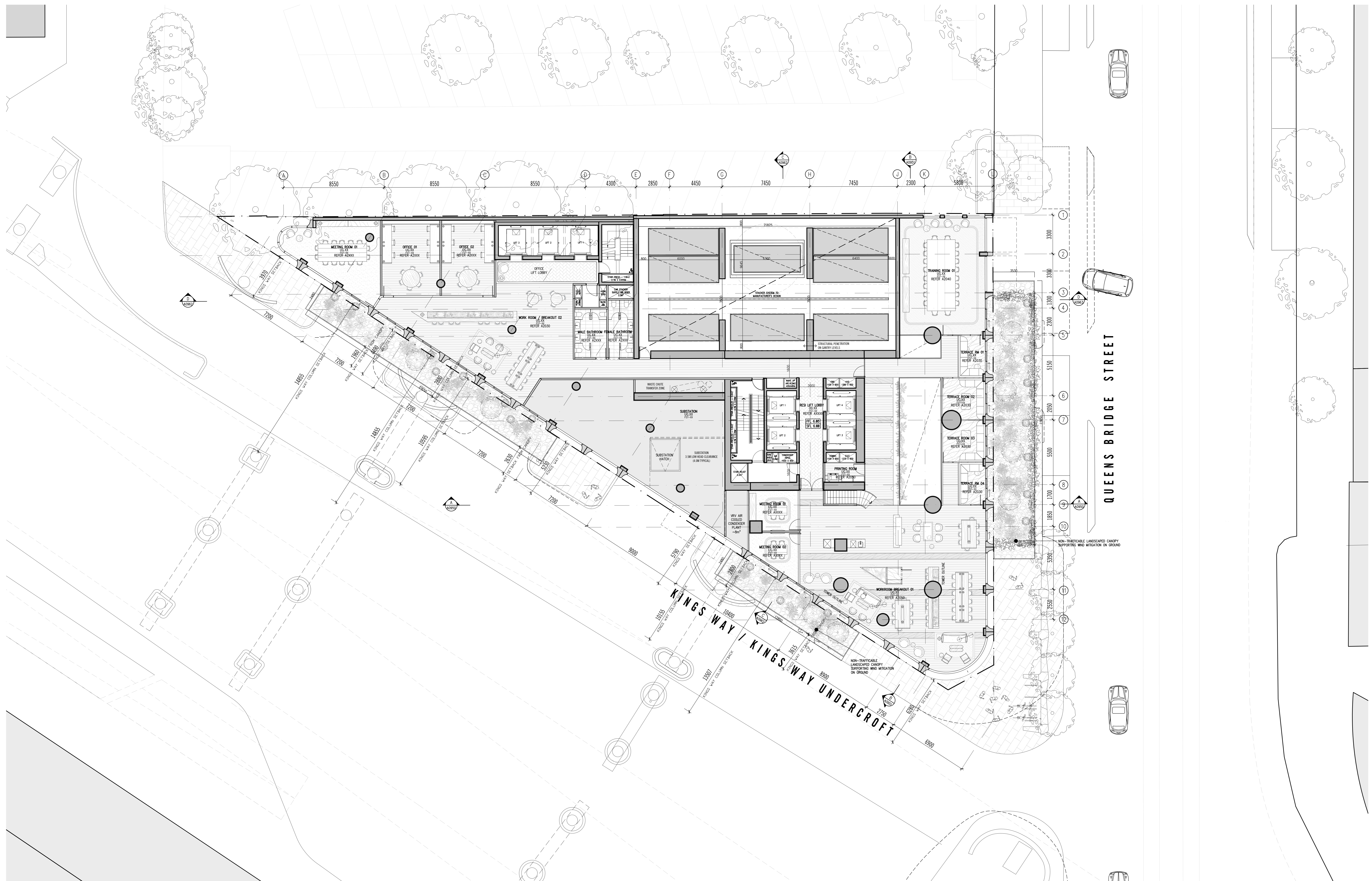
1:100 SCALE @ A0  
**PRELIMINARY**  
**NOT FOR CONSTRUCTION**

**ELENBERG FRASIER**  
 LEVEL 1, 160 QUEEN STREET  
 MELBOURNE VICTORIA 3000 AUSTRALIA  
 TEL 461 9600 2260  
 EMAIL MAIL@ELENBERGFRASIER.COM  
 WWW.ELENBERGFRASIER.COM

**NO. 15-23 KINGS WAY & 84-90 QUEENS BRIDGE ST, SOUTHBANK**  
**GENERAL ARRANGEMENT PLAN**  
**LEVEL 00L GROUND FLOOR PLAN (LOWER)**  
**TIME & PLACE**

Project Number: **20032**  
 Drawing Number: **A0100L**  
 Revision: **K**

May 21, 2021 - 6:50pm



Rev No.	Date	Reason for Issue	Issued by	Rev No.	Date	Reason for Issue	Issued by	Rev No.	Date	Reason for Issue	Issued by
Rev 1	13.07.2020	ISSUED FOR INFORMATION	CC	Rev 1	13.07.2020	ISSUED FOR INFORMATION	CC	Rev 1	13.07.2020	ISSUED FOR INFORMATION	CC
Rev 2	17.08.2020	ISSUED FOR GENERAL PRE-APPLICATION MEETINGS	CC	Rev 2	17.08.2020	ISSUED FOR GENERAL PRE-APPLICATION MEETINGS	CC	Rev 2	17.08.2020	ISSUED FOR GENERAL PRE-APPLICATION MEETINGS	CC
Rev 3	21.08.2020	ISSUED FOR GENERAL PRE-APPLICATION MEETINGS	CC	Rev 3	21.08.2020	ISSUED FOR GENERAL PRE-APPLICATION MEETINGS	CC	Rev 3	21.08.2020	ISSUED FOR GENERAL PRE-APPLICATION MEETINGS	CC
Rev 4	24.08.2020	ISSUED FOR GENERAL PRE-APPLICATION MEETINGS	CC	Rev 4	24.08.2020	ISSUED FOR GENERAL PRE-APPLICATION MEETINGS	CC	Rev 4	24.08.2020	ISSUED FOR GENERAL PRE-APPLICATION MEETINGS	CC
Rev 5	19.09.2020	ISSUED FOR TOWN PLANNING	CC	Rev 5	19.09.2020	ISSUED FOR TOWN PLANNING	CC	Rev 5	19.09.2020	ISSUED FOR TOWN PLANNING	CC
Rev 6	21.11.2020	ISSUED FOR TOWN PLANNING - 60% RESPONSE	CC	Rev 6	21.11.2020	ISSUED FOR TOWN PLANNING - 60% RESPONSE	CC	Rev 6	21.11.2020	ISSUED FOR TOWN PLANNING - 60% RESPONSE	CC
Rev 7	22.11.2020	ISSUED FOR INFORMATION	TR	Rev 7	22.11.2020	ISSUED FOR INFORMATION	TR	Rev 7	22.11.2020	ISSUED FOR INFORMATION	TR
Rev 8	22.11.2020	ISSUED FOR INFORMATION	TR	Rev 8	22.11.2020	ISSUED FOR INFORMATION	TR	Rev 8	22.11.2020	ISSUED FOR INFORMATION	TR
Rev 9	22.01.2021	ISSUED FOR INFORMATION	TR	Rev 9	22.01.2021	ISSUED FOR INFORMATION	TR	Rev 9	22.01.2021	ISSUED FOR INFORMATION	TR
Rev 10	18.02.2021	ISSUED FOR TOWN PLANNING (CONSOLIDATED SITE)	TR	Rev 10	18.02.2021	ISSUED FOR TOWN PLANNING (CONSOLIDATED SITE)	TR	Rev 10	18.02.2021	ISSUED FOR TOWN PLANNING (CONSOLIDATED SITE)	TR
Rev 11	23.02.2021	ISSUED FOR 60% RESPONSE (CONSOLIDATED SITE)	TR	Rev 11	23.02.2021	ISSUED FOR 60% RESPONSE (CONSOLIDATED SITE)	TR	Rev 11	23.02.2021	ISSUED FOR 60% RESPONSE (CONSOLIDATED SITE)	TR
Rev 12	23.02.2021	ISSUED FOR 60% RESPONSE (CONSOLIDATED SITE)	TR	Rev 12	23.02.2021	ISSUED FOR 60% RESPONSE (CONSOLIDATED SITE)	TR	Rev 12	23.02.2021	ISSUED FOR 60% RESPONSE (CONSOLIDATED SITE)	TR

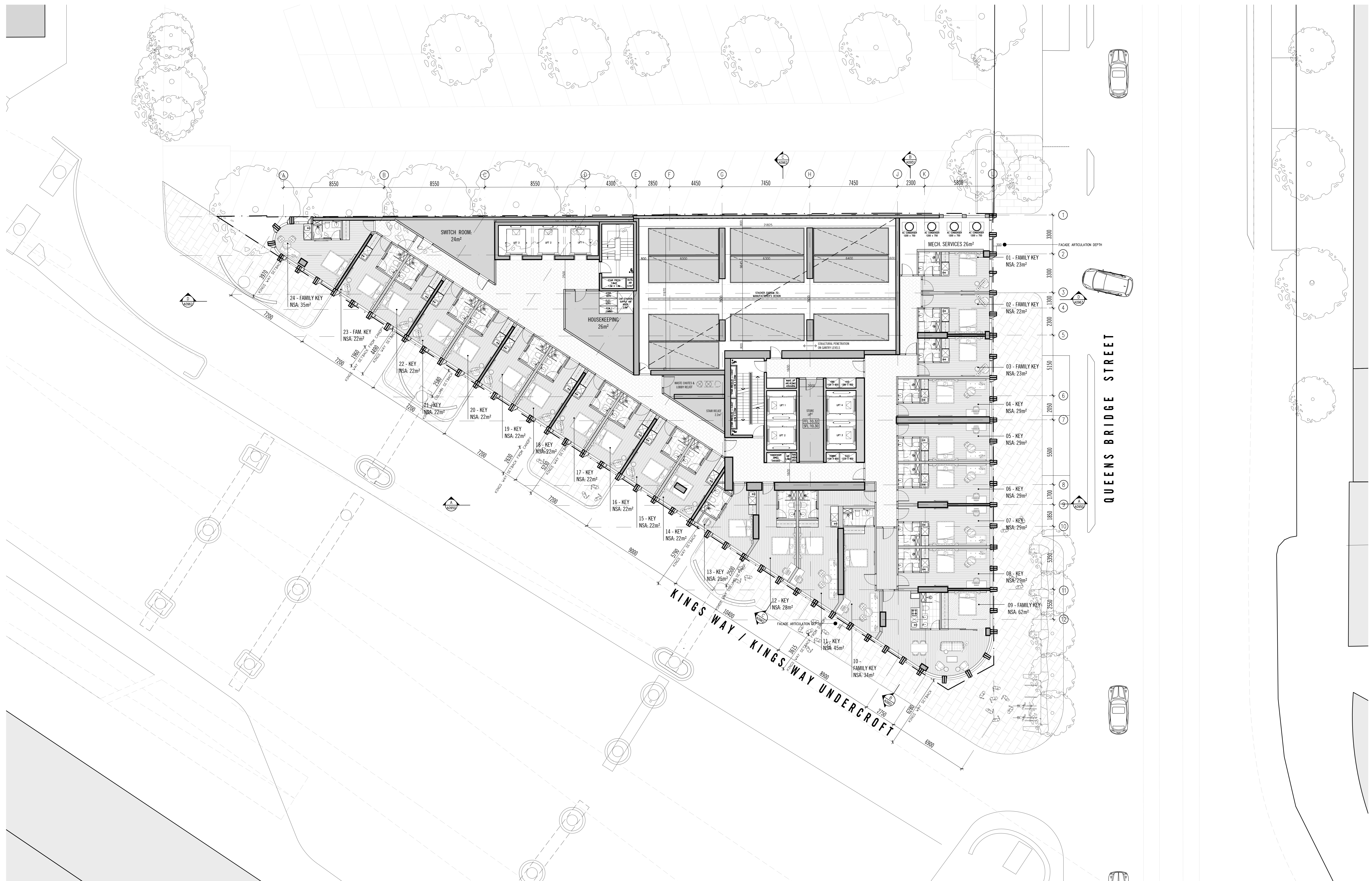
Conditions of Use  
 1. This document is issued as a preliminary design and is not to be used for construction purposes without the written consent of the Architect.  
 2. The Architect shall not be responsible for any errors or omissions in this document or for any consequences arising therefrom.  
 3. The Architect shall not be responsible for any delays or interruptions in the progress of the project or for any consequences arising therefrom.  
 4. The Architect shall not be responsible for any costs or expenses incurred by the Client in connection with the project or for any consequences arising therefrom.  
 5. The Architect shall not be responsible for any claims or damages arising from the use of this document or for any consequences arising therefrom.  
 6. The Architect shall not be responsible for any claims or damages arising from the use of this document or for any consequences arising therefrom.  
 7. The Architect shall not be responsible for any claims or damages arising from the use of this document or for any consequences arising therefrom.  
 8. The Architect shall not be responsible for any claims or damages arising from the use of this document or for any consequences arising therefrom.  
 9. The Architect shall not be responsible for any claims or damages arising from the use of this document or for any consequences arising therefrom.  
 10. The Architect shall not be responsible for any claims or damages arising from the use of this document or for any consequences arising therefrom.

1:100  
 SCALE @ A0  
**PRELIMINARY**  
**NOT FOR CONSTRUCTION**  
 ELENBERG FRASER  
 LEVEL 1, 160 QUEEN STREET  
 MELBOURNE VICTORIA 3000 AUSTRALIA  
 TEL: 461 3 9600 2260  
 EMAIL: MAIL@ELENBERGFRASER.COM  
 WWW.ELENBERGFRASER.COM  
 ABA 17 148 176

**ELENBERG FRASER**  
 LEVEL 1, 160 QUEEN STREET  
 MELBOURNE VICTORIA 3000 AUSTRALIA  
 TEL: 461 3 9600 2260  
 EMAIL: MAIL@ELENBERGFRASER.COM  
 WWW.ELENBERGFRASER.COM  
 ABA 17 148 176

**NO. 15-23 KINGS WAY & 84-90 QUEENS BRIDGE ST, SOUTHBANK**  
**TIME & PLACE**

**GENERAL ARRANGEMENT PLAN**  
**LEVEL 00U GROUND FLOOR PLAN (UPPER)**  
 Project Number: **20032**  
 Drawing Number: **A0100U**  
 Revision: **K**  
 TP  
 May 21, 2021 - 6:56pm



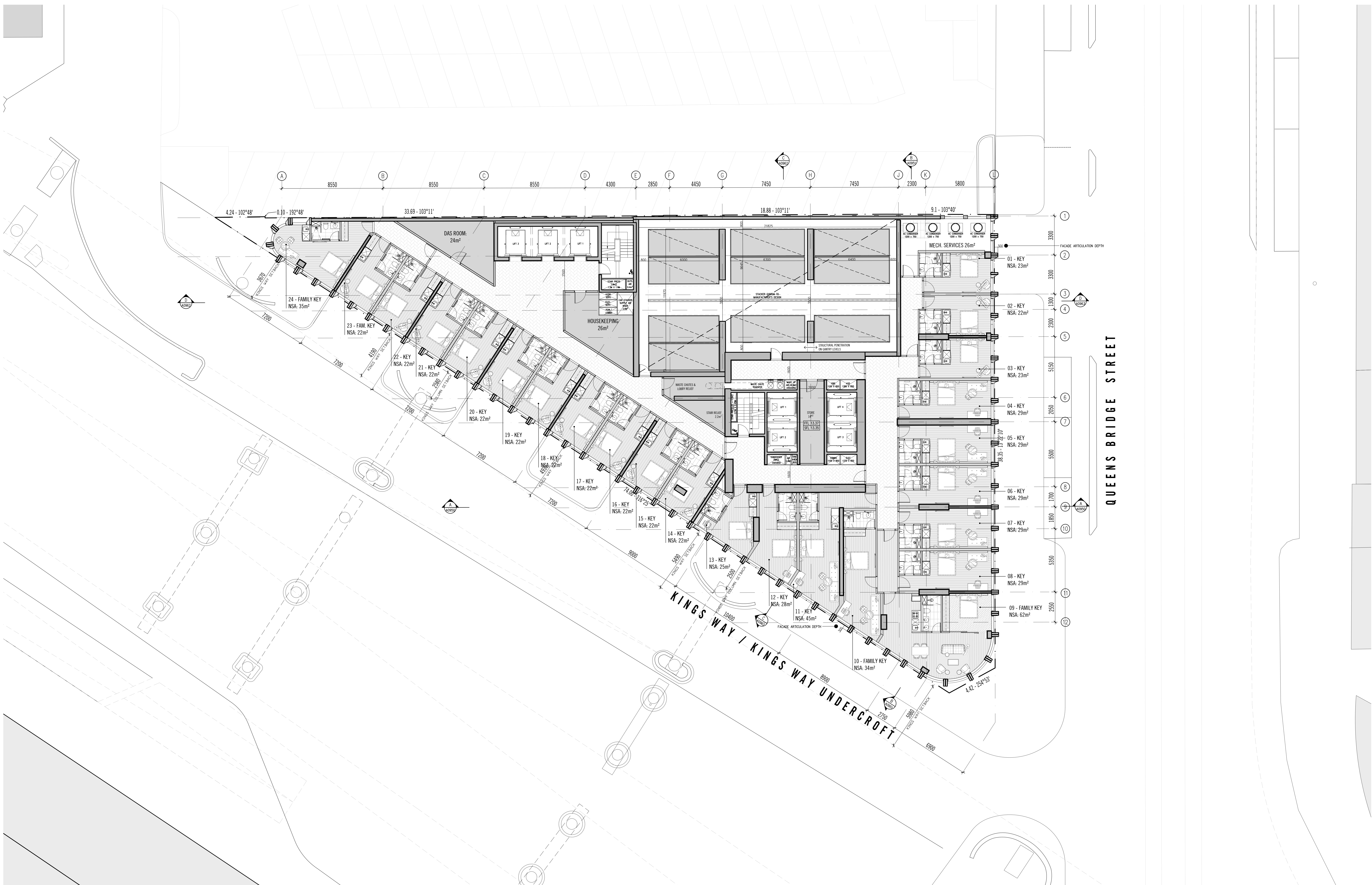
Rev No.	Date	Reason for Issue	Issued by	Rev No.	Date	Reason for Issue	Issued by	Rev No.	Date	Reason for Issue	Issued by	Rev No.	Date	Reason for Issue	Issued by
Rev A	13.07.2020	ISSUED FOR INFORMATION	CC	Rev A	13.07.2020	ISSUED FOR INFORMATION	CC	Rev A	13.07.2020	ISSUED FOR INFORMATION	CC	Rev A	13.07.2020	ISSUED FOR INFORMATION	CC
Rev B	13.07.2020	ISSUED FOR COUNCIL PRE-APPLICATION MEETINGS	CC	Rev B	13.07.2020	ISSUED FOR COUNCIL PRE-APPLICATION MEETINGS	CC	Rev B	13.07.2020	ISSUED FOR COUNCIL PRE-APPLICATION MEETINGS	CC	Rev B	13.07.2020	ISSUED FOR COUNCIL PRE-APPLICATION MEETINGS	CC
Rev C	13.07.2020	ISSUED FOR COUNCIL PRE-APPLICATION MEETINGS	CC	Rev C	13.07.2020	ISSUED FOR COUNCIL PRE-APPLICATION MEETINGS	CC	Rev C	13.07.2020	ISSUED FOR COUNCIL PRE-APPLICATION MEETINGS	CC	Rev C	13.07.2020	ISSUED FOR COUNCIL PRE-APPLICATION MEETINGS	CC
Rev D	13.07.2020	ISSUED FOR COUNCIL PRE-APPLICATION MEETINGS	CC	Rev D	13.07.2020	ISSUED FOR COUNCIL PRE-APPLICATION MEETINGS	CC	Rev D	13.07.2020	ISSUED FOR COUNCIL PRE-APPLICATION MEETINGS	CC	Rev D	13.07.2020	ISSUED FOR COUNCIL PRE-APPLICATION MEETINGS	CC
Rev E	13.07.2020	ISSUED FOR COUNCIL PRE-APPLICATION MEETINGS	CC	Rev E	13.07.2020	ISSUED FOR COUNCIL PRE-APPLICATION MEETINGS	CC	Rev E	13.07.2020	ISSUED FOR COUNCIL PRE-APPLICATION MEETINGS	CC	Rev E	13.07.2020	ISSUED FOR COUNCIL PRE-APPLICATION MEETINGS	CC
Rev F	13.07.2020	ISSUED FOR COUNCIL PRE-APPLICATION MEETINGS	CC	Rev F	13.07.2020	ISSUED FOR COUNCIL PRE-APPLICATION MEETINGS	CC	Rev F	13.07.2020	ISSUED FOR COUNCIL PRE-APPLICATION MEETINGS	CC	Rev F	13.07.2020	ISSUED FOR COUNCIL PRE-APPLICATION MEETINGS	CC
Rev G	13.07.2020	ISSUED FOR COUNCIL PRE-APPLICATION MEETINGS	CC	Rev G	13.07.2020	ISSUED FOR COUNCIL PRE-APPLICATION MEETINGS	CC	Rev G	13.07.2020	ISSUED FOR COUNCIL PRE-APPLICATION MEETINGS	CC	Rev G	13.07.2020	ISSUED FOR COUNCIL PRE-APPLICATION MEETINGS	CC
Rev H	13.07.2020	ISSUED FOR COUNCIL PRE-APPLICATION MEETINGS	CC	Rev H	13.07.2020	ISSUED FOR COUNCIL PRE-APPLICATION MEETINGS	CC	Rev H	13.07.2020	ISSUED FOR COUNCIL PRE-APPLICATION MEETINGS	CC	Rev H	13.07.2020	ISSUED FOR COUNCIL PRE-APPLICATION MEETINGS	CC
Rev I	13.07.2020	ISSUED FOR COUNCIL PRE-APPLICATION MEETINGS	CC	Rev I	13.07.2020	ISSUED FOR COUNCIL PRE-APPLICATION MEETINGS	CC	Rev I	13.07.2020	ISSUED FOR COUNCIL PRE-APPLICATION MEETINGS	CC	Rev I	13.07.2020	ISSUED FOR COUNCIL PRE-APPLICATION MEETINGS	CC
Rev J	13.07.2020	ISSUED FOR COUNCIL PRE-APPLICATION MEETINGS	CC	Rev J	13.07.2020	ISSUED FOR COUNCIL PRE-APPLICATION MEETINGS	CC	Rev J	13.07.2020	ISSUED FOR COUNCIL PRE-APPLICATION MEETINGS	CC	Rev J	13.07.2020	ISSUED FOR COUNCIL PRE-APPLICATION MEETINGS	CC
Rev K	13.07.2020	ISSUED FOR COUNCIL PRE-APPLICATION MEETINGS	CC	Rev K	13.07.2020	ISSUED FOR COUNCIL PRE-APPLICATION MEETINGS	CC	Rev K	13.07.2020	ISSUED FOR COUNCIL PRE-APPLICATION MEETINGS	CC	Rev K	13.07.2020	ISSUED FOR COUNCIL PRE-APPLICATION MEETINGS	CC

Conditions of Use  
 This document is issued as a preliminary design and is not to be used for construction. It is the responsibility of the client to ensure that the design meets all relevant regulatory requirements. The client acknowledges that the design is preliminary and that the final design may vary from the design shown in this document. The client agrees to indemnify the architect for any loss or damage arising from the use of this design for any purpose other than that for which it was intended. The architect is not responsible for any loss or damage arising from the use of this design for any purpose other than that for which it was intended. The architect is not responsible for any loss or damage arising from the use of this design for any purpose other than that for which it was intended.

1:100  
 SCALE @ A0  
**PRELIMINARY**  
**NOT FOR CONSTRUCTION**  
 Report any discrepancies to the Architect for decision before proceeding with the work.

**ELENBERG FRASER**  
 LEVEL 1, 160 QUEEN STREET  
 MELBOURNE VICTORIA 3000 AUSTRALIA  
 TEL: +61 3 9600 2260  
 EMAIL: MAIL@ELENBERGFRASER.COM  
 WWW.ELENBERGFRASER.COM  
 AKA 17 146 176

Project Name  
**NO. 15-23 KINGS WAY & 84-90 QUEENS BRIDGE ST, SOUTHBANK**  
 Drawing Title  
**GENERAL ARRANGEMENT PLAN LEVEL 01 FLOOR PLAN**  
 Project Number  
**20032**  
 Drawing Status  
**TP**  
 Drawing Number  
**A0101**  
 Revision  
**K**  
 Date  
**May 21, 2021 - 6:56pm**



Rev No.	Date	Reason for Issue	Issued by	Rev No.	Date	Reason for Issue	Issued by	Rev No.	Date	Reason for Issue	Issued by	Rev No.	Date	Reason for Issue	Issued by
Rev 1	14.02.2021	ISSUED FOR INFORMATION	CC	Rev 2	14.02.2021	ISSUED FOR INFORMATION	CC	Rev 3	14.02.2021	ISSUED FOR INFORMATION	CC	Rev 4	14.02.2021	ISSUED FOR INFORMATION	CC
Rev 5	14.02.2021	ISSUED FOR INFORMATION	CC	Rev 6	14.02.2021	ISSUED FOR INFORMATION	CC	Rev 7	14.02.2021	ISSUED FOR INFORMATION	CC	Rev 8	14.02.2021	ISSUED FOR INFORMATION	CC
Rev 9	14.02.2021	ISSUED FOR INFORMATION	CC	Rev 10	14.02.2021	ISSUED FOR INFORMATION	CC	Rev 11	14.02.2021	ISSUED FOR INFORMATION	CC	Rev 12	14.02.2021	ISSUED FOR INFORMATION	CC
Rev 13	14.02.2021	ISSUED FOR INFORMATION	CC	Rev 14	14.02.2021	ISSUED FOR INFORMATION	CC	Rev 15	14.02.2021	ISSUED FOR INFORMATION	CC	Rev 16	14.02.2021	ISSUED FOR INFORMATION	CC
Rev 17	14.02.2021	ISSUED FOR INFORMATION	CC	Rev 18	14.02.2021	ISSUED FOR INFORMATION	CC	Rev 19	14.02.2021	ISSUED FOR INFORMATION	CC	Rev 20	14.02.2021	ISSUED FOR INFORMATION	CC
Rev 21	14.02.2021	ISSUED FOR INFORMATION	CC	Rev 22	14.02.2021	ISSUED FOR INFORMATION	CC	Rev 23	14.02.2021	ISSUED FOR INFORMATION	CC	Rev 24	14.02.2021	ISSUED FOR INFORMATION	CC
Rev 25	14.02.2021	ISSUED FOR INFORMATION	CC	Rev 26	14.02.2021	ISSUED FOR INFORMATION	CC	Rev 27	14.02.2021	ISSUED FOR INFORMATION	CC	Rev 28	14.02.2021	ISSUED FOR INFORMATION	CC
Rev 29	14.02.2021	ISSUED FOR INFORMATION	CC	Rev 30	14.02.2021	ISSUED FOR INFORMATION	CC	Rev 31	14.02.2021	ISSUED FOR INFORMATION	CC	Rev 32	14.02.2021	ISSUED FOR INFORMATION	CC
Rev 33	14.02.2021	ISSUED FOR INFORMATION	CC	Rev 34	14.02.2021	ISSUED FOR INFORMATION	CC	Rev 35	14.02.2021	ISSUED FOR INFORMATION	CC	Rev 36	14.02.2021	ISSUED FOR INFORMATION	CC
Rev 37	14.02.2021	ISSUED FOR INFORMATION	CC	Rev 38	14.02.2021	ISSUED FOR INFORMATION	CC	Rev 39	14.02.2021	ISSUED FOR INFORMATION	CC	Rev 40	14.02.2021	ISSUED FOR INFORMATION	CC
Rev 41	14.02.2021	ISSUED FOR INFORMATION	CC	Rev 42	14.02.2021	ISSUED FOR INFORMATION	CC	Rev 43	14.02.2021	ISSUED FOR INFORMATION	CC	Rev 44	14.02.2021	ISSUED FOR INFORMATION	CC
Rev 45	14.02.2021	ISSUED FOR INFORMATION	CC	Rev 46	14.02.2021	ISSUED FOR INFORMATION	CC	Rev 47	14.02.2021	ISSUED FOR INFORMATION	CC	Rev 48	14.02.2021	ISSUED FOR INFORMATION	CC
Rev 49	14.02.2021	ISSUED FOR INFORMATION	CC	Rev 50	14.02.2021	ISSUED FOR INFORMATION	CC	Rev 51	14.02.2021	ISSUED FOR INFORMATION	CC	Rev 52	14.02.2021	ISSUED FOR INFORMATION	CC
Rev 53	14.02.2021	ISSUED FOR INFORMATION	CC	Rev 54	14.02.2021	ISSUED FOR INFORMATION	CC	Rev 55	14.02.2021	ISSUED FOR INFORMATION	CC	Rev 56	14.02.2021	ISSUED FOR INFORMATION	CC
Rev 57	14.02.2021	ISSUED FOR INFORMATION	CC	Rev 58	14.02.2021	ISSUED FOR INFORMATION	CC	Rev 59	14.02.2021	ISSUED FOR INFORMATION	CC	Rev 60	14.02.2021	ISSUED FOR INFORMATION	CC
Rev 61	14.02.2021	ISSUED FOR INFORMATION	CC	Rev 62	14.02.2021	ISSUED FOR INFORMATION	CC	Rev 63	14.02.2021	ISSUED FOR INFORMATION	CC	Rev 64	14.02.2021	ISSUED FOR INFORMATION	CC
Rev 65	14.02.2021	ISSUED FOR INFORMATION	CC	Rev 66	14.02.2021	ISSUED FOR INFORMATION	CC	Rev 67	14.02.2021	ISSUED FOR INFORMATION	CC	Rev 68	14.02.2021	ISSUED FOR INFORMATION	CC
Rev 69	14.02.2021	ISSUED FOR INFORMATION	CC	Rev 70	14.02.2021	ISSUED FOR INFORMATION	CC	Rev 71	14.02.2021	ISSUED FOR INFORMATION	CC	Rev 72	14.02.2021	ISSUED FOR INFORMATION	CC
Rev 73	14.02.2021	ISSUED FOR INFORMATION	CC	Rev 74	14.02.2021	ISSUED FOR INFORMATION	CC	Rev 75	14.02.2021	ISSUED FOR INFORMATION	CC	Rev 76	14.02.2021	ISSUED FOR INFORMATION	CC
Rev 77	14.02.2021	ISSUED FOR INFORMATION	CC	Rev 78	14.02.2021	ISSUED FOR INFORMATION	CC	Rev 79	14.02.2021	ISSUED FOR INFORMATION	CC	Rev 80	14.02.2021	ISSUED FOR INFORMATION	CC
Rev 81	14.02.2021	ISSUED FOR INFORMATION	CC	Rev 82	14.02.2021	ISSUED FOR INFORMATION	CC	Rev 83	14.02.2021	ISSUED FOR INFORMATION	CC	Rev 84	14.02.2021	ISSUED FOR INFORMATION	CC
Rev 85	14.02.2021	ISSUED FOR INFORMATION	CC	Rev 86	14.02.2021	ISSUED FOR INFORMATION	CC	Rev 87	14.02.2021	ISSUED FOR INFORMATION	CC	Rev 88	14.02.2021	ISSUED FOR INFORMATION	CC
Rev 89	14.02.2021	ISSUED FOR INFORMATION	CC	Rev 90	14.02.2021	ISSUED FOR INFORMATION	CC	Rev 91	14.02.2021	ISSUED FOR INFORMATION	CC	Rev 92	14.02.2021	ISSUED FOR INFORMATION	CC
Rev 93	14.02.2021	ISSUED FOR INFORMATION	CC	Rev 94	14.02.2021	ISSUED FOR INFORMATION	CC	Rev 95	14.02.2021	ISSUED FOR INFORMATION	CC	Rev 96	14.02.2021	ISSUED FOR INFORMATION	CC
Rev 97	14.02.2021	ISSUED FOR INFORMATION	CC	Rev 98	14.02.2021	ISSUED FOR INFORMATION	CC	Rev 99	14.02.2021	ISSUED FOR INFORMATION	CC	Rev 100	14.02.2021	ISSUED FOR INFORMATION	CC

Conditions of use  
 1. This document is the property of Elenberg Fraser and is to be used only for the project and site for which it was prepared.  
 2. It is not to be used for any other purpose without the written consent of Elenberg Fraser.  
 3. It is not to be used in any way that may be construed as an endorsement or recommendation of any product or service.  
 4. It is not to be used in any way that may be construed as a statement of opinion or a guarantee of any kind.  
 5. It is not to be used in any way that may be construed as a statement of fact or a statement of law.  
 6. It is not to be used in any way that may be construed as a statement of value or a statement of price.  
 7. It is not to be used in any way that may be construed as a statement of quality or a statement of quantity.  
 8. It is not to be used in any way that may be construed as a statement of condition or a statement of performance.  
 9. It is not to be used in any way that may be construed as a statement of risk or a statement of liability.  
 10. It is not to be used in any way that may be construed as a statement of responsibility or a statement of accountability.

1:100  
 SCALE @ A0  
**PRELIMINARY**  
**NOT FOR CONSTRUCTION**  
 Elenberg Fraser has prepared this drawing in accordance with the requirements of the Building Act 2011 and the Building Regulations 2012. It is not to be used for any other purpose without the written consent of Elenberg Fraser.

**ELENBERG FRASER**  
 LEVEL 1, 160 QUEEN STREET  
 MELBOURNE, VICTORIA 3000 AUSTRALIA  
 TEL: +61 3 9600 2260  
 EMAIL: MAIL@ELENBERGFRASER.COM  
 WWW.ELENBERGFRASER.COM  
 ABRN 1148 188 078

Project Site  
**NO. 15-23 KINGS WAY & 84-90 QUEENS BRIDGE ST, SOUTHBANK**  
 Drawing Title  
**GENERAL ARRANGEMENT PLAN LEVEL 02 FLOOR PLAN**  
 Project Number  
**20032**  
 Drawing Status  
**TP**

Drawing Number  
**A0102**  
 Revision  
**K**  
 May 21, 2021 - 6:56pm



Rev No.	Date	Reason for Issue	Issued By	Rev No.	Date	Reason for Issue	Issued By
Rev A	15.03.2020	ISSUED FOR INFORMATION	CC	Rev A	15.03.2020	ISSUED FOR INFORMATION	CC
Rev B	17.03.2020	ISSUED FOR COUNCIL PRE-APPLICATION MEETINGS	CC	Rev B	17.03.2020	ISSUED FOR COUNCIL PRE-APPLICATION MEETINGS	CC
Rev C	18.03.2020	ISSUED FOR COUNCIL INFORMATION	CC	Rev C	18.03.2020	ISSUED FOR COUNCIL INFORMATION	CC
Rev D	19.03.2020	ISSUED FOR TOWN PLANNING	CC	Rev D	19.03.2020	ISSUED FOR TOWN PLANNING	CC
Rev E	21.03.2020	ISSUED FOR TOWN PLANNING - PRE RESPONSE	CC	Rev E	21.03.2020	ISSUED FOR TOWN PLANNING - PRE RESPONSE	CC
Rev F	22.03.2020	ISSUED FOR INFORMATION	CC	Rev F	22.03.2020	ISSUED FOR INFORMATION	CC
Rev G	23.03.2020	ISSUED FOR INFORMATION	CC	Rev G	23.03.2020	ISSUED FOR INFORMATION	CC
Rev H	24.03.2020	ISSUED FOR INFORMATION	CC	Rev H	24.03.2020	ISSUED FOR INFORMATION	CC
Rev I	18.02.2021	ISSUED FOR TOWN PLANNING (CONSOLIDATED SITE)	CC	Rev I	18.02.2021	ISSUED FOR TOWN PLANNING (CONSOLIDATED SITE)	CC
Rev J	21.02.2021	ISSUED FOR PRE RESPONSE (CONSOLIDATED SITE)	CC	Rev J	21.02.2021	ISSUED FOR PRE RESPONSE (CONSOLIDATED SITE)	CC

Conditions of use:  
 1. This document is issued in accordance with the terms of the Conditions of Use set out in the separate document attached to this drawing.  
 2. This document is issued for the purpose of providing information only and does not constitute an offer of any financial product or service.  
 3. This document is issued for the purpose of providing information only and does not constitute an offer of any financial product or service.  
 4. This document is issued for the purpose of providing information only and does not constitute an offer of any financial product or service.  
 5. This document is issued for the purpose of providing information only and does not constitute an offer of any financial product or service.

1:100  
 SCALE @ A0  
**PRELIMINARY**  
**NOT FOR CONSTRUCTION**

**ELENBERG FRASER**  
 LEVEL 1, 160 QUEEN STREET  
 MELBOURNE, VICTORIA, 3000, AUSTRALIA  
 TEL: +61 3 9600 2260  
 EMAIL: MAIL@ELENBERGFRASER.COM  
 WWW.ELENBERGFRASER.COM  
 ABRN 1148 188 076

Project Title:  
**NO. 15-23 KINGS WAY & 84-90 QUEENS BRIDGE ST, SOUTHBANK**  
 Drawing Title:  
**GENERAL ARRANGEMENT PLAN LEVEL 03-07 FLOOR PLAN**  
 Project Number:  
**20032**  
 Drawing Status:  
**TP**

Drawing No:  
**A0103**  
 Revision:  
**K**  
 Date:  
 May 21, 2021 - 7:00pm