

Report to the Future Melbourne (Planning) Committee

Agenda item 6.2

City of Melbourne submission on the Fishermans Bend Recast Vision

5 July 2016

Presenter: Emma Appleton, Manager Urban Strategy

Purpose and background

1. The purpose of this report is to seek endorsement of the City of Melbourne submission (Submission) on the Fishermans Bend Recast Vision.
2. The Fishermans Bend Taskforce released the Fishermans Bend Recast Vision for public consultation and engagement with key industry stakeholders from May 27 to 1 July 2016. The Taskforce has agreed to receive the Submission after the formal consultation period.
3. The Submission builds upon, and is consistent with, the City of Melbourne's previous submission on the 2013 Fishermans Bend Draft Vision and Interim Design Guidelines which was endorsed by the Future Melbourne Committee in November 2013 (<http://www.melbourne.vic.gov.au/about-council/committees-meetings/meeting-archive/pages/19november2013,530pmviewdetailsanddocuments.aspx>).
4. The Taskforce intends to release the final Fishermans Bend Recast Vision in August 2016 which will inform the forthcoming Fishermans Bend Framework and Precinct Plans.

Key issues

5. Management generally supports the Fishermans Bend Recast Vision and particularly supports the following elements:
 - Using and building upon the 10 strategic directions from the 2013 Draft Vision.
 - Commitment for Fishermans Bend to be a Green Star Community and to achieve the five sustainability goals.
 - Commitment to public and active transport, including river crossings, and to investment in transport infrastructure, before, during and after residential and business construction.
 - The vision for Lorimer as a mixed use precinct and extension of the central city and the vision for the Employment Precinct as a world-renowned location for innovative industries and producing world-leading research, engineering, technology and products.
6. The main recommendation changes to the Fishermans Bend Recast Vision proposed in the Submission include:
 - Differentiating Fishermans Bend in Melbourne's growth story from other urban renewal areas.
 - Committing to planning mechanisms to credibly deliver the vision and provide investment certainty for the private sector by committing to key infrastructure including transport, schools, parks and recreational facilities.
 - Committing to setting performance targets to help deliver the 10 strategic directions.
 - Committing to incorporating Indigenous heritage and Caring for Country approaches into planning for urban renewal.

Recommendation from management

7. That the Future Melbourne Committee endorses the City of Melbourne submission on the Fishermans Bend Recast Vision.

Attachments:

1. Supporting Attachment (page 2 of 50)
2. City of Melbourne submission on Fishermans Bend Recast Vision (page 3 of 50)
3. Fishermans Bend Recast Vision (page 13 of 50)

Supporting Attachment

Legal

1. There are no direct legal implications arising from the recommendation from management.

Finance

2. There are no financial implications from the recommendation in this report.

Conflict of interest

3. No member of Council staff, or other person engaged under a contract, involved in advising on or preparing this report has declared a direct or indirect interest in relation to the matter of the report.

Stakeholder consultation

4. Public and stakeholder consultation for the Fishermans Bend Recast Vision was undertaken by the Fishermans Bend Taskforce from 27 May to 1 July 2016 and involved online and face to face consultation. The Department of Environment, Land, Water and Planning's (DELWP) Have Your Say community engagement portal was the platform for online consultation (<http://haveyoursay.delwp.vic.gov.au/fishermans-bend>). The face to face consultation involved six pop-up events in Docklands, the Employment Precinct, Southbank, South Melbourne and Garden City and an expert panel discussion at Zinc, Federation Square on 30 June. The outcomes of the consultation will be published by the Fishermans Bend Taskforce on their Have Your Say website before the release of the final Fishermans Bend Recast Vision in August 2016.

Relation to Council policy

5. Fishermans Bend is designated as an urban renewal area in the City of Melbourne's Municipal Strategic Statement.

Environmental sustainability

6. The Fishermans Bend Recast Vision makes a commitment to sustainability including for Fishermans Bend to be a Green Star Community and ensure Fishermans Bend will be a low carbon city, a water sensitive city, a climate adept city, a connected and liveable city and a low waste city.

CITY OF MELBOURNE SUBMISSION ON THE FISHERMANS BEND RECAST VISION

July 2016

Contents

1.	Overview	3
2.	City of Melbourne support for the Fishermans Bend Recast Vision.....	3
3.	Recommended changes to the Fishermans Bend Recast Vision	5
Appendix 1: Audit of the Fishermans Bend Recast Vision against City of Melbourne policies.....		8

1. Overview

The City of Melbourne welcomes the release of the Fishermans Bend Recast Vision. It is an important step in establishing a clear direction for Fishermans Bend for future planning work and delivery.

City of Melbourne officers have provided advice and commentary on the recast vision as it was developed and will continue to work with the Fishermans Bend Taskforce to enable high quality urban renewal. The City of Melbourne will advocate for our adopted policy objectives and Council strategies to be realised in Fishermans Bend. A review of how relevant City of Melbourne objectives have been addressed in the recast vision has been included in appendix 1.

The Fishermans Bend Recast Vision asks the community and stakeholders three questions. The City of Melbourne's high level response to these questions is below, supported with further information in following sections.

1.1 **Is this a vision that reflects your own aspirations for the future of Fishermans Bend?**

The City of Melbourne supports this vision, particularly the following elements:

- Commitment to sustainability, in particular for Fishermans Bend to be a Green Star Community.
- Commitment to public and active transport and to investing in infrastructure before residential and business construction.
- Identification of Lorimer as a mixed use precinct and an extension of the central city.
- Using the 10 strategic directions to frame the current vision.

1.2 **Are the 10 strategic directions still relevant today?**

The City of Melbourne supports the 10 strategic directions. If this support is shared with the broader community, the strategic directions should be endorsed in the final recast vision and used as the overarching framework to direct and be more defined and explicit in future planning work through the Fishermans Bend Framework and Precinct Plans.

1.3 **What can be changed or improved about the vision?**

Recommended changes to maximise the effectiveness of the vision include:

- Differentiating Fishermans Bend in Melbourne's growth story.
- Committing to planning mechanisms to credibly deliver the vision and provide investment certainty for the private sector.
- Committing to early construction and delivery of key infrastructure including transport, information and communications technology, schools, parks and recreational facilities.
- Committing to setting performance targets.
- Committing to incorporating Indigenous heritage and Caring for Country approaches into planning for urban renewal.

2. City of Melbourne support for the Fishermans Bend Recast Vision

The City of Melbourne is generally supportive of the Fishermans Bend Recast Vision and particularly supports the following elements:

2.1 **Commitment for Fishermans Bend to be a Green Star Community and to achieving the five sustainability goals**

The City of Melbourne strongly supports the use of the Green Building Council of Australia's Green Star Communities as a benchmarking tool to provide a robust framework to achieve sustainability, liveability and resilience.

This commitment will help to deliver the objectives of City of Melbourne strategies including Zero Net Emissions by 2020 (2014), Total Watermark (2014), the Open Space Strategy (2012), the Climate Change Adaptation Strategy (2009) and the Transport Strategy (2012)

The recast vision should spell out the critical sustainability priorities for Fishermans Bend:

- Fishermans Bend will be planned as an urban renewal area that is adapted to the impacts of climate change (including flooding and sea level rise) and contributes to mitigation by significantly reducing greenhouse gas emissions. The recast vision should provide examples of how this will be achieved at whole of Fishermans Bend, precinct and lot/building scale.
- Integrated water management, including water sensitive urban design and flooding responses, third pipe systems and centralised water recycling.
- Green corridors, walls, roofs and plantings that provide habitat.
- Blue corridors for a place likely to experience flooding and creating public spaces that are able to be inundated and act as ponds in a flood event.
- Facilitating the uptake of new technologies over the lifetime of Fishermans Bend.
- Include defined aspirations and targets to help achieve the five sustainability goals.

The recast vision refers to resilience in relation to climate change. The City of Melbourne supports the use of a broader definition of resilience in the recast vision that encompasses social and economic aspects. This is in line with the Resilient Melbourne Strategy.

2.2 Commitment to public and active transport, including river crossings and investing in transport infrastructure before, during and after residential and business construction

River crossings for public transport, pedestrians and cyclists that directly connect Lorimer to Docklands and to the Hoddle Grid are critical to the sustainable development of Fishermans Bend. They will ensure growth of jobs and businesses and enable a new community to establish itself with good access to services and facilities in Docklands.

The City of Melbourne particularly supports the commitment to early investment in and delivery of transport infrastructure. This is needed to support economic growth and the health and wellbeing of new communities. The commitment to public and active transport is endorsed by the City of Melbourne's Transport Strategy (2012) which has six governing directions including 'go anywhere, anytime public transport for inner Melbourne', 'support public transport, walking and cycling as the dominant modes of transport in inner Melbourne' and 'develop high-mobility pedestrian and public transport streets in the central city'.

The alignment of future pedestrian, cycle and tram bridges across the Yarra River is not yet known and this should be acknowledged in the recast vision. The east-west active and public transport link (and associated river crossing) in the fourth image on page 19 is shown conceptually rather than on a planned alignment. The connections to the CBD and suburbs to the north are also shown conceptually on page 19 in the first image. We recommend that text is added to the precinct direction images for Lorimer to note that the connections shown across the Yarra River are indicative or give further clarity about their status. Planning for future river crossings should be guided by adopted Victorian Government, City of Melbourne and City of Port Phillip policy, including Access Docklands (2013), the City of Melbourne Transport Strategy (2012) and the Docklands Waterways Strategic Plan 2009-2018, in addition to a thorough evidence base and cost benefit analysis of different options.

2.3 Clear identification of Lorimer as a mixed use precinct and an extension of the central city

The 2013 Fishermans Bend Urban Renewal Area Draft Vision identified Lorimer as an extension of the central city and the Fishermans Bend Recast Vision reinforces this vision for Lorimer. The City of Melbourne supports this vision for Lorimer as a well-designed, sustainable higher density place with a range of central city activities, including residential, commercial, retail and cultural uses. The recast vision should also identify the planning tools that will be used to realise this vision (refer to section 3.2) given the current Capital City zoning and the issues associated with this to control and deliver different uses and activities.

2.4 Using the 10 strategic directions to frame the current vision

The City of Melbourne continues to support the 10 strategic directions which generally capture the intent for Fishermans Bend. Further detail about each strategic direction should be included to explain what each direction means for Fishermans Bend (for example, it is unclear in this context what the term “21st century jobs” means or what a great place for families entails) and the strategic directions should be embedded, refined and made more explicit throughout all future work, including the Fishermans Bend Framework Plan and Precinct Plans.

Strategic direction #10 relates to strong partnerships and effective governance. The recast vision should also include reference to civic leadership and go further than a focus only on planning approvals.

3. Recommended changes to the Fishermans Bend Recast Vision

The following changes are recommended to strengthen and clarify the vision. They are in addition to the recommendations listed in section 3 which reinforce the elements in the vision particularly supported by the City of Melbourne.

3.1 Differentiating Fishermans Bend in Melbourne’s growth story

The City of Melbourne recommends that the recast vision include a narrative about the specific importance and uniqueness of Fishermans Bend in relation to wider Melbourne.

The recast vision should set out Fishermans Bend’s relationship to other urban renewal areas and identify strategic connections including to the Hoddle Grid and Arden-Macaulay. It should demonstrate how the Port Capacity Project to redevelop the Port of Melbourne’s Webb Dock, the future lease of the Port of Melbourne and other significant projects are being considered throughout the planning for the area.

The recast vision should identify key opportunities and issues. These include opportunities such as reinforcing the Yarra River as an important defining characteristic of Melbourne’s central city, and issues such as land contamination and flooding risks.

There is also an opportunity for the Employment Precinct to develop as a future advanced manufacturing precinct, building on the area’s strong heritage in manufacturing. This would help re-invent employment in Melbourne as job requirements change due to digitisation and robotisation.

3.2 Committing to Fishermans Bend as a smart urban renewal area

The recast vision should articulate that Fishermans Bend will be built and operated as a ‘smart’ urban renewal area that embraces smart technologies, connected infrastructure and data to improve safety, reduce congestion and improve operating efficiencies. The recast vision should identify how this will be achieved including through a commitment to information and communications technology including the National Broadband Network.

3.3 Committing to planning mechanisms and key enablers to deliver the vision

The recast vision should broadly identify how Fishermans Bend will be realised over a 35 year timeframe, rather than solely focussing on the 2050 endpoint. It should demonstrate that infrastructure (including transport, information and communications technology and school infrastructure) will be delivered early to make Fishermans Bend an attractive place to live for a diverse community, including families as per the strategic directions. This is necessary to signal and provide certainty to the private development market that the vision can and will be delivered.

The recast vision should make a commitment to incorporating and interpreting the area's Indigenous and European heritage and to incorporating Caring for Country approaches into planning for urban renewal. It should identify how this will be used to create areas with distinct character and a sense of place.

The recast vision should make a commitment to implementing planning mechanisms to achieve the vision, including delivering the desired land use mix and range of activities identified for each precinct.

The recast vision should make clear commitments to affordable housing (housing outside of the main housing market and managed/owned by a registered housing association), to providing community infrastructure, including schools, sporting and recreational facilities and parks. It should make a commitment to securing key sites to provide for a wide range of uses, from active recreation to ecologically functional urban parks and spaces to help deliver the levels of density envisaged for the area. The recast vision should make a commitment to protecting solar access to future and existing public spaces and streets which is particularly important given that many proposed parks are linear.

It should identify a commitment to high quality architectural design and reiterate the commitment to using Design Review Panels to achieve this.

The recast vision should emphasise the need to support new and developing technologies and to develop as a smart city across the whole of Fishermans Bend and within each precinct. This means the smart design of sustainable and flexible hi-tech infrastructure and service delivery. Fishermans Bend could become an exemplar of using smart technologies to help deliver healthy, safe, sustainable and productive places. It should be agile and flexible to the advent of new technologies such as autonomous vehicles.

3.4 Demonstrating how Fishermans Bend works as a whole and establishing principles that apply across all precincts

The recast vision should articulate and map the overarching strategic positioning of Fishermans Bend, such as public transport, regional open space and levels of density. Individual precinct planning should then demonstrate how they deliver these higher order elements. Individual precincts will be distinct neighbourhoods with their own character and sense of place.

Many of the directions and text descriptions for the individual precincts could be elevated to apply to the whole renewal area. We recommend using headings to structure precinct statements to ensure that principles are addressed in each precinct.

The recast vision should frame Fishermans Bend in the context of the Plan Melbourne objective to create more compact cities. This will help form an integrated spatial vision for Fishermans Bend.

Compact City principles are based on an efficient public transport system with an urban layout that encourages walking and cycling, a mix of land uses, low energy consumption and reduced pollution.

3.5 Committing to setting targets

The City of Melbourne recommends using the recast vision to commit to setting performance targets in the future Fishermans Bend Framework Plan and precinct plans. Performance targets should be informed by adopted Victorian Government and City of Melbourne and City of Port Phillip policy. Some recommended performance targets include:

- Spatial Network Analysis for Multi-Modal Urban Transport Systems (SNAMUTS) tool for accessibility targets (<http://www.snamuts.com/>). The City of Melbourne's Transport Strategy (2012) identifies mode share targets and emphasizes the importance of walking, cycling and public transport in the central city.
- The City of Melbourne Open Space Strategy's (2012) key objective to provide open space within an easy walking distance (300 metres for local and small local space) and our Urban Forest Strategy target of providing 40 per cent canopy cover.
- Performance indicators in the forthcoming City of Melbourne Local Liveability Study relating to local accessibility and land uses (derived from the Places for People study).

3.6 Recognising the importance of Westgate Park

Westgate Park will have critical role in Fishermans Bend and has the potential to be a great park in Melbourne's inner city. This should be recognised in the recast vision and it should be designated as part of Fishermans Bend urban renewal area.

3.7 Communicating the vision effectively

The recast vision is a useful tool to restart the public conversation on the future of Fishermans Bend. The artistic images are important in communicating desired outcomes and generating support for the vision, however to make them even more effective we recommend adjusting the style of the images to make it easier to understand the future scenarios. This could be achieved by relating the images to existing conditions, such as streets, buildings or surrounding landmarks while also including current photographs to show a 'now and in the future'. It is also important that the images visually represent the narrative and written content of the document and look towards the future of Fishermans Bend as a highly sustainable and technologically smart place.

Appendix 1: Audit of the Fishermans Bend Recast Vision against City of Melbourne policies

City of Melbourne policy	Assessment of Fishermans Bend Recast Vision against this City of Melbourne policy
Aboriginal Heritage Action Plan	The City of Melbourne understands that an Indigenous Cultural Values Assessment is being carried out for Fishermans Bend. The City of Melbourne also has a commitment in its draft Annual Plan and Budget 2016-2017 initiative to work with the Victorian Government to undertake a heritage review of Fishermans Bend. This work should inform the future Fishermans Bend Framework Plan and future precinct planning work.
Active Melbourne Strategy	City of Melbourne recommends that the vision be updated to identify a commitment to providing or facilitating development of sporting and recreational facilities in Fishermans Bend.
Arden-Macaulay Structure Plan	The City of Melbourne recommends that the recast vision is updated to articulate how Fishermans Bend relates to other urban renewal areas.
Arts Strategy	The commitments of the Arts Strategy should inform the future Fishermans Bend Framework Plan and future precinct planning work.
Beyond the Safe City Strategy	Crime prevention through environmental design (CPTED) principles should be applied in future precinct planning work in alignment with the Beyond the Safe City Strategy.
Bicycle Plan	The Fishermans Bend Recast Vision acknowledges the importance of public and active transport in Fishermans Bend and is consistent with the City of Melbourne Bicycle Plan. The Bicycle Plan should inform the future Fishermans Bend Framework Plan and future precinct planning work. The Bicycle Plan includes actions to support the Victorian Government to develop strategic cycling corridors including the Yarra River Corridor through Lorimer and the Employment Precinct.
City North Structure Plan	The City of Melbourne recommends that the recast vision is updated to articulate how Fishermans Bend relates to other urban renewal areas.
Climate Change Adaptation Strategy	The Fishermans Bend Recast Vision includes five sustainability goals including that Fishermans Bend will be “a climate adept city”.
Community Infrastructure Development Framework	City of Melbourne recommends that the vision be updated to include a commitment to providing or facilitating development of education, child care, aged care and other facilities.
Docklands Community and Place Plan	The City of Melbourne recommends that the recast vision is updated to articulate how Fishermans Bend relates to other urban renewal areas. Future community infrastructure and public space plans for Lorimer and Fishermans Bend should be coordinated with the Docklands Community and Place Plan.
Docklands Public Realm Plan	The City of Melbourne recommends that the recast vision is updated to articulate how Fishermans Bend relates to other urban renewal areas. Future community infrastructure and public space plans for Lorimer and Fishermans Bend should be coordinated with the Docklands Public Realm Plan.
Docklands Waterways Strategic Plan	The City of Melbourne recommends that the recast vision is updated to articulate how Fishermans Bend relates to other urban renewal areas.

City of Melbourne policy	Assessment of Fishermans Bend Recast Vision against this City of Melbourne policy
	Transport planning for Fishermans Bend should consider the Docklands Waterways Strategic Plan.
Food City – City of Melbourne Food Policy	Food City should inform future precinct planning work to ensure that people can access healthy food for a healthy life.
Heritage Strategy	The City of Melbourne has a draft Annual Plan and Budget 2016-2017 initiative to work with the Victorian Government to undertake a heritage review of Fishermans Bend, in line with the Heritage Strategy. This review will inform the future Fishermans Bend Framework Plan and future precinct planning work.
	The Housing Strategy helps achieve the City of Melbourne's established aspiration for an inner and central city where housing is affordable, well-designed and meets the diverse needs of our residents.
Homes for People – Housing Strategy	<p>Actions in the Housing Strategy include encouraging development bonuses in Fishermans Bend to incentivise the provision of affordable housing and working with the Victorian Government to deliver Victorian Apartment Design Standards.</p> <p>The recast vision should make a commitment to delivering affordable housing, diverse housing types and quality design in Fishermans Bend.</p> <p>The Housing Strategy should also inform future precinct planning work.</p>
Inner Melbourne Action Plan	Many of the 27 strategies in the draft Inner Melbourne Action Plan 2015-2025 directly relate to Fishermans Bend. They include planning and delivering infrastructure and open space and transport networks across the inner Melbourne region, which includes the City of Port Phillip and the City of Melbourne. The Inner Melbourne Action Plan should inform the future Fishermans Bend Framework Plan and future precinct planning work.
Knowledge City Strategy	The Knowledge City Strategy should inform the future Fishermans Bend Framework Plan and future precinct planning work.
Melbourne for All People Strategy	Melbourne for All People should inform future precinct planning work to ensure that public spaces, infrastructure and service delivery in Fishermans Bend caters for everyone's needs.
Melbourne Library Service Strategic Plan	<p>The principles and objectives of the Melbourne Library Service Strategic Plan should inform future precinct planning work.</p> <p>Ensuring good connections to the Library and the Community Hub at the Dock will allow new communities to establish with good access to these facilities.</p>
Melbourne Planning Scheme	Following public consultation the Fishermans Bend Recast Vision will be used to guide the preparation of a draft recast Fishermans Bend Framework Plan, and draft precinct plans for the five precincts in Fishermans Bend for public consultation. Following public consultation, these plans will be translated into controls in the Melbourne and Port Phillip planning schemes.
Music Strategy	The Music Strategy should inform the future Fishermans Bend Framework Plan and future precinct planning work.
Open Space Strategy	The principles and objectives of the Open Space Strategy should be considered a critical input to public space planning and inform the future Fishermans Bend Framework Plan and future precinct planning work.

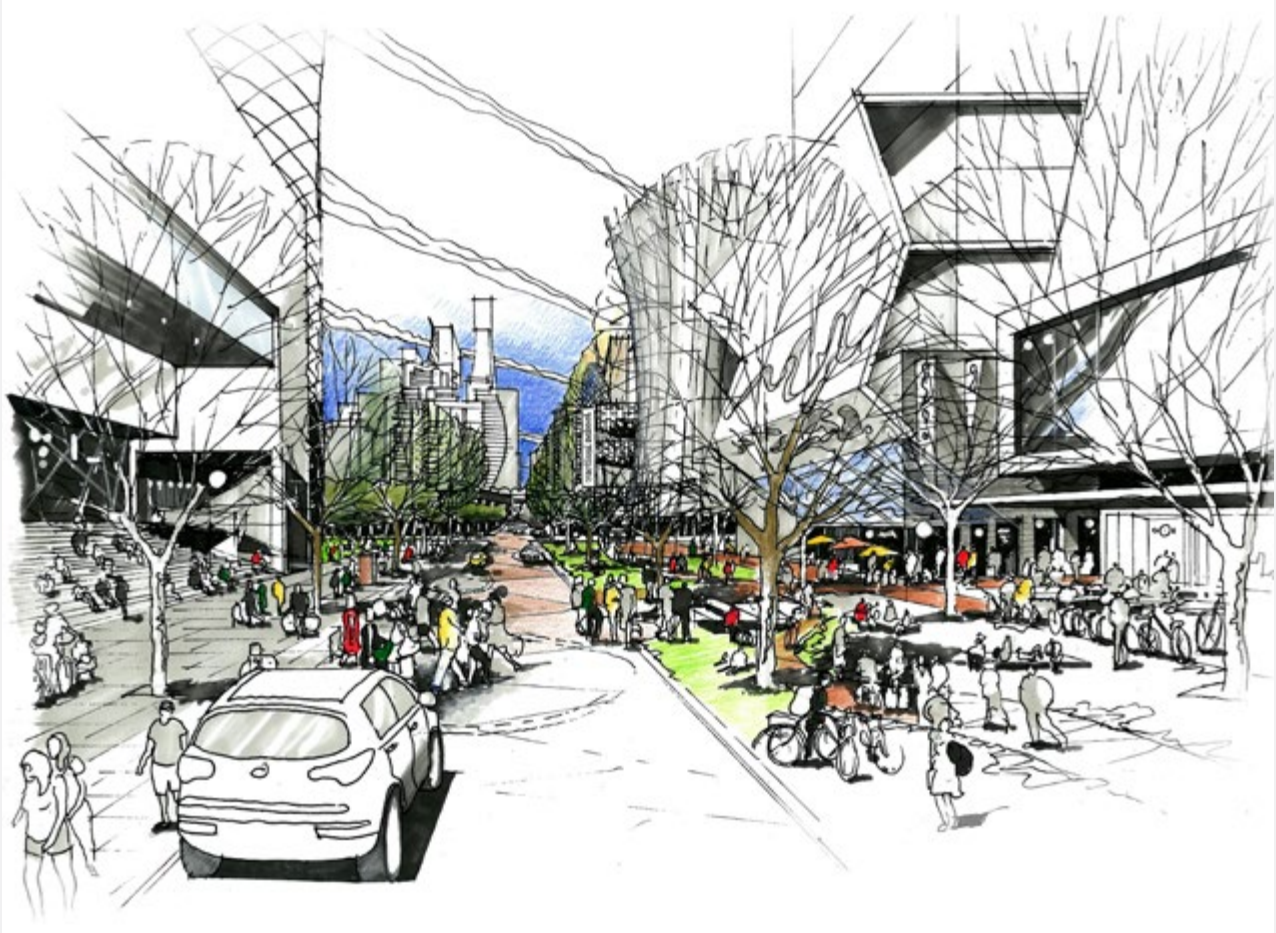
City of Melbourne policy	Assessment of Fishermans Bend Recast Vision against this City of Melbourne policy
Places for People	The City of Melbourne recommends that the recast vision is updated to make a commitment to adopting performance targets for Fishermans Bend.
Public Art Framework	The Public Art Framework should inform the future Fishermans Bend Framework Plan and future precinct planning work.
Public Lighting Strategy	The Public Lighting Strategy should inform future master planning work.
Reconciliation Action Plan	Action 2.8 in the Reconciliation Action Plan is to consult traditional owners on civic infrastructure and development projects. Public and stakeholder engagement by the Fishermans Bend Taskforce, through the life of the project, should involve traditional owners.
Road Safety Plan	The Road Safety Plan should inform the future Fishermans Bend Framework Plan and future precinct planning work.
Southbank Structure Plan	The City of Melbourne recommends that the recast vision is updated to articulate how Fishermans Bend relates to other urban renewal areas.
Total Watermark - City as a Catchment	The Fishermans Bend Recast Vision includes five sustainability goals including that Fishermans Bend will be “a water sensitive city”.
Transport Strategy	The Fishermans Bend Recast Vision acknowledges the importance of public and active transport in Fishermans Bend and is consistent with the City of Melbourne Transport Strategy.
Urban Ecology and Biodiversity Strategy	The draft Urban Ecology and Biodiversity Strategy should inform the future Fishermans Bend Framework Plan and future precinct planning work.
Urban Forest Strategy	The Urban Forest Strategy should inform the future Fishermans Bend Framework Plan and future precinct planning work.
Walking Plan	The Fishermans Bend Recast Vision acknowledges the importance of public and active transport in Fishermans Bend and is consistent with the City of Melbourne Walking Plan
Waste Management Strategy	The Fishermans Bend Recast Vision includes five sustainability goals including that Fishermans Bend will be “a low waste city”.
Zero Net Emissions by 2020	The Fishermans Bend Recast Vision includes five sustainability goals including that Fishermans Bend will be “a low carbon city”.

FISHERMANS BEND

RECAST VISION

The next chapter in Melbourne's growth story

Draft for consultation | May 2016



Environment,
Land, Water
and Planning



THE VISION FOR FISHERMANS BEND

“A thriving place that sets an example for environmental sustainability, enhanced liveability, diversity and innovation.”

THE NEXT CHAPTER IN MELBOURNE’S GROWTH STORY

- > Fishermans Bend is an unparalleled renewal opportunity at the heart of Melbourne. An area more than twice the size of the CBD, Fishermans Bend is the next chapter in Melbourne’s growth story.
- > A benchmark for sustainable and resilient urban transformation, Fishermans Bend is planned to be Australia’s largest urban renewal Green Star Community.
- > Melbourne is Australia’s fastest growing city and is set to become Australia’s biggest. Fishermans Bend will support this growth – providing 60,000 jobs and a range of well-serviced, high density housing options for 80,000 people.
- > Fishermans Bend will play a vital role in securing new high value jobs for Victoria, building on its legacy of world-leading technology and innovation.
- > New and improved connections will leverage Fishermans Bend’s strategic location between Port Phillip Bay, Yarra River and the CBD. It will boast unprecedented levels of walking, cycling and public transport connectivity that will set a new benchmark for Melbourne.
- > Heritage and culture will be celebrated and form the backdrop for a collection of diverse, mixed use places. Fishermans Bend will provide high quality open space, community services, schools, medical facilities, as well as retail, cultural and entertainment options to build on Melbourne’s acclaimed liveability.

CONTENTS

MINISTER'S FOREWORD	1
INTRODUCTION	3
FISHERMANS BEND IN CONTEXT	6
JOIN THE CONVERSATION	7
BUILDING ON THE STRATEGIC DIRECTIONS FROM <i>DRAFT VISION 2013</i>	8
WHAT COULD FISHERMANS BEND BE IN 2050?	11
MONTAGUE	12
LORIMER	16
SANDRIDGE	20
WIRRAWAY	24
EMPLOYMENT PRECINCT	28
WHO IS INVOLVED?	32

Disclaimer

City of Port Phillip and City of Melbourne council officers have provided guidance and advice during preparation of the vision document. Following the consultation period and finalisation of the vision the City of Port Phillip and City of Melbourne Councillors will have the opportunity to formally comment and/or endorse the final vision document.

Concepts, strategies and ideas build on the *Fishermans Bend Urban Renewal Area Draft Vision 2013*, and subsequent planning work for Fishermans Bend. The content of this document requires refinement and further assessment of options and feasibility, and will take into account community and stakeholder comment received in the consultation process.

This publication may be of assistance to you but the State of Victoria and its employees do not guarantee that the publication is without flaw of any kind or is wholly appropriate for your particular purposes and therefore disclaims all liability for any error, loss or other consequence which may arise from you relying on any information in this publication.

© The State of Victoria Department of Environment, Land, Water and Planning 2016



This work is licensed under a Creative Commons Attribution 4.0 International licence. You are free to re-use the work under that licence, on the condition that you credit the State of Victoria as author. The licence does not apply to any images, photographs or branding, including the Victorian Coat of Arms, the Victorian Government logo and the Department of Environment, Land, Water and Planning (DELWP) logo.

To view a copy of this licence, visit <http://creativecommons.org/licenses/by/4.0/>

Printed by: Department of Environment, Land, Water and Planning

ISBN 978-1-76047-141-5 (Print)

ISBN 978-1-76047-142-2 (pdf/online)

Accessibility

If you would like to receive this publication in an alternative format, please telephone the DELWP Customer Service Centre on 136186, email fishermansbend@delwp.vic.gov.au, or via the National Relay Service on 133 677 www.relayservice.com.au. This document is also available on the internet at www.delwp.vic.gov.au

MINISTER'S FOREWORD



Cities are all about people.

It's therefore up to planners to create places that make it easier for people of all ages and backgrounds to live and work together.

Done right, planning can help make a city more liveable, accessible, sustainable and creative. Done wrong, it can destroy community and character.

Melbourne has around 640ha of land suitable for renewal within five kilometres of the CBD. With our population projected to hit 8 million by 2050, we need to use this space wisely.

That's why it's vital to plan carefully before developing or redeveloping a part of the marvellous city that is Melbourne. That's why, as a community, we must make the most of the unique opportunity to revision Fishermans Bend.

Fishermans Bend has a rich history. It was the birthplace of Australia's aviation industry and, for decades, was the heart and soul of Australia's automotive manufacturing. Now, we have the chance to make it a benchmark for smart, sustainable development and high-density community living.

For that to occur, we need to tackle challenges such as public transport, schools, community services and public spaces now, rather than putting up residential towers and hoping for the best.

In February this year, I released the Government's response to the *Fishermans Bend Advisory Committee Report 1*—and made a commitment to recast the vision for Fishermans Bend.

Using the *Draft Vision 2013* as a baseline, the Fishermans Bend Taskforce worked with State Government departments and agencies, as well as officers from the City of Port Phillip and the City of Melbourne to create a vision that would make our newest inner-city community a creative, accessible, sustainable and liveable place for everyone from young families to innovative businesses.

Ultimately, though, this document is just the beginning.

I urge you to get involved in this public conversation about Fishermans Bend: to share what you love about Melbourne, and your vision for the future.

A handwritten signature in blue ink that reads "Richard Wynne". The signature is fluid and cursive.

The Hon Richard Wynne MP
Minister for Planning



Coffee shop in the Employment Precinct

Source: Metropolitan Planning Authority.

INTRODUCTION

The *Fishermans Bend Recast Vision* has been prepared by the Fishermans Bend Taskforce (the Taskforce) to propose a future for Fishermans Bend and its distinctive precincts.

The *Fishermans Bend Recast Vision* responds to a recommendation from the Ministerial Advisory Committee (MAC) to refresh and redefine the vision for Fishermans Bend. The Advisory Committee recognised the community's broad support for the *Fishermans Bend Urban Renewal Area Draft Vision 2013 (Draft Vision 2013)*. The MAC advised that any new vision should use the *Draft Vision 2013* as a baseline and draw on wider economic, social and environmental influences on Fishermans Bend.

The Taskforce consulted with officers from the City of Port Phillip, City of Melbourne and a range of government departments and agencies to prepare the *Fishermans Bend Recast Vision*.

It is now time for public discussion.

Any and all public feedback will inform the development of a final vision for this landmark project.

The *Draft Vision 2013* includes 10 Strategic Directions for Fishermans Bend, which form a baseline for the *Recast Vision*:

1. The creation of 21st century jobs
2. The timely provision of infrastructure
3. A place that is easy to get around
4. A vibrant mix of uses and activities
5. Distinctive and diverse neighbourhoods
6. A great place for families
7. A high quality built environment
8. Smart environmental solutions
9. Environmental constraints addressed
10. Strong partnerships and effective governance

THE CHANGED CONTEXT FOR THE RECAST VISION

The Recast vision builds on the *Draft Vision 2013* but recognises the changed context, including:

Acknowledging job diversity with the addition of the 205 hectare Employment Precinct

In April 2015, with the recast of Fishermans Bend, the Employment Precinct became part of the Fishermans Bend urban renewal project. This almost doubled the size of the urban renewal area, creating an opportunity to integrate the planning of the precinct with the rest of Fishermans Bend. Currently, the Taskforce is in the pre-planning phase for this precinct—establishing key data and information (including but not limited to assessing site conditions and constraints and identifying development options and opportunities).

Aligning with the refresh of *Plan Melbourne*, our city plan to 2051: Transport

Fishermans Bend needs to be designed to encourage residents and commuters to get around by walking, cycling or catching public transport. The Victorian Government—via the Taskforce—will develop a flexible and adaptable plan that meets this need. It’s expected that transport infrastructure will need to be invested in before, during and after residential and business construction.

The Taskforce and Government partners—such as the Department of Economic Development, Jobs, Transport and Resources, VicRoads and Public Transport Victoria—are commissioning a number of studies to investigate options for delivering improved transport connections into Fishermans Bend.

The studies will take into account freight transport, precinct parking, water transport, transport modeling, metro rail, crossing the Yarra River and road design.

Once the studies are completed, the Taskforce will hold public events so that the community can be part of informed discussions about the transport needs of Fishermans Bend.

These studies, together with public feedback, will form the basis of an Integrated Transport Plan for the area.

Building resilience to climate change

Plan Melbourne 2016 will take stronger action to reduce greenhouse gas emissions and reduce our exposure to climate change impacts. With that in mind, Fishermans Bend needs to respond to climate change challenges and build resilience by adopting strategic environmental principles, improved hazard mapping, environmentally sustainable design, ‘greening the city’ methods and renewable energy.

Housing supply, diversity and choice

Plan Melbourne 2016 will have a stronger emphasis on getting more diverse and affordable homes built—articulating long-term land use policies and reforms to meet projected housing needs and expand housing choice and affordability.

Sustainability goals

Fishermans Bend will be:



a low carbon city



a water sensitive city



a climate adept city



a connected and liveable city



a low waste city

Sustainability and energy efficiency measures

The Taskforce is committed to working with the Green Star Communities tool to guide sustainability planning for Fishermans Bend. Planning for Fishermans Bend will address the key Green Star Communities categories of governance, liveability, economic prosperity, environment and innovation.

The changing built form environment including scale and density

The Victorian Government is reforming planning controls in the central city area to ensure developments enhance Melbourne's long-term liveability. The proposed controls—developed in conjunction with the City of Melbourne—protect important public spaces (such as the Yarra River) from overshadowing and establish a reasonable floor-area ratio for new developments. Height limits are also proposed for identified special-character areas. The planning for Fishermans Bend will be informed by these reformed controls—ensuring the liveability of the area.

A SHARED CONVERSATION

Good planning is all about balance—balancing public and private spaces, commercial and residential uses, local and citywide needs. That's why the transformation of Fishermans Bend depends on a shared understanding of the various interests, aspirations and values of local residents and businesses, the broader Melbourne community, local and state governments and the development community. This will ensure that the interests of all stakeholders will be considered in the planning for the area. The best way to find common ground on the competing needs of Fishermans Bend is through a series of open and informed conversations.

The Fishermans Bend Recast Vision is the next step in that conversation, building on the 10 Strategic Directions of the *Draft Vision 2013*.

The recast draft visions have been written from a future perspective of 2050, when Fishermans Bend could have 80,000 new residents and 60,000 workers. Known as backcasting, this technique describes a future we would like to see, then identifies the strategies required to make that future attainable.

Imagine yourself in the Fishermans Bend of 2050. Do you like what you see? What needs to be added, changed or removed?

This is your future community, and we want you to be a part of its planning!

FISHERMANS BEND IN CONTEXT

Fishermans Bend is Australia's largest urban renewal area. When the project was declared in July 2012, the renewal area amounted to 205 Ha. In April 2015 the Victorian Government announced a recast of the project, which included the addition of the Employment Precinct, this expanded the size of the renewal area to 455 Ha.

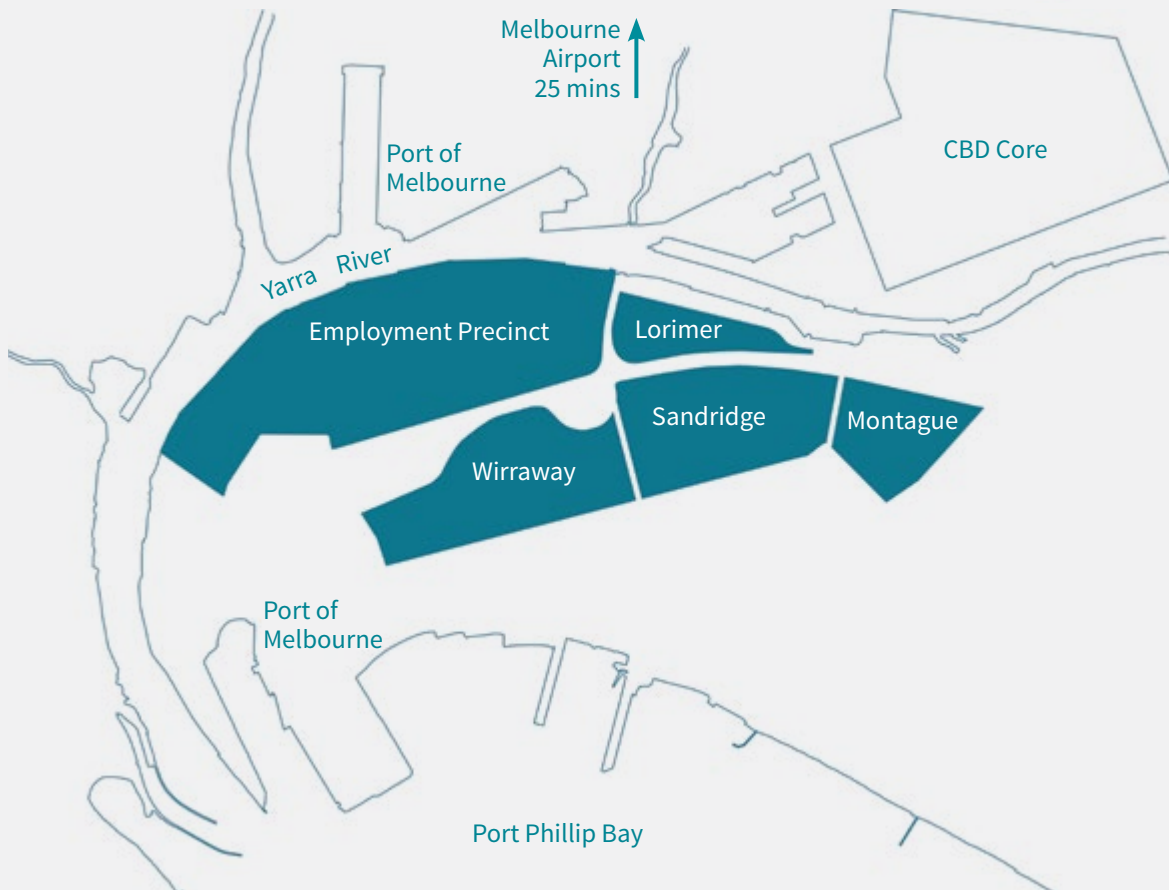
Plan Melbourne 2016 anticipates that Melbourne's population will increase from 4.4 million to 7.7 million by 2051. Fishermans Bend will play an important role in the growth and prosperity of Melbourne, supporting 80,000 residents and 60,000 jobs¹.



Victorian context



Melbourne context



Local context

¹ *Draft Vision 2013* proposed 40,000 jobs for Fishermans Bend. The inclusion of the Employment Precinct has increased this jobs target to 60,000.

JOIN THE CONVERSATION

- 1 IS THIS A VISION THAT REFLECTS YOUR OWN ASPIRATIONS FOR THE FUTURE OF FISHERMANS BEND?
- 2 ARE THE 10 STRATEGIC DIRECTIONS STILL RELEVANT TODAY?
- 3 WHAT CAN BE CHANGED OR IMPROVED ABOUT THE VISION?

HAVE YOUR SAY

You can find out more by:


- attending one of our community information activities
- viewing details about the community information activities on our website.
Visit: www.fishermansbend.vic.gov.au


You can comment by:

- completing an online survey
- making a submission in writing and email it to fishermansbend@delwp.vic.gov.au, or send it to:

Fishermans Bend Taskforce
Department of Environment, Land, Water and Planning
GPO Box 500
East Melbourne Victoria 8002


- Opportunities to comment on the *Recast Vision* close at 5pm, Friday 1 July 2016. We will review all feedback before finalising the *Recast Vision*.
- There are many tools and resources on our website, www.fishermansbend.vic.gov.au that you can use to inform your feedback on the *Recast Vision*, including:
 - Document Library – a place to view some of the reference material for Fishermans Bend
 - Frequently Asked Questions – contains a range of questions and answers about Fishermans Bend

 www.fishermansbend.vic.gov.au

 fishermansbend@delwp.vic.gov.au

 @fishermans_bend

 Victorian Government Contact Centre – 1300 366 356

 Translation Service – 03 9280 0787

Draft Vision 2013 included 10 Strategic Directions, which outlined key aspirations and qualities for Fishermans Bend. These 10 Strategic Directions will continue to inform the planning for Fishermans Bend and underpin the *Fishermans Bend Recast Vision*.



1

The creation of 21st century jobs

Fishermans Bend enhances its competitive economy through the creation of additional jobs and businesses by capitalising on its strategic location between the CBD and the Port.



2

The timely provision of infrastructure

Fishermans Bend is supported by a funding model that promotes early delivery of catalyst infrastructure and balances transitioning of existing industries.



3

A place that is easy to get around

Fishermans Bend is a connected and legible precinct where peoples' preference for getting around is by walking, cycling and public transport networks that are integrated into the CBD and surrounding suburbs.



4

A vibrant mix of uses and activities

Fishermans Bend supports a vibrant mix of uses by providing a balance of employment generation, housing choice and community facilities that are accessible to Fishermans Bend residences and their surrounding neighbours.



5

Distinctive and diverse neighbourhoods

Fishermans Bend has a unique public realm situated between the Yarra and the Bay with a diverse and distinctive neighbourhoods that foster a sense of place through their safe, legible and inviting streets.



6

A great place for families

Fishermans Bend is a place for people of all ages through the creation of diverse, liveable and family friendly communities.



7

A high quality built environment

The neighbourhoods of Fishermans Bend have a high quality built environment that promotes best practice environmentally sustainable design with compact, high density urban form at human scale.



8

Smart environmental solutions

Fishermans Bend delivers integrated and efficient energy, water and waste infrastructure through cost effective, modern and sustainable environmental solutions.



9

Environmental constraints addressed

Fishermans Bend allows for the early consideration of precinct-scale environmental constraints with cost effective, collaborative solutions to achieve a more efficient outcome.



10

Strong partnerships and effective governance

Governance structure and approval processes will promote best-practice design and construction methods and gives planning certainty to the development industry.



Lensloft Aerial Photography

WHAT COULD FISHERMANS BEND

BE IN 2050?

Fishermans Bend celebrates and showcases the best that Melbourne has to offer: great places, world-class design, thriving businesses and healthy communities. As Australia's largest urban renewal area, Fishermans Bend is celebrated as an exemplar of sustainable and resilient urban transformation.

Bayside, riverside and cityside, Fishermans Bend occupies a unique position in Melbourne, between the city and the bay, with connections to surrounding suburbs and Melbourne's growing west.

Melbourne is now a city approaching 8 million people and experiences more hot days and extreme weather events. The city also operates in an increasingly connected and competitive global environment. Fishermans Bend plays a vital role in ensuring that Melbourne meets the challenges and seizes the opportunities of this changing world.

455 hectares of land, only minutes from Melbourne's CBD, has been transformed into a series of diverse, walkable, high-density neighbourhoods that support around 80,000 residents and 60,000 workers. Fishermans Bend is a world-class location for high technology, education and research jobs that are an integral part of Australia's economy.

Fishermans Bend provides safe, welcoming and vibrant places for all people, including families. A diverse mix of

housing options, public spaces and community facilities are integrated with a range of innovative industries and businesses. Leafy streets, intimate laneways and great public spaces frame contemporary architecture—celebrating both Aboriginal and European heritage and culture.

A generous tree canopy keeps Fishermans Bend cool in summer. Not only are the public spaces green – so, too, are the buildings. The buildings incorporate vertical and roof-top greening—saving water while supporting a rich biodiversity throughout the area. A network of leafy boulevards and green links connect neighbourhoods and public spaces, providing a focus for city life as well as high quality public transport, walking and cycling infrastructure.

An underground train line—together with trams and high-frequency buses—connect Fishermans Bend to Melbourne's transport network. Efficient connections to the Port of Melbourne are also provided. Car parking has been reduced. In fact, less than one-in-five trips are now made by private car. Instead, the efficient and direct public transport network reduces traffic congestion and carbon emissions.

Fishermans Bend has transformed into a series of distinctive places that reflect Melbourne's past and define its future.



MONTAGUE

A diverse and well-connected mixed-use precinct celebrating its significant cultural and built heritage, and network of gritty streets and laneways





Buckhurst Street, Montague
Artistic impression

MONTAGUE IN 2050

Montague is a diverse and well-connected mixed-use precinct with a range of buildings. It comprises of two neighbourhoods, each with their own character and identity.

Located between the Westgate Freeway and the 109 light rail route, the northern neighbourhood has a strong mixed used focus, including residential and office activity. Most of the buildings are tall, similar to those in the CBD, and are carefully designed to achieve human scale at street level, generally with towers set back on active podiums.

The southern neighbourhood has range of building types. Its network of gritty streets and laneways support a myriad of businesses, including shops, cafés and creative industries that contribute to the neighbourhood's vibrant and eclectic character. The area is safe and lively, both day and night, with street art and a strong pedestrian focus. Heritage and character buildings have been adapted to provide high amenity housing and commercial opportunities. Lower scale residential and commercial buildings along City Road and Boundary Street ensure that the precinct is well integrated with its neighbours.

Montague is well linked to the CBD and surrounding areas. Light rail, as well as high frequency buses make it easy to connect with friends, family and

employment destinations. Ferrars Street provides a pleasant walking and cycling connection to the South Melbourne Market as well as the Yarra River and South Wharf precinct. There are also strong links to Sandridge and Lorimer, as well as Albert Park, with its major recreational and sporting facilities. The open space near the corner of Buckhurst and Ferrars Street is a key landscape asset for the precinct, connected to a series of public spaces and the Buckhurst Street green spine.

A community hub, co-located with the South Melbourne Ferrars Street Primary School, is a focus for the local community. It is supported by a secondary community hub co-located at the Montague Continuing Education Centre. The Buckhurst Street green spine connects these two hubs with a series of complimentary activities, creating the heart of Montague through an activated public realm. Together these amenities have established Montague's southern neighbourhood as a diverse and family friendly community.

Buckhurst Street is a safe and pleasant tree lined spine with strong cycling and walking connections to Bay Street, Port Melbourne and the City. It is a cosmopolitan destination for retail and dining, providing a focus for community interaction.



Aerial photograph of Montague today

Not to scale

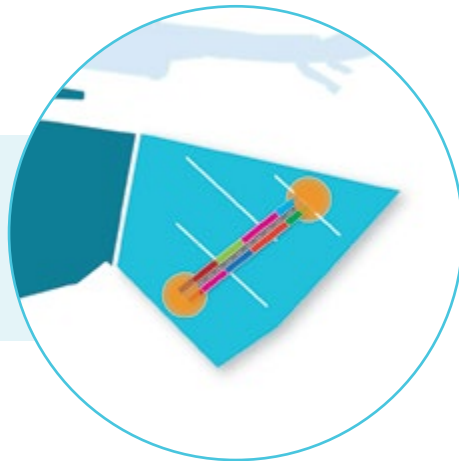
PRECINCT DIRECTIONS

Celebrate heritage buildings and urban form
including fine-grain built form and laneways

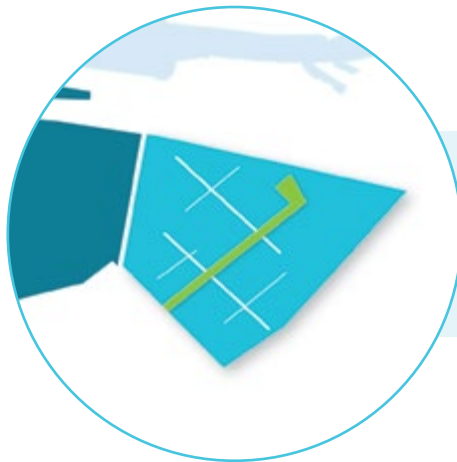


Strengthen links to surrounding places
including South Melbourne, Albert Park, Bay Street and South Wharf

Support a vibrant Buckhurst Street anchored by community hubs
through mixed-use developments, active street edges and high quality public realm



Establish a green spine through the precinct
along Buckhurst Street



Support two distinctive neighbourhoods
to the north and south of the 109 tram line



LORIMER

A vibrant, mixed use precinct close to the Yarra River and connected to Melbourne's CBD, Docklands and emerging renewal areas





View to Lorimer Place, Lorimer
Artistic impression

LORIMER IN 2050

Lorimer, together with the Yarras Edge Precinct in Docklands, is a keystone central to Melbourne's identity as a river city. River crossings for walking, cycling and public transport continue the legacy of connecting Melbourne – linking Fishermans Bend to the Docklands, the CBD, and further afield to the renewal areas around North and West Melbourne. Water transport links Lorimer to the CBD, Docklands and the Employment Precinct.

The precinct promotes healthy and diverse lifestyle choices to the full. A linear open space extends from the river, through the centre of Lorimer, and beyond to the Employment Precinct. This provides a safe walkable connection between jobs, homes, community facilities, shopping and entertainment. It links a series of public spaces with different roles and characters, provides a recreational corridor and a significant biodiversity connection to Westgate Park. It ensures high-density living in well-designed homes is appealing and complemented by great places to meet and gather in the public realm.

Lorimer Place is the heart of the precinct, characterised by lower scale development incorporating cafes, retail, and small businesses and local start-ups. The high-frequency east-west light rail link makes it easy to get to this centre from the CBD and the Employment

Precinct. Sandridge can be reached by a short walk or bike ride along Ingles Street, which is now an active and landscaped boulevard.

Lorimer Street provides increased east-west accessibility, with a focus for walking, bike riding and public transport. This aspiration became reality when the dedicated freight route from Webb Dock was completed. It's just like other CBD streets with shops, offices, and great public spaces. Smaller streets and laneways link to Lorimer Street, inviting people to explore the precinct or wander down to the river edge. Tall buildings are located closer to the freeway. They are designed to provide a buffer to the freeway and form an attractive backdrop to the precinct.

The community facilities in Lorimer are valued, and often used by residents and workers in Docklands as well as the rest of Fishermans Bend. Developers partner with government to provide space for community services in their buildings. Facilities such as schools, libraries and medical centres are located within commercial and residential buildings, contributing to the vibrant mixed-use nature of the precinct.

Lorimer enjoys a real sense of community. People of all backgrounds and ages find Lorimer a welcoming and convenient place to live and work.



Aerial photograph of Lorimer today

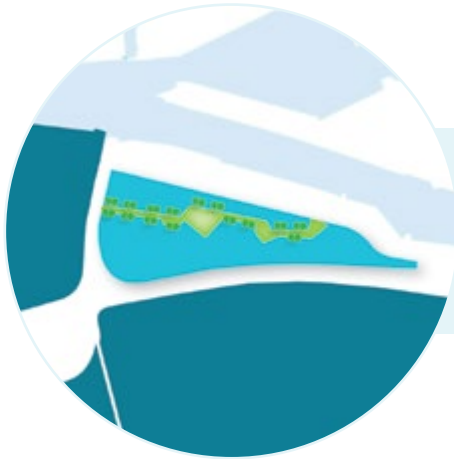
Not to scale

PRECINCT DIRECTIONS

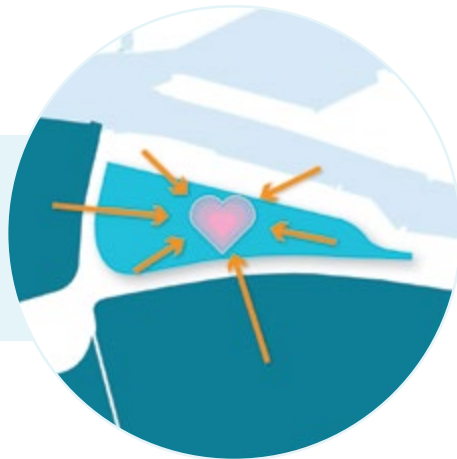
Connect to the CBD and suburbs to the north
including Docklands, North Melbourne
and West Melbourne



Link key public spaces with a green spine
providing opportunities for recreation,
active transport and biodiversity



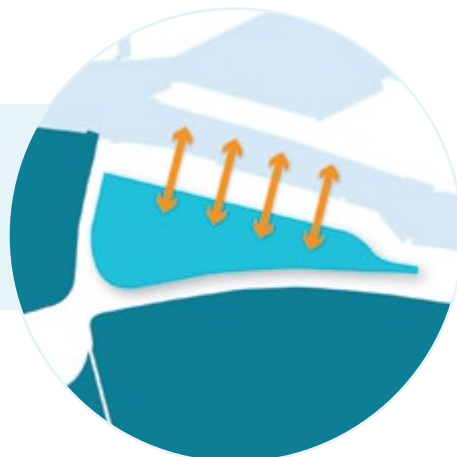
Establish a neighbourhood heart
as a low scale, fine grain centre of activity



Support an east-west active and public transport link
to connect to the CBD and the Employment Precinct

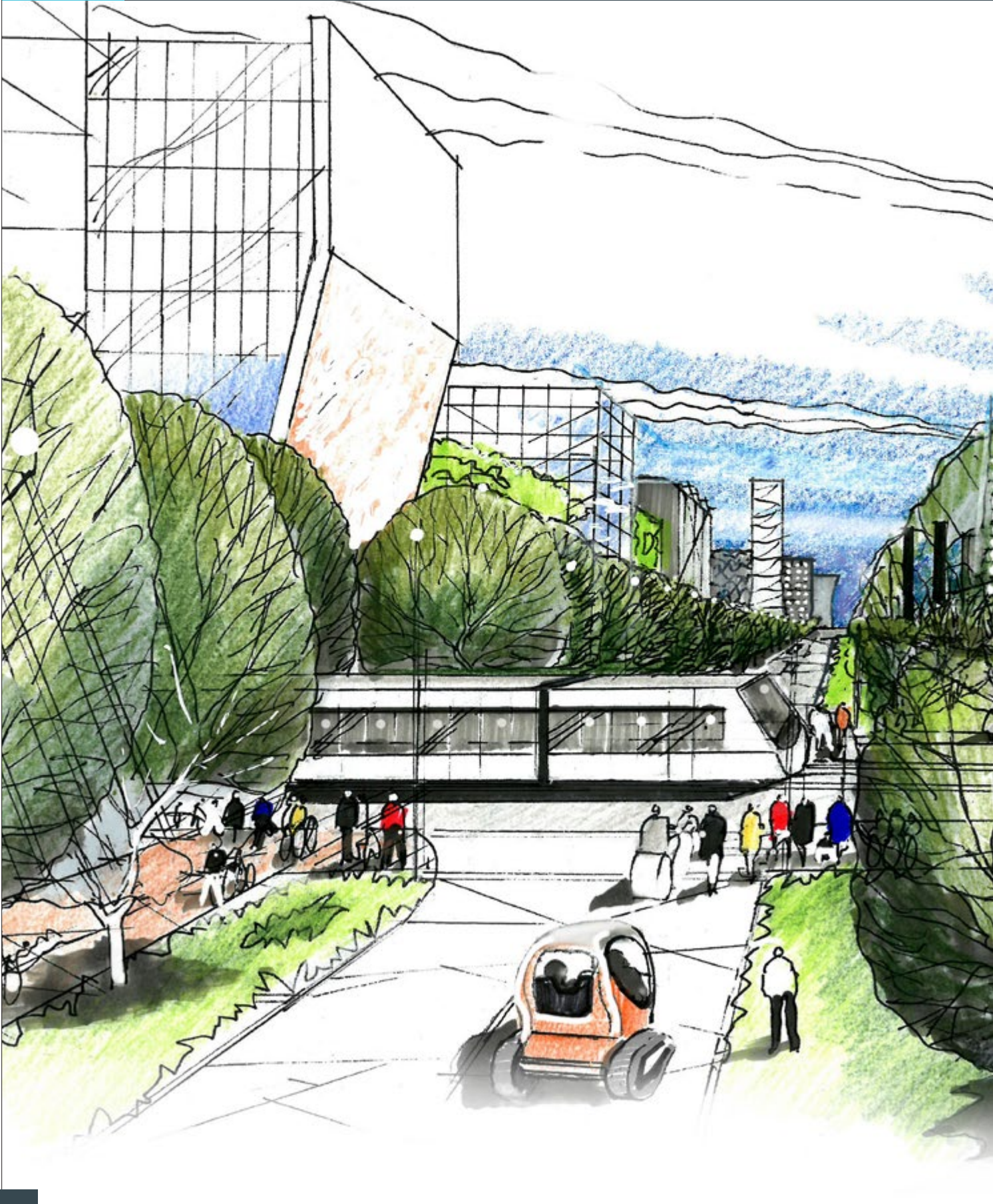


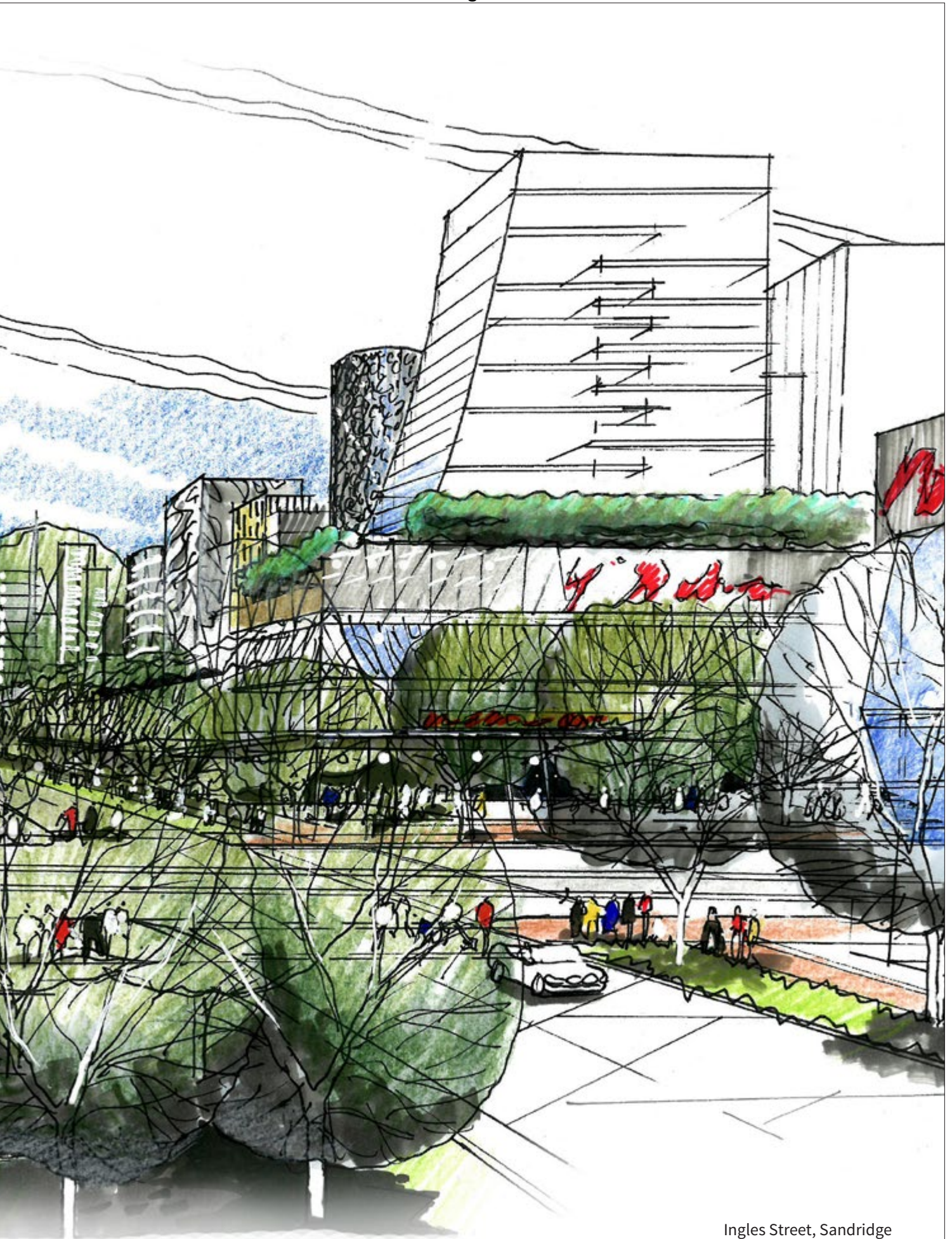
Embrace the river
by improving connections across Lorimer Street
and through Yarras Edge



SANDRIDGE

One of Melbourne's premium office and commercial locations, balanced with housing and retail





Ingles Street, Sandridge
Artistic impression

SANDRIDGE IN 2050

Sandridge is one of Melbourne's premium office and commercial locations, balanced with housing and retail. It provides high quality vibrant streets and public spaces, well served by public transport, walking and cycling links.

Professional services and creative businesses are attracted to Sandridge – the commercial sized floorplates in many of the buildings are ideal for their needs. Proximity and good connections to the CBD, Docklands, Employment Precinct, South Melbourne and Domain ensure that businesses in Sandridge can access a wide range of clients and services.

Architecturally diverse towers north of and along the Fennell-Plummer Street boulevard extend Melbourne's skyline towards Port Phillip Bay. These buildings are designed to provide an attractive street level experience and protect public spaces from overshadowing. Residents and workers in these towers enjoy spectacular views towards the CBD, Port Phillip Bay and across the surrounding suburbs. The scale of built form is lower closer to Garden City and Port Melbourne, to respect the existing scale of these areas.

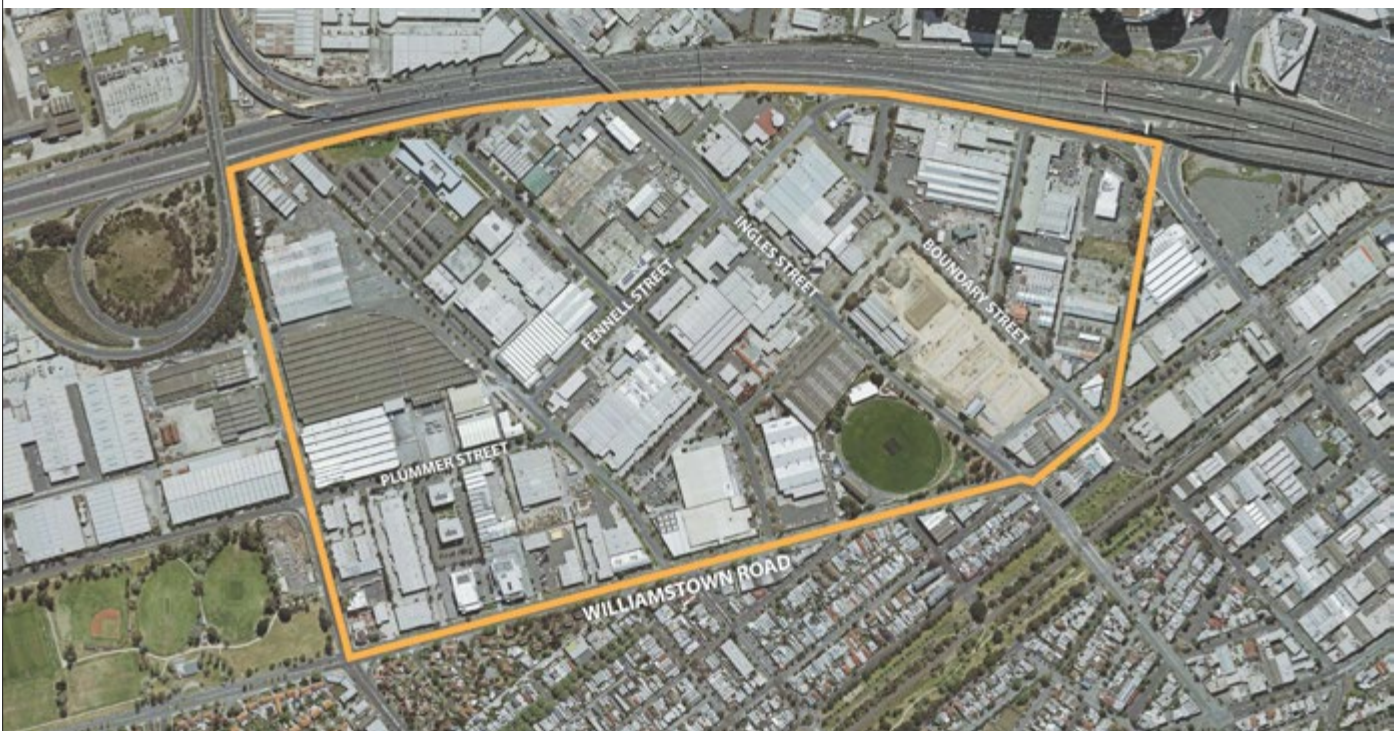
Public spaces and larger buildings around Fennell and Ingles Streets integrate with the Ingles Street bridge, seamlessly linking Sandridge to Lorimer. The transport

network in Sandridge, including the Plummer-Fennell Street light rail corridor and enhanced bus routes provide safe and convenient connections within and outside Fishermans Bend. Wide footpaths and dedicated cycle routes along tree lined streets encourage healthy active transport.

A series of public spaces, ranging from piazzas, squares, event spaces, sporting grounds, intimate formal gardens and playgrounds are linked through a network of boulevards, living streets, laneways and shared paths.

North Port Oval, with its historic grandstand, is a key anchor for the local community and supports many civic and recreational uses. State and local governments have worked together with the sports clubs that use North Port Oval to expand the ground and its program of uses, and improve the quality of facilities.

Sandridge is an exemplar of sustainable and resilient mixed-use development, and is the lynchpin for Fishermans Bend's identity as a world class urban renewal area.



Aerial photograph of Sandridge today

Not to scale

PRECINCT DIRECTIONS

Develop multi-modal transport corridors
to connect with surrounding suburbs



Focus density around public transport nodes
to encourage public transport use and promote commercial activity



Celebrate North Port Oval
as an anchor for the community



Encourage master planning of large sites
to promote through-block links and development of privately owned public spaces



Support commercial development
to grow jobs and take advantage of large land parcels



WIRRAWAY

A family friendly inner city neighbourhood close to the Bay and Westgate Park





Plummer Street, Wirraway
Artistic impression

WIRRAWAY IN 2050

Wirraway is a family friendly neighbourhood. Small parks, plazas and playgrounds throughout the neighbourhood are linked by leafy streets lined with different types of shops, businesses and homes.

Wirraway provides a choice of diverse housing, include small to medium scale apartment buildings. There are also some higher-rise developments with views to surrounding suburbs and the Bay. Residential developments provide intimate scaled green spaces where people can meet, gather and relax. The contemporary architecture in Wirraway sensitively references the area's cultural and industrial heritage.

JL Murphy Reserve is a major green space in Fishermans Bend. It is a focus for recreation, active throughout the day and evening, with organised sports and leisure activities. The Reserve incorporates best practice stormwater management features, which contribute to Fishermans Bend's status as a model for water sustainability. Local schools use JL Murphy Reserve during the day for outdoor activities, sharing the space with the broader community.

Wirraway is known for its thriving arts scene. Small galleries, art and design centres and cultural facilities attract visitors from all over Melbourne, as well as tourists from further afield. The arts culture of Wirraway is a key element of Fishermans Bend's success as a place for innovation and creativity. Service industries and research

and development hubs build off connections to the Employment Precinct. There is a real diversity of workers here.

The heart of Wirraway is located near the intersection of two important public transport routes on Plummer and Salmon Streets. It includes many small businesses, speciality retail, restaurants and cafés, providing an attractive and unique shopping experience along Plummer Street Boulevard. Regular trams along the Boulevard ensure that Wirraway is well connected to the city and beyond.

This local centre has higher densities than some other parts of Wirraway, with slender commercial towers punctuating the generally lower rise skyline. Buildings step down towards Williamstown Road to respect Garden City's low scale built form.

Wirraway and the Port of Melbourne coexist comfortably, with popular cycle and walking routes providing an accessible landscaped buffer. People can easily walk to Sandridge Beach, Westgate Park, and back through Fishermans Bend towards the city.

This is a place for people of all ages – from young people who have great access to schools and open space, adults who work and meet in well designed public spaces and buildings, and older people who can carry out active lives with great recreational and cultural facilities. Wirraway is a place for everyone.

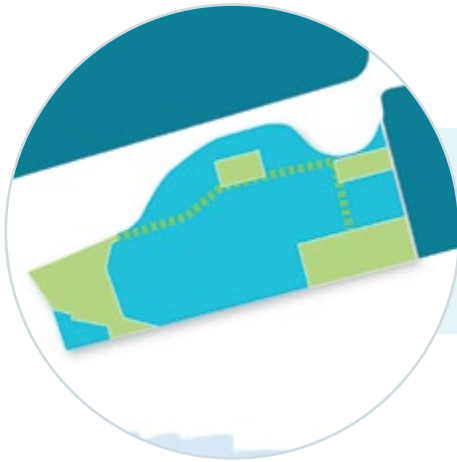
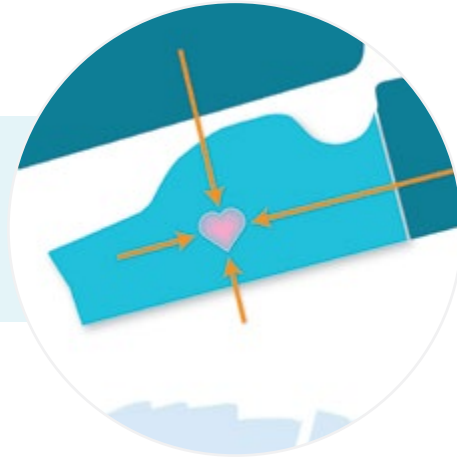


Aerial photograph of Wirraway today

Not to scale

PRECINCT DIRECTIONS

Establish a diverse local centre
at the corner of Plummer and Salmon Streets



Provide green links
between new and existing public spaces

Support arts and cultural activity
as a driver of creativity and innovation
throughout the area



Connect to surrounding precincts and destinations
including the Sandridge, the Employment Precinct,
Garden City and Sandridge Beach

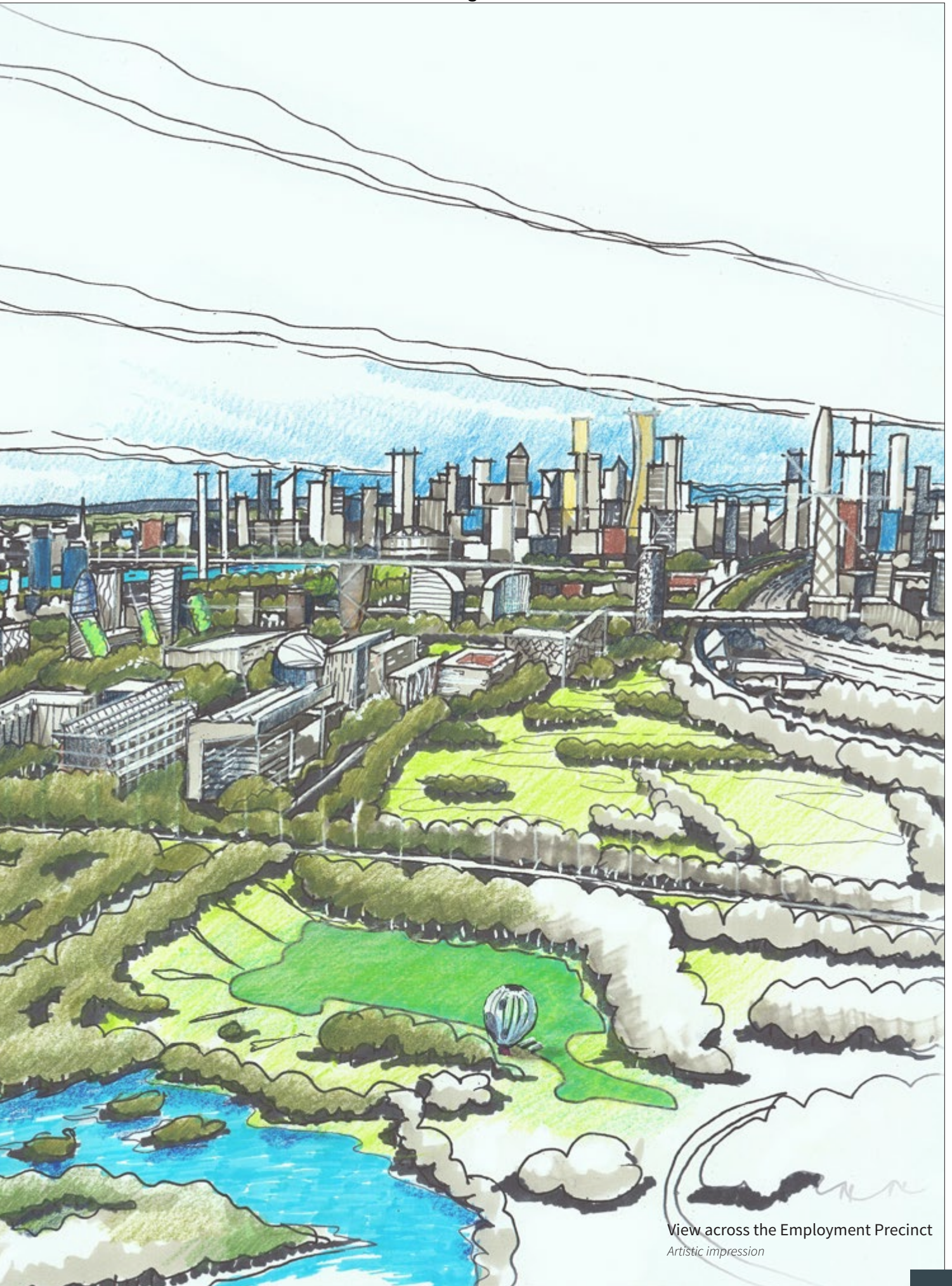
Encourage diverse building types and scales
to support family-friendly neighbourhoods



EMPLOYMENT PRECINCT

Australia's leading design, engineering and advanced manufacturing precinct





View across the Employment Precinct
Artistic impression

EMPLOYMENT PRECINCT IN 2050

The Fishermans Bend Employment Precinct is a world-renowned location for innovative industries, attracting international investment and producing world-leading research, engineering, technology and products. Its economy is highly productive and profitable, but with a low environmental impact, and complements Fishermans Bend as a whole through compatible land uses.

World-class transport and IT infrastructure enhances the daily experience for workers and visitors alike. The precinct is close to the CBD and Docklands, and has easy access to the Port of Melbourne and Melbourne Airport, enjoying proximity to the West Gate Freeway and CityLink. Its strategic location in Melbourne makes this an attractive place to work for highly skilled professionals. The light rail and high frequency bus routes connect people to Melbourne's public transport network, reducing travelling times and costs. A freight transport connection ensures the ongoing efficient operation of The Port of Melbourne.

The precinct's broad spectrum of complementary economic sectors supports Melbourne's global competitiveness in high-tech advanced manufacturing, research and technology. Areas of expertise include aerospace, defence, education, transport, biotechnology, information technologies and creative industries.

Melbourne's transition into a resilient and sustainable city is showcased here. The Employment Precinct supports a range of specialist technical and creative services, located throughout Fishermans Bend.

This is a great place to work, learn and visit. Purpose-built labs, campuses, offices and education spaces sit alongside a public realm of exceptional standard. Conversations and ideas are as likely to happen in streets, cafés, and piazzas or by the water, as they are in the boardroom. The Employment Precinct boast a rich array of active and public transport options, including water transport, which enables easy access to neighbouring suburbs and further afield to Docklands, Southbank and the CBD. Many of the people who work in the precinct live close by, with their children attending schools there as well.

The green spaces contribute to high levels of biodiversity and are 'green lungs' for the area, with tree-lined streets and parks for workers. A green link extends from Lorimer, through the Employment Precinct to Westgate Park, forming a transport and biodiversity corridor. The rate of water consumption in the area is 50 percent less than that of broader Melbourne, thanks to the integrated water recycling facility. A hub of innovation, the Employment Precinct is a catalyst for Melbourne's sustainable growth.



Aerial photograph of Employment Precinct today

Not to scale

PRECINCT DIRECTIONS

Improve the public transport infrastructure
to increase accessibility



Increase global connectivity
through world class information technology infrastructure

Encourage businesses that support innovation
including professional services and creative industries



Provide high quality public realm
to ensure the Employment precinct is an attractive
place to work, learn and invest

Support best-practice management
of water, waste and energy



WHO IS INVOLVED?

THE MINISTERIAL ADVISORY COMMITTEE

An independent Ministerial Advisory Committee (MAC) was announced on 21 July 2015 to advise the Minister for Planning on Fishermans Bend.

The MAC reviewed the planning process to date for Fishermans Bend and provided a report to the Minister for Planning in October 2015. The report included 40 recommendations to improve planning for Fishermans Bend.

The Minister for Planning approved 34 of these recommendations and six in part in February 2016.

The MAC will continue to produce reports to provide independent advice on the planning and future of Fishermans Bend as the Taskforce progresses through the recommendations.

The MAC report can be found at www.delwp.vic.gov.au/fishermans-bend.

THE TASKFORCE

The Taskforce comprises staff from a range of State Government departments and agencies, City of Melbourne and City of Port Phillip. The Taskforce is working with all stakeholders as well as the local and future communities to develop a blueprint for transforming Fishermans Bend.

The mission of the Taskforce is to build on the legacy and assets of Fishermans Bend to shape the next chapter in Melbourne's growth story.

The Taskforce principles

A set of principles underpin the work of the Taskforce in delivering our mission:

- Support diversity
- Improve connectivity
- Celebrate and respect culture and heritage
- Encourage adaptive design
- Build resilience
- Embed sustainability
- Promote partnerships and investment

These principles have informed the development of the *Fishermans Bend Recast Vision* and will continue to drive the work of the Taskforce.

Fishermans Bend Taskforce



Taskforce partners

-  www.fishermansbend.vic.gov.au
-  fishermansbend@delwp.vic.gov.au
-  [@fishermans_bend](https://twitter.com/fishermans_bend)
-  Victorian Government Contact Centre – 1300 366 356
-  Translation Service – 03 9280 0787

