

A20.005

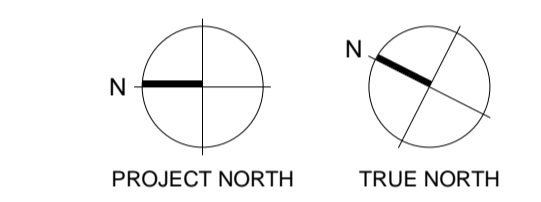
All dimension to be verified on site before producing shop drawings or commencing any work. Do not scale. The copyright of this drawing remains with Warren and Mahoney Australia Living Pty Ltd.

Revisions

- A 07.21.23 Town Planning Submission
- B 07.12.23 Town Planning RFI

Notes

- Indicates privacy screen - Max 25% openings and minimum 1.7 high from FFL
- Indicates fixed obscured glazing minimum 1.7m high from FFL
- # Indicates full height angled shroud to avoid overlooking
- Area calculations based on Method of Measurement Residential from PCA.
- Balconies on General arrangement floorplans measured to external face of the dominant portion of the balustrades. Refer to apartment types for Usable balcony areas clear of obstruction.



Consultants

- Armitage Jones
Project Manager
- TTW
Structural Engineer
- ARUP
Services Engineer
- RED FIRE
Fire Engineer
- ARCADIA
Landscape Architect
- HIP V HYPE
ESD Engineer
- Client
AsheMorgan
- Warren and Mahoney Living
Australia Pty Ltd
- Level 3, 380 Collins Street
Melbourne VIC 3000
Australia
Phone + 61 3 8547 6977

Registered Architects and Designers
www.warrenandmahoney.com
Project Title

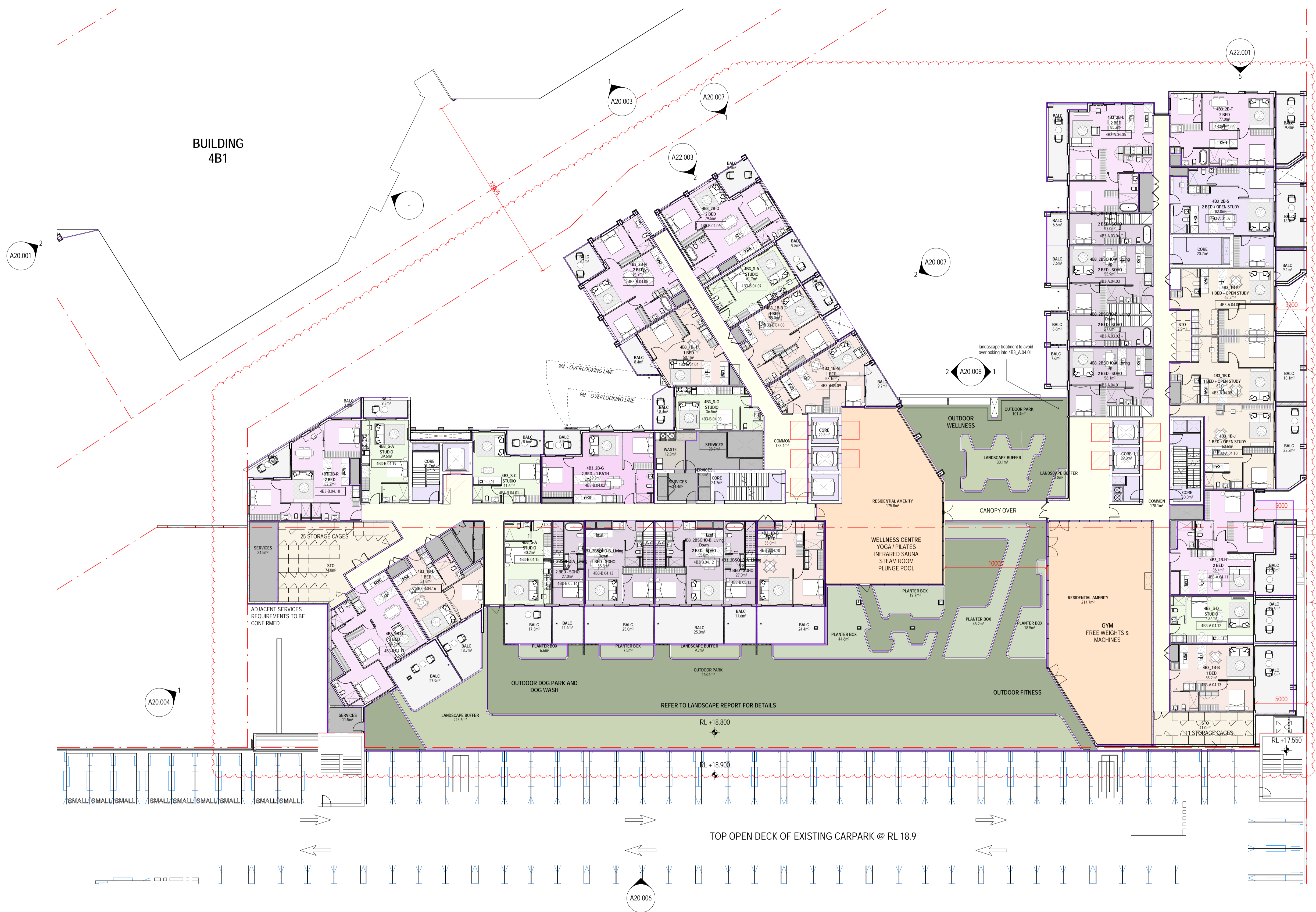
9860_District Living Residential Development

Drawing Title
4B3 - FLOOR PLAN - LEVEL 04

Drawing Status
TOWN PLANNING

Drawing Details
Scale 1 : 200 @ A1
Date 07.12.23
Job No 9860
Drawn Author
Checked Checker

Drawing No Revision
A10.006 (B)



BUILDING 4B1

A20.001

A20.003

A20.007

A22.003

A20.007

A20.008

A22.001

A90.001

A22.001

A20.004

A20.004

A20.006

TOP OPEN DECK OF EXISTING CARPARK @ RL 18.9

NH DEVELOPMENT ENVELOPE



BUILDING 4B1

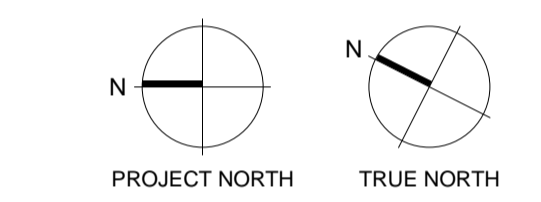
TOP OPEN DECK OF EXISTING CARPARK @ RL 18.9

A20.006

All dimension to be verified on site before producing shop drawings or commencing any work. Do not scale. The copyright of this drawing remains with Warren and Mahoney Australia Living Pty Ltd.

- Revisions**
- A 07.21.23 Town Planning Submission
 - B 07.12.23 Town Planning RFI

- Notes**
- *** Indicates privacy screen - Max 25% openings and minimum 1.7 high from FFL
 - **** Indicates fixed obscured glazing minimum 1.7m high from FFL
 - # Indicates full height angled shroud to avoid overlooking
 - Area calculations based on Method of Measurement: Residential from PCA.
 - Balconies on General arrangement floorplans measured to external face of the dominant portion of the balustrades. Refer to apartment types for Usable balcony areas clear of obstruction.



- Consultants**
- Armitage Jones
Project Manager
 - TTW
Structural Engineer
 - ARUP
Services Engineer
 - RED FIRE
Fire Engineer
 - ARCADIA
Landscape Architect
 - HIP V HYPE
ESD Engineer
- Client**
- AsheMorgan
 - Warren and Mahoney Living Australia Pty Ltd
- Level 3, 380 Collins Street
Melbourne VIC 3000
Australia
Phone + 61 3 8547 6977

Registered Architects and Designers
www.warrenandmahoney.com

Project Title

9860_District Living Residential Development

Drawing Title

4B3 - FLOOR PLAN - LEVEL 05

Drawing Status

TOWN PLANNING

Drawing Details

Scale 1 : 200 @ A1
Date 07.12.23
Job No 9860
Drawn Author
Checked Checker

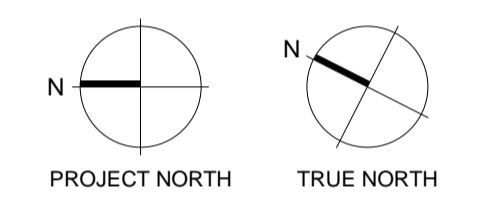
Drawing No A10.007
Revision B



All dimension to be verified on site before producing shop drawings or commencing any work. Do not scale. The copyright of this drawing remains with Warren and Mahoney Australia Living Pty Ltd.

- Revisions**
- A 07.21.23 Town Planning Submission
 - B 07.12.23 Town Planning RFI

- Notes**
- *** Indicates privacy screen - Max 25% openings and minimum 1.7 high from FFL
 - **** Indicates fixed obscured glazing minimum 1.7m high from FFL
 - # Indicates full height angled shroud to avoid overlooking
 - Area calculations based on Method of Measurement: Residential from PCA.
 - Balconies on General arrangement floorplans measured to external face of the dominant portion of the balustrades. Refer to apartment types for Usable balcony areas clear of obstruction.



- Consultants**
- Armitage Jones
Project Manager
 - TTW
Structural Engineer
 - ARUP
Services Engineer
 - RED FIRE
Fire Engineer
 - ARCADIA
Landscape Architect
 - HIP V HYPE
ESD Engineer
- Client**
- AsheMorgan
 - Warren and Mahoney Living Australia Pty Ltd
- Level 3, 380 Collins Street
Melbourne VIC 3000
Australia
Phone + 61 3 8547 6977

Registered Architects and Designers
www.warrenandmahoney.com

Project Title

9860_District Living Residential Development

Drawing Title

4B3 - FLOOR PLAN - LEVEL 06

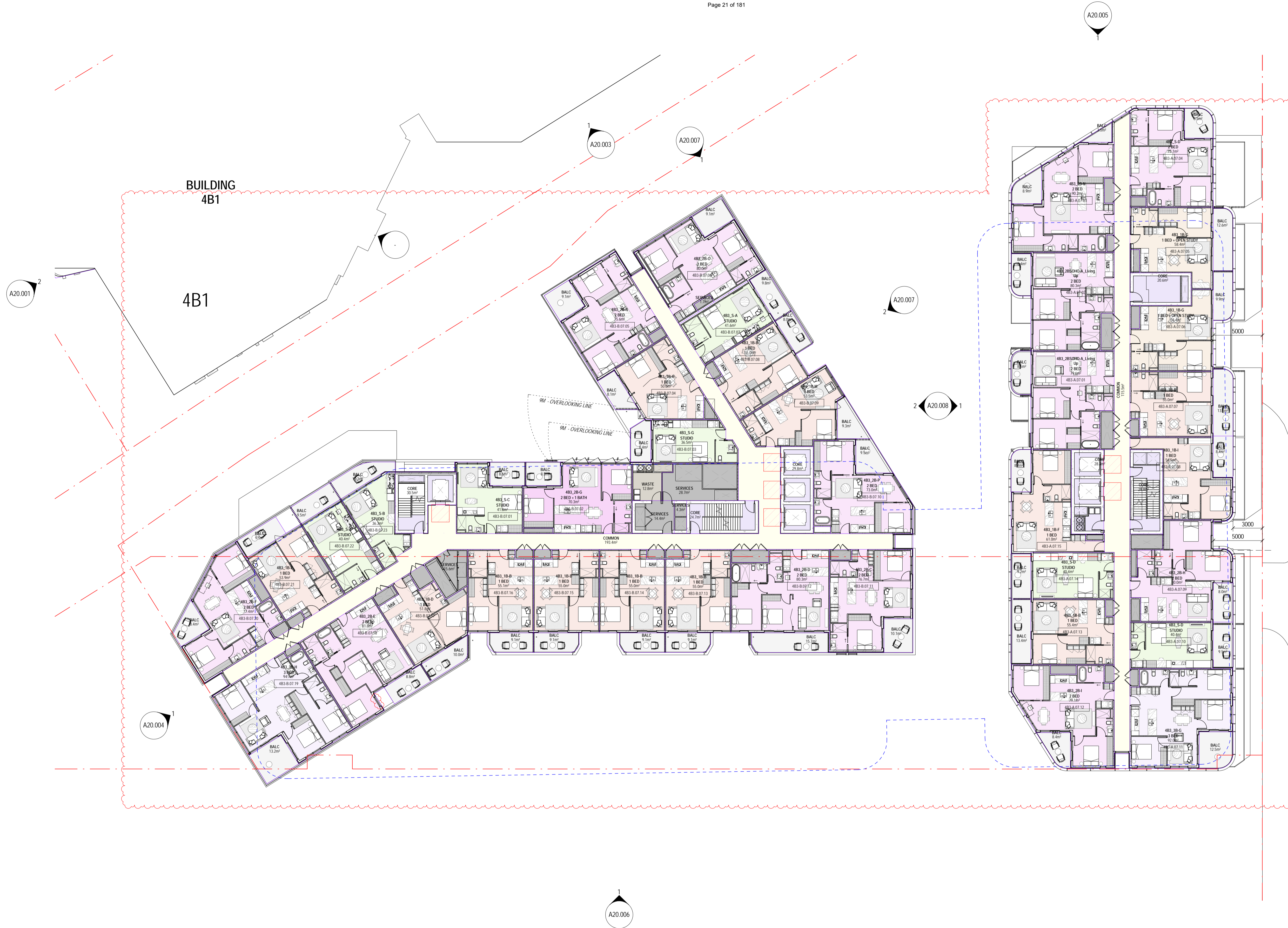
Drawing Status

TOWN PLANNING

Drawing Details

Scale 1 : 200 @ A1
Date 07.12.23
Job No 9860
Drawn Author
Checked Checker

Drawing No A10.008
Revision B

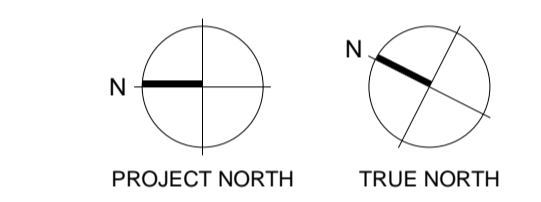


All dimension to be verified on site before producing shop drawings or commencing any work. Do not scale. The copyright of this drawing remains with Warren and Mahoney Australia Living Pty Ltd.

Revisions

A	07.21.23	Town Planning Submission
B	07.12.23	Town Planning RFI

- Notes**
- *** Indicates privacy screen - Max 25% openings and minimum 1.7 high from FFL
 - **** Indicates fixed obscured glazing minimum 1.7m high from FFL
 - # Indicates full height angled shroud to avoid overlooking
 - Area calculations based on Method of Measurement: Residential from PCA.
 - Balconies on General arrangement floorplans measured to external face of the dominant portion of the balustrades. Refer to apartment types for Usable balcony areas clear of obstruction.



- Consultants**
- Armitage Jones
Project Manager
 - TTW
Structural Engineer
 - ARUP
Services Engineer
 - RED FIRE
Fire Engineer
 - ARCADIA
Landscape Architect
 - HIP V HYPE
ESD Engineer
- Client**
- AsheMorgan
 - Warren and Mahoney Living Australia Pty Ltd
- Level 3, 380 Collins Street
Melbourne VIC 3000
Australia
Phone + 61 3 8547 6977

Registered Architects and Designers
www.warrenandmahoney.com

Project Title

9860_District Living Residential Development

Drawing Title

4B3 - FLOOR PLAN - LEVEL 07

Drawing Status

TOWN PLANNING

Drawing Details

Scale	1 : 200 @ A1
Date	07.12.23
Job No	9860
Drawn	Author
Checked	Checker

Drawing No	Revision
A10.009	(B)