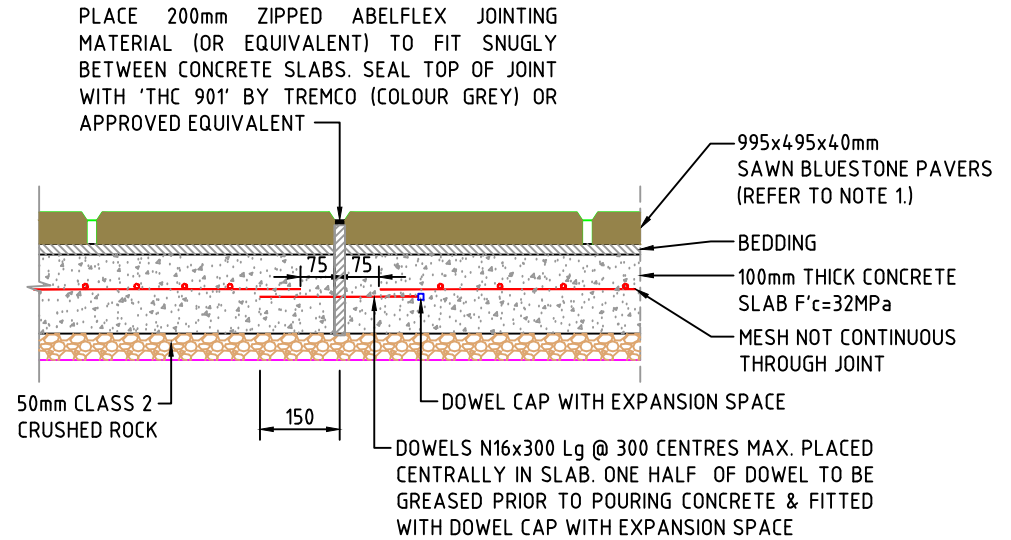


TYPICAL ISOLATION JOINT

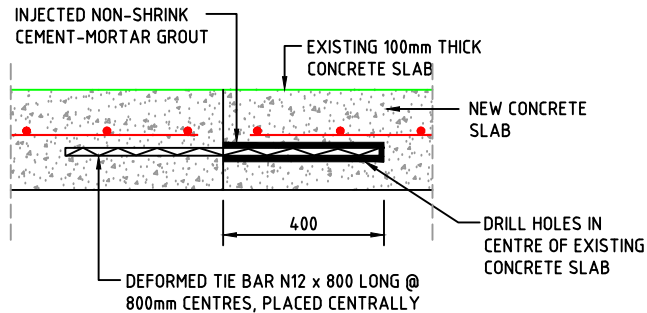
DETAIL 1  
BLUESTONE FOOTPATH CONSTRUCTION DETAILS



DETAIL 2

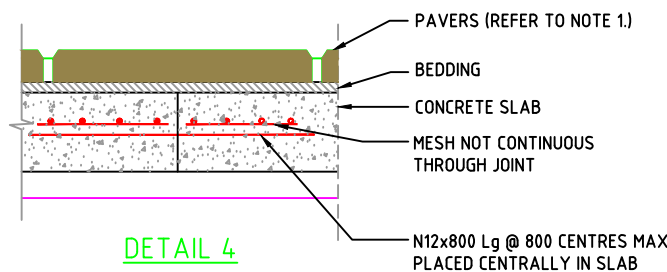
TYPICAL BLUESTONE FOOTPATH EXPANSION JOINT DETAIL

**NOTE 1.** WHERE THE LONGITUDINAL GRADIENT OF THE FOOTPATH EXCEEDS 1 IN 20 IN THE DIRECTION OF TRAVEL, GRIT BLASTED PAVERS SHALL BE ADOPTED FOR IMPROVED SLIP RESISTANCE.



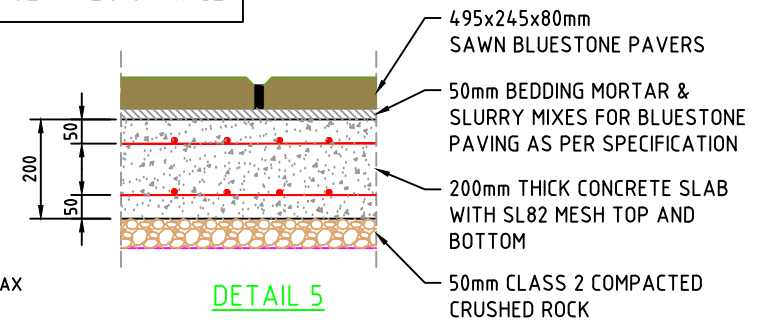
DETAIL 3

CONNECTION JOINT DETAIL IN BLUESTONE FOOTPATH



DETAIL 4

TYPICAL BLUESTONE FOOTPATH CONSTRUCTION JOINT DETAIL



DETAIL 5

TYPICAL ROAD/LANEWAY PAVING DETAIL

NOT TO SCALE



J	NOTE 1 ADDED	Aug, 20
I	DETAIL 5 - SIZE OF PAVERS	Oct, 14
Rev.	Revision Details	By Date

BLUESTONE PAVING CONSTRUCTION DETAILS

INFRASTRUCTURE AND ASSETS BRANCH

Approved By		Drawing Number	
Principal Engineer Infrastructure		1P 50402	
Director Infrastructure & Assets		Revision	
Date Aug, 2020		J	
Date Aug, 2020		Docs	