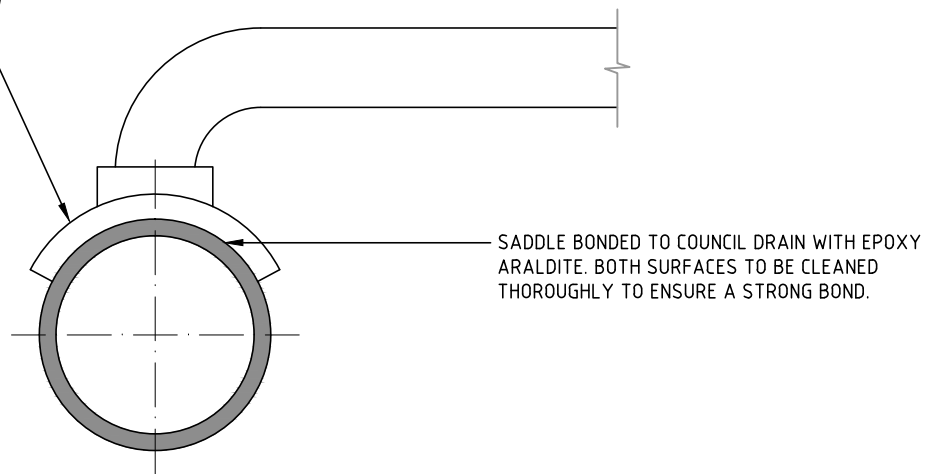
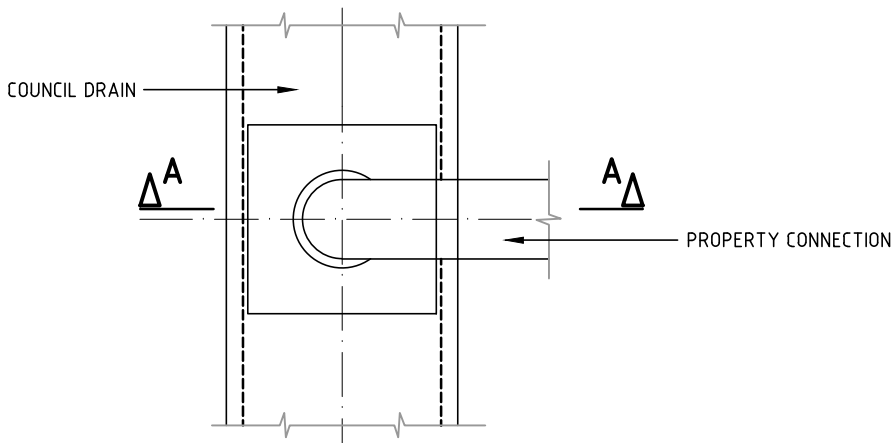


SECTION A-A

HUMES/ROCLA OR APPROVED EQUIVALENT SADDLE ADAPTOR



ELEVATION



PLAN

NOTES:

1. WHERE THE PROPERTY CONNECTION PIPE IS MORE THAN 1/3 THE DIAMETER OF THE COUNCIL DRAIN A STANDARD COUNCIL PIT SHALL BE CONSTRUCTED
2. ALL DRAIN CONNECTIONS SHALL BE AT RIGHT ANGLES TO THE STREET ALIGNMENT

NOT TO SCALE



ENGINEERING SERVICES BRANCH

SADDLE CONNECTION TO COUNCIL STORMWATER DRAIN

<i>Approved By</i>		<i>Drawing Number</i>	1P 50304
<i>Principal Engineer Infrastructure</i>	<i>Manager Engineering Services</i>	<i>Revision</i>	E
<i>Date</i> Nov, 2010	<i>Date</i> Nov, 2010	<i>Docs Number</i>	