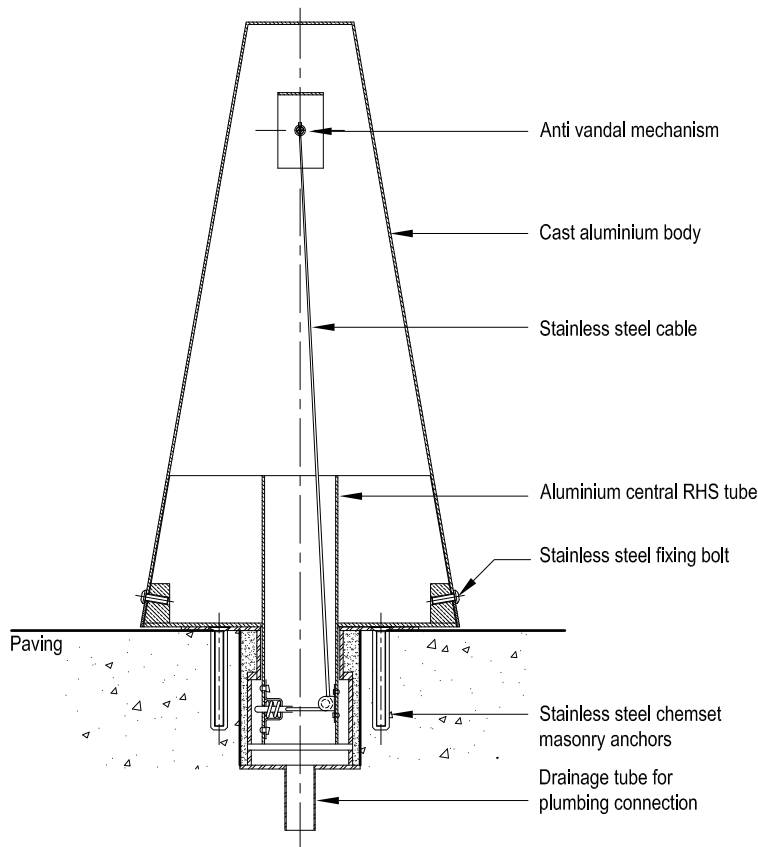
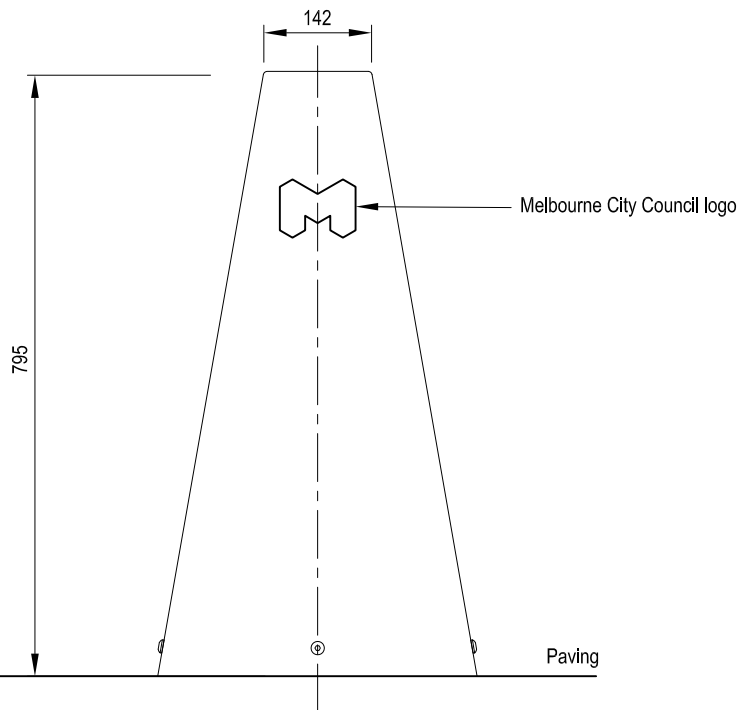


Plan



Section



Elevation



The Fin bollard - removable is used within the Central City and Docklands.

Fin bollards are to be placed at regular intervals. They are used to prevent vehicles entering pedestrian areas, to separate incompatible activities within a space and for the protection of properties.

The bollard has a galvanised mild steel core with an external cast aluminium casing. The casing is to be embossed with the City of Melbourne logo.

For fabrication & installation drawings, refer to City of Melbourne, City Design drawings; Project No: 901599 Removable Elliptical Bollard.