

LADY HUNTINGFIELD EARLY YEARS AND FAMILY SERVICES CENTRE REDEVELOPMENT

Construction bulletin 6

January to March 2020

Construction of the centre progressed steadily in the final quarter of 2019.

Due to space constraints on site the building is being constructed in two sections - the front of site and rear of site.

The rear of the site has progressed significantly with the completion of the concrete slabs, precast lift shaft and roof framing taking place in early December. Internal framing of walls, electrical, mechanical and hydraulic works have also progressed.

Works to the front of the site commenced in December with the construction of the sub-floor and structural reinforcement of the ground floor slab and columns.

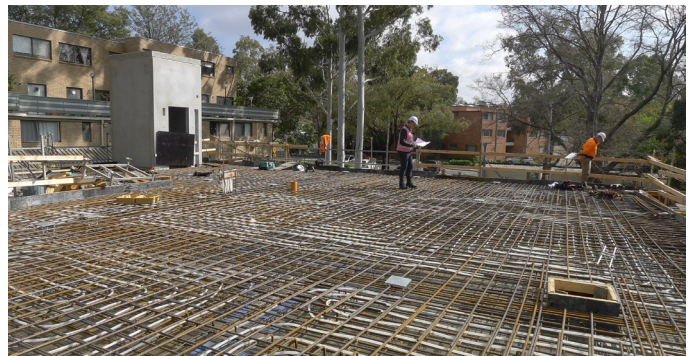
Planned works for the first quarter of 2020 include the completion of the base structure, continuation of the internal fit-out and commencement of external works.

Construction works

- Weekday works: 7am to 7pm
- Saturdays works: 8am to 3pm

Noise and equipment

- Some of these works will generate medium to high levels of noise. We will take measures to keep noise to a minimum, in particular from 7am to 9am.
- There will be frequent respite periods for noisy works, for example 15 minute breaks for every hour of jack hammering.
- Equipment to be used will include concrete trucks, excavators, saw cutters, forklifts and hand tools.
- Trucks with reversing alarms will enter and exit the site to deliver and remove equipment and materials.
- We will minimise dust by watering down the site and erecting shade cloth protection.



October 2019 - In-slab hydronic pipe installations (rear of site)



October 2019 - Pour level 1 slab (rear of site)



November 2019 - Level 1 column framing (rear of site)



November 2019 - Level 1 roof framing (rear of site)



Key dates for upcoming works

January to February 2020 – Concrete structure (front of site)

- installation of in-slab hydronic pipes
- ground floor slab pour
- installation of steel columns and walls
- preparation for Level 1 slab.

January to February 2020 – Roofing and wall framing (rear of site)

- installation of roofing
- external cladding
- internal wall framing to Level 1
- electrical and mechanical services installation.

February to March 2020 – Roofing and wall framing (front of site)

- Level 1 slab and concrete stair pour
- structural steel wall and roof framing on Level 1
- commencement of roofing and installation of solar panels
- external cladding and window installation.

March 2020 – Internal fit-out and external works

- continuation of internal wall framing
- continuation of external cladding and window installation
- continuation of services installation
- kitchen fit-out
- commencement of external decking.



December 2019 – Completion of sub-floor (front of site)



December 2019 – Completion of rock installation (front of site)



December 2019 – Sub-floor insulation and preparation for ground floor slab (front of site)