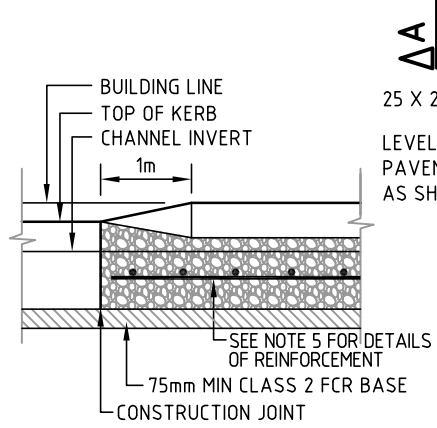
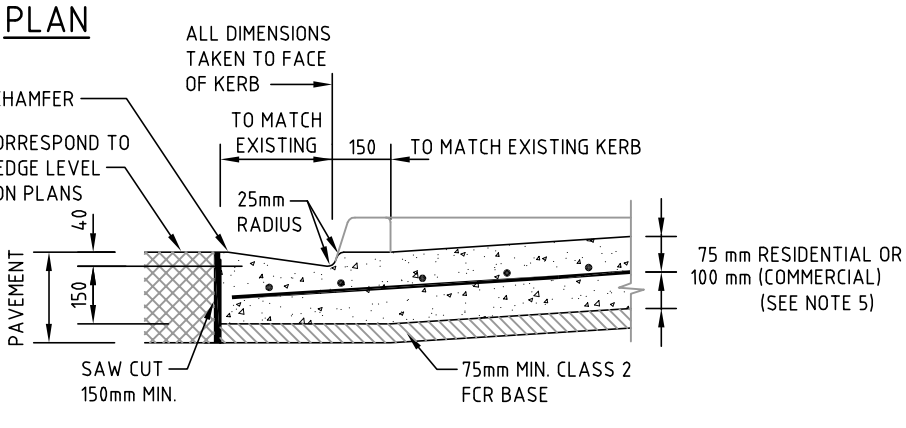


**PLAN**



**SECTION B - B**



**SECTION A - A**

PRIVATE SINGLE RESIDENCE MIN. WIDTH 2.75 m MAX. WIDTH 7.60 m  
 OTHER LAND USES MIN. WIDTH 3.00 m MAX. WIDTH 7.60 m

**GENERAL NOTES:**

1. A PEDESTRIAN 'CORRIDOR' OF MINIMUM 2/3 FOOTPATH WIDTH OR 1200mm (WHICHEVER IS THE GREATER) SHALL REMAIN AT EXISTING FOOTPATH GRADE. A STRAIGHT GRADE BETWEEN THE LOWERED KERB AND EXISTING BUILDING LINE LEVELS MAY BE PERMITTED FOR FOOTPATHS LESS THAN 1.8m.
2. MINIMUM DISTANCE FROM BOUNDARY 1.00m UNLESS WRITTEN CONSENT OBTAINED FROM ADJOINING OWNER.
3. EXCAVATE TO NECESSARY DEPTHS AND GRADES AND COMPACT BASE TO 95% RELATIVE COMPACTION. ANY SOFT, WET OR OTHERWISE UNSTABLE SUB-GRADE MATERIAL SHALL BE REMOVED AND REPLACED WITH COMPACTED CRUSHED ROCK.
4. LAY AND COMPACT 75mm CRUSHED ROCK BASE (20mm NOMINAL, CLASS 2) COMPACTED TO 95% MODIFIED COMPACTION.
5. FOR RESIDENTIAL USE THE SLAB THICKNESS SHALL BE 150mm MINIMUM DEPTH REINFORCED CONCRETE, USING REINFORCEMENT TO AS4671, WITH SL82 MESH PLACED CENTRALLY.  
 FOR ALL OTHER USES THE SLAB THICKNESS AND REINFORCEMENT SHALL BE DESIGNED TO TAKE INTO ACCOUNT THE TYPE OF VEHICLE USING THE CROSSING. REINFORCEMENT SHALL BE TO AS4671, CONCRETE TO AS3600-2001.
6. FOR CROSSING GREATER THAN 5m IN WIDTH, DISHING 600mm FROM SIDE EDGES IS PERMITTED TO ALLOW GRADING FROM BUILDING LINE TO LOWERED KERB OR OTHERWISE AS DIRECTED.
7. DUE TO THE PRESENCE OF UNDERGROUND CABLES AND SERVICES, CARE MUST BE TAKEN WHEN EXCAVATING. ANY SERVICES DAMAGED SHALL BE IMMEDIATELY REPORTED TO THE RELEVANT AUTHORITY FOR THE NECESSARY REPAIRS. DETAILS OF UNDERGROUND SERVICES SHALL BE OBTAINED FROM MELBOURNE ONE CALL TEL. 1100. (DIAL BEFORE YOU DIG).
8. LEVELS TO MATCH EXISTING UNLESS OTHERWISE APPROVED.
9. SLABS BETWEEN "V" JOINTS TO BE GENERALLY SQUARE WITH JOINT SPACING NOT TO EXCEED 3.8m.

**NOT TO SCALE**

**ENGINEERING SERVICES BRANCH**



**CONCRETE CROSSING  
 CAST IN SITU  
 CONCRETE KERB**

Approved By		Drawing Number	1P 50106
Principal Engineer Infrastructure	Manager Engineering Services	Revision	E
Date Nov, 2010	Date Nov, 2010	Docs Number	